



[Go to Product page](#)

Datasheet for ABIN7127569

Recombinant anti-IL23A antibody

1 Image

Overview

Quantity:	100 µL
Target:	IL23A
Reactivity:	Human
Host:	Rabbit
Antibody Type:	Recombinant Antibody
Clonality:	Monoclonal
Conjugate:	This IL23A antibody is un-conjugated
Application:	Western Blotting (WB), ELISA

Product Details

Immunogen:	A synthesized peptide derived from human IL23
Clone:	1F6
Isotype:	IgG
Cross-Reactivity:	Human
Purification:	Affinity-chromatography

Target Details

Target:	IL23A
Alternative Name:	IL23A (IL23A Products)
Background:	Background: Associates with IL12B to form the IL-23 interleukin, a heterodimeric cytokine

Target Details

which functions in innate and adaptive immunity. IL-23 may constitute with IL-17 an acute response to infection in peripheral tissues. IL-23 binds to a heterodimeric receptor complex composed of IL12RB1 and IL23R, activates the Jak-Stat signaling cascade, stimulates memory rather than naive T-cells and promotes production of proinflammatory cytokines. IL-23 induces autoimmune inflammation and thus may be responsible for autoimmune inflammatory diseases and may be important for tumorigenesis.

Aliases: Interleukin-23 subunit alpha (IL-23 subunit alpha) (IL-23-A) (Interleukin-23 subunit p19) (IL-23p19), IL23A, SGRF

UniProt: [Q9NPF7](#)

Pathways: [Regulation of Leukocyte Mediated Immunity](#), [Positive Regulation of Immune Effector Process](#), [Activated T Cell Proliferation](#)

Application Details

Application Notes: Recommended dilution: WB:1:500-1:5000,

Restrictions: For Research Use only

Handling

Format: Liquid

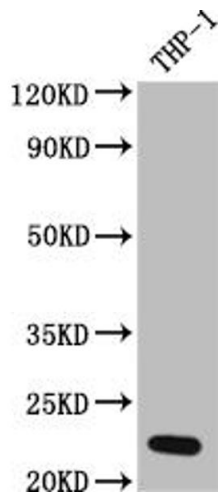
Buffer: Rabbit IgG in phosphate buffered saline, pH 7.4, 150 mM NaCl, 0.02 % sodium azide and 50 % glycerol.

Preservative: Sodium azide

Precaution of Use: This product contains Sodium azide: a POISONOUS AND HAZARDOUS SUBSTANCE which should be handled by trained staff only.

Storage: -20 °C,-80 °C

Storage Comment: Upon receipt, store at -20°C or -80°C. Avoid repeated freeze.



Western Blotting

Image 1. Western Blot Positive WB detected in: THP-1 whole cell lysate All lanes: IL23 antibody at 1:1000 Secondary Goat polyclonal to rabbit IgG at 1/50000 dilution Predicted band size: 21 kDa Observed band size: 21 kDa