

Datasheet for ABIN7127579

**Recombinant anti-CXCL1 antibody**[Go to Product page](#)**1** Image

## Overview

Quantity:	100 µL
Target:	CXCL1
Reactivity:	Human
Host:	Rabbit
Antibody Type:	Recombinant Antibody
Clonality:	Monoclonal
Conjugate:	This CXCL1 antibody is un-conjugated
Application:	ELISA, Immunohistochemistry (IHC)

## Product Details

Immunogen:	A synthesized peptide derived from human IP10
Clone:	5C7
Isotype:	IgG
Cross-Reactivity:	Human
Purification:	Affinity-chromatography

## Target Details

Target:	CXCL1
Alternative Name:	CXCL1 ( <a href="#">CXCL1 Products</a> )
Background:	Background: Chemotactic for monocytes and T-lymphocytes. Binds to CXCR3.

## Target Details

Aliases: C-X-C motif chemokine 10 (10 kDa interferon gamma-induced protein) (Gamma-IP10) (IP-10) (Small-inducible cytokine B10) [Cleaved into: CXCL10(1-73)], CXCL10, INP10 SCYB10

UniProt: [P02778](#)

Pathways: [Autophagy](#)

## Application Details

Application Notes: Recommended dilution: IHC:1:50-1:200,

Restrictions: For Research Use only

## Handling

Format: Liquid

Buffer: Rabbit IgG in phosphate buffered saline, pH 7.4, 150 mM NaCl, 0.02 % sodium azide and 50 % glycerol.

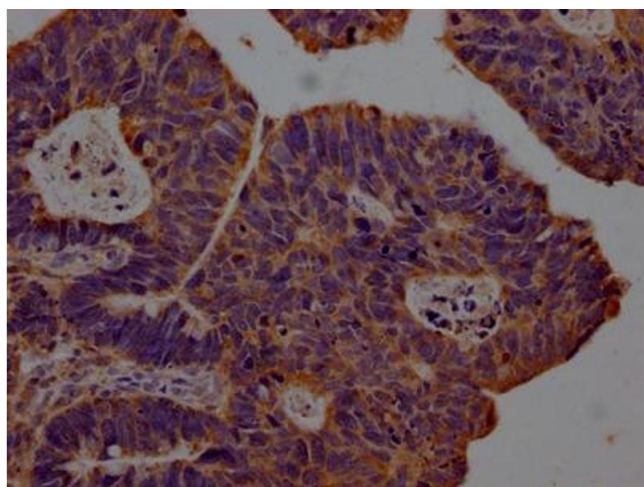
Preservative: Sodium azide

Precaution of Use: This product contains Sodium azide: a POISONOUS AND HAZARDOUS SUBSTANCE which should be handled by trained staff only.

Storage: -20 °C, -80 °C

Storage Comment: Upon receipt, store at -20°C or -80°C. Avoid repeated freeze.

## Images



### Immunohistochemistry

**Image 1.** IHC image of ABIN7127579 diluted at 1:100 and staining in paraffin-embedded human ovarian cancer performed on a Leica Bond™ system. After dewaxing and hydration, antigen retrieval was mediated by high pressure in a citrate buffer (pH 6.0). Section was blocked with 10 % normal goat serum 30 min at RT. Then primary antibody (1 % BSA) was incubated at 4 °C overnight. The primary is detected by a Goat anti-rabbit IgG polymer labeled by HRP and visualized using 0.05 % DAB.