

Datasheet for ABIN7127585

## Recombinant anti-ITK antibody



[Go to Product page](#)

### 1 Image

#### Overview

Quantity:	100 µL
Target:	ITK
Reactivity:	Human
Host:	Rabbit
Antibody Type:	Recombinant Antibody
Clonality:	Monoclonal
Conjugate:	This ITK antibody is un-conjugated
Application:	ELISA, Immunohistochemistry (IHC)

#### Product Details

Immunogen:	A synthesized peptide derived from human ITK
Clone:	8F10
Isotype:	IgG
Cross-Reactivity:	Human
Purification:	Affinity-chromatography

#### Target Details

Target:	ITK
Alternative Name:	ITK ( <a href="#">ITK Products</a> )
Background:	Background: Tyrosine kinase that plays an essential role in regulation of the adaptive immune

## Target Details

---

response. Regulates the development, function and differentiation of conventional T-cells and nonconventional NKT-cells. When antigen presenting cells (APC) activate T-cell receptor (TCR), a series of phosphorylation lead to the recruitment of ITK to the cell membrane, in the vicinity of the stimulated TCR receptor, where it is phosphorylated by LCK. Phosphorylation leads to ITK autophosphorylation and full activation. Once activated, phosphorylates PLCG1, leading to the activation of this lipase and subsequent cleavage of its substrates. In turn, the endoplasmic reticulum releases calcium in the cytoplasm and the nuclear activator of activated T-cells (NFAT) translocates into the nucleus to perform its transcriptional duty. Phosphorylates 2 essential adapter proteins: the linker for activation of T-cells/LAT protein and LCP2. Then, a large number of signaling molecules such as VAV1 are recruited and ultimately lead to lymphokine production, T-cell proliferation and differentiation.

Aliases: Tyrosine-protein kinase ITK/TSK (EC 2.7.10.2) (Interleukin-2-inducible T-cell kinase) (IL-2-inducible T-cell kinase) (Kinase EMT) (T-cell-specific kinase) (Tyrosine-protein kinase Lyk), ITK, EMT LYK

---

UniProt: [Q08881](#)

---

Pathways: [TCR Signaling](#), [Fc-epsilon Receptor Signaling Pathway](#)

## Application Details

---

Application Notes: Recommended dilution: IHC:1:50-1:200,

---

Restrictions: For Research Use only

## Handling

---

Format: Liquid

---

Buffer: Rabbit IgG in phosphate buffered saline, pH 7.4, 150 mM NaCl, 0.02 % sodium azide and 50 % glycerol.

---

Preservative: Sodium azide

---

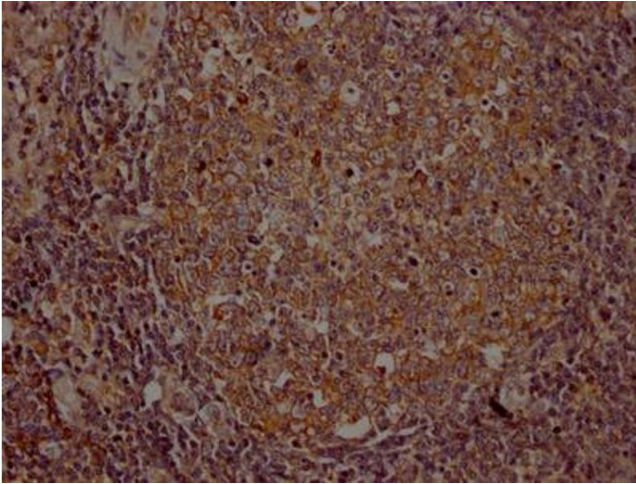
Precaution of Use: This product contains Sodium azide: a POISONOUS AND HAZARDOUS SUBSTANCE which should be handled by trained staff only.

---

Storage: -20 °C,-80 °C

---

Storage Comment: Upon receipt, store at -20°C or -80°C. Avoid repeated freeze.



### Immunohistochemistry

**Image 1.** IHC image of ABIN7127585 diluted at 1:100 and staining in paraffin-embedded human lymph node tissue performed on a Leica Bond™ system. After dewaxing and hydration, antigen retrieval was mediated by high pressure in a citrate buffer (pH 6.0). Section was blocked with 10 % normal goat serum 30 min at RT. Then primary antibody (1 % BSA) was incubated at 4 °C overnight. The primary is detected by a Goat anti-rabbit IgG polymer labeled by HRP and visualized using 0.05 % DAB.