



Datasheet for ABIN7127586

## Recombinant anti-JAK1 antibody



[Go to Product page](#)

### 1 Image

#### Overview

Quantity:	100 µL
Target:	JAK1
Reactivity:	Human
Host:	Rabbit
Antibody Type:	Recombinant Antibody
Clonality:	Monoclonal
Conjugate:	This JAK1 antibody is un-conjugated
Application:	Immunohistochemistry (IHC), ELISA

#### Product Details

Immunogen:	A synthesized peptide derived from human JAK1
Clone:	7A5
Isotype:	IgG
Cross-Reactivity:	Human
Purification:	Affinity-chromatography

#### Target Details

Target:	JAK1
Alternative Name:	JAK1 ( <a href="#">JAK1 Products</a> )
Background:	Background: Tyrosine kinase of the non-receptor type, involved in the IFN-alpha/beta/gamma

## Target Details

---

signal pathway (PubMed:7615558). Kinase partner for the interleukin (IL)-2 receptor (PubMed:11909529).

Aliases: Tyrosine-protein kinase JAK1 (EC 2.7.10.2) (Janus kinase 1) (JAK-1), JAK1, JAK1A, JAK1B

---

UniProt: [P23458](#)

---

Pathways: [JAK-STAT Signaling](#), [RTK Signaling](#), [Interferon-gamma Pathway](#), [Hepatitis C](#), [Toll-Like Receptors Cascades](#), [Unfolded Protein Response](#)

## Application Details

---

Application Notes: Recommended dilution: IHC:1:50-1:200,

---

Restrictions: For Research Use only

## Handling

---

Format: Liquid

---

Buffer: Rabbit IgG in phosphate buffered saline, pH 7.4, 150 mM NaCl, 0.02 % sodium azide and 50 % glycerol.

---

Preservative: Sodium azide

---

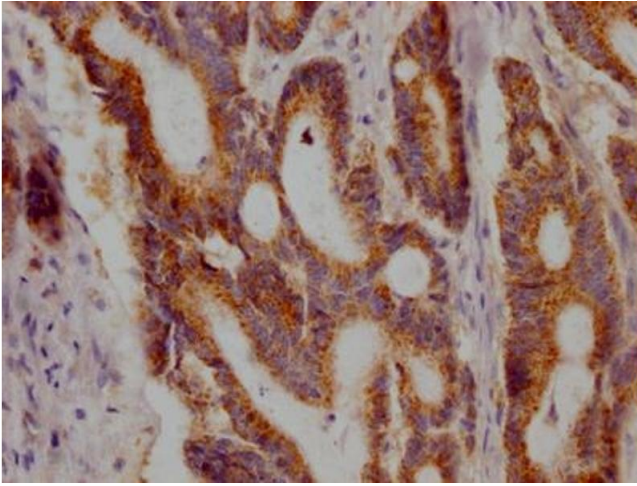
Precaution of Use: This product contains Sodium azide: a POISONOUS AND HAZARDOUS SUBSTANCE which should be handled by trained staff only.

---

Storage: -20 °C, -80 °C

---

Storage Comment: Upon receipt, store at -20°C or -80°C. Avoid repeated freeze.



### Immunohistochemistry

**Image 1.** IHC image of ABIN7127586 diluted at 1:100 and staining in paraffin-embedded human colon cancer performed on a Leica Bond™ system. After dewaxing and hydration, antigen retrieval was mediated by high pressure in a citrate buffer (pH 6.0). Section was blocked with 10 % normal goat serum 30 min at RT. Then primary antibody (1 % BSA) was incubated at 4 °C overnight. The primary is detected by a Goat anti-rabbit IgG polymer labeled by HRP and visualized using 0.05 % DAB.