

Datasheet for ABIN7127591

Recombinant anti-KLF4 antibody**5** Images[Go to Product page](#)

Overview

Quantity:	100 µL
Target:	KLF4
Reactivity:	Human
Host:	Rabbit
Antibody Type:	Recombinant Antibody
Clonality:	Monoclonal
Conjugate:	This KLF4 antibody is un-conjugated
Application:	Western Blotting (WB), ELISA, Immunofluorescence (IF), Immunohistochemistry (IHC), Immunoprecipitation (IP)

Product Details

Immunogen:	A synthesized peptide derived from human KLF4
Clone:	3A1
Isotype:	IgG
Cross-Reactivity:	Human
Purification:	Affinity-chromatography

Target Details

Target:	KLF4
Alternative Name:	KLF4 (KLF4 Products)

Target Details

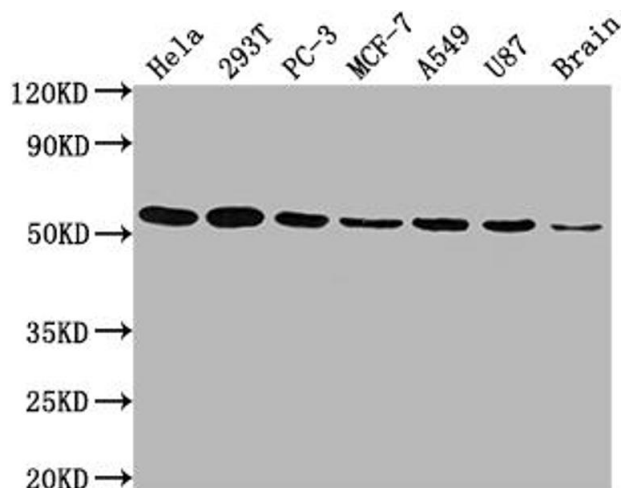
Background:	<p>Background: Transcription factor, can act both as activator and as repressor. Binds the 5'-CACCC-3' core sequence. Binds to the promoter region of its own gene and can activate its own transcription. Regulates the expression of key transcription factors during embryonic development. Plays an important role in maintaining embryonic stem cells, and in preventing their differentiation. Required for establishing the barrier function of the skin and for postnatal maturation and maintenance of the ocular surface. Involved in the differentiation of epithelial cells and may also function in skeletal and kidney development. Contributes to the down-regulation of p53/TP53 transcription.</p> <p>Aliases: Krueppel-like factor 4 (Epithelial zinc finger protein EZF) (Gut-enriched krueppel-like factor), KLF4, EZF, GKLf</p>
UniProt:	O43474
Pathways:	Peptide Hormone Metabolism , Stem Cell Maintenance

Application Details

Application Notes:	Recommended dilution: WB:1:500-1:5000, IHC:1:50-1:200, IF:1:20-1:200, IP:1:200-1:1000,
Restrictions:	For Research Use only

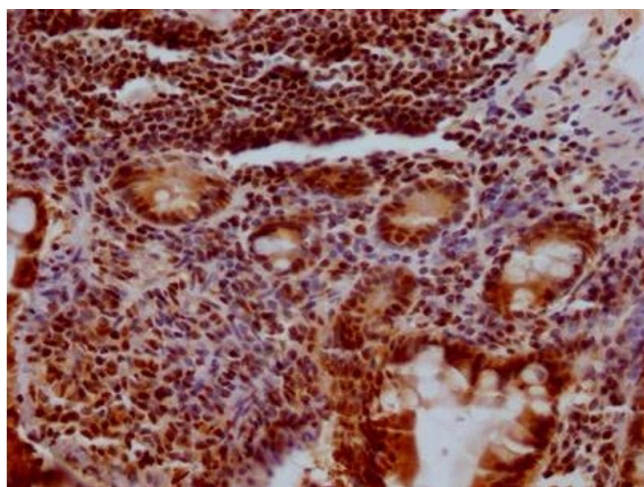
Handling

Format:	Liquid
Buffer:	Rabbit IgG in phosphate buffered saline, pH 7.4, 150 mM NaCl, 0.02 % sodium azide and 50 % glycerol.
Preservative:	Sodium azide
Precaution of Use:	This product contains Sodium azide: a POISONOUS AND HAZARDOUS SUBSTANCE which should be handled by trained staff only.
Storage:	-20 °C,-80 °C
Storage Comment:	Upon receipt, store at -20°C or -80°C. Avoid repeated freeze.



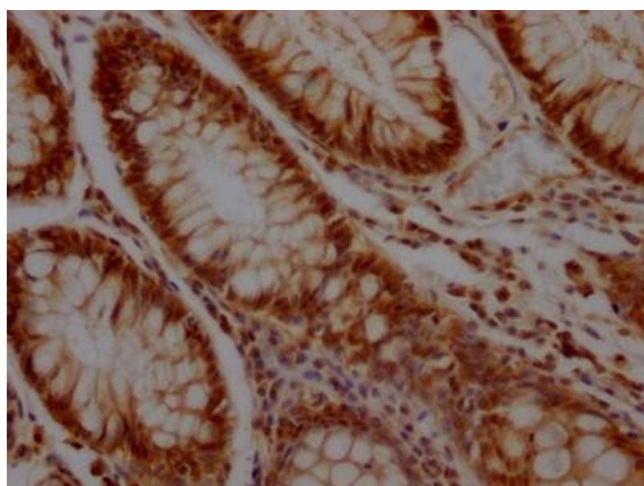
Western Blotting

Image 1. Western Blot Positive WB detected in: HeLa whole cell lysate, 293T whole cell lysate, PC-3 whole cell lysate, MCF-7 whole cell lysate, A549 whole cell lysate, U87 whole cell lysate, Brain tissue All lanes: KLF4 antibody at 1:1500 Secondary Goat polyclonal to rabbit IgG at 1/50000 dilution Predicted band size: 55, 52, 46, 13, 7 kDa Observed band size: 55 kDa



Immunohistochemistry

Image 2. IHC image of ABIN7127591 diluted at 1:100 and staining in paraffin-embedded human small intestine tissue performed on a Leica Bond™ system. After dewaxing and hydration, antigen retrieval was mediated by high pressure in a citrate buffer (pH 6.0). Section was blocked with 10 % normal goat serum 30 min at RT. Then primary antibody (1 % BSA) was incubated at 4 °C overnight. The primary is detected by a Goat anti-rabbit IgG polymer labeled by HRP and visualized using 0.05 % DAB.



Immunohistochemistry

Image 3. IHC image of ABIN7127591 diluted at 1:100 and staining in paraffin-embedded human colon cancer tissue performed on a Leica Bond™ system. After dewaxing and hydration, antigen retrieval was mediated by high pressure in a citrate buffer (pH 6.0). Section was blocked with 10 % normal goat serum 30 min at RT. Then primary antibody (1 % BSA) was incubated at 4 °C overnight. The primary is detected by a Goat anti-rabbit IgG polymer labeled by HRP and visualized using 0.05 % DAB.

Please check the [product details page](#) for more images. Overall 5 images are available for ABIN7127591.