

Datasheet for ABIN7127592

Recombinant anti-KLKB1 antibody[Go to Product page](#)**1** Image

Overview

Quantity:	100 µL
Target:	KLKB1
Reactivity:	Human
Host:	Rabbit
Antibody Type:	Recombinant Antibody
Clonality:	Monoclonal
Conjugate:	This KLKB1 antibody is un-conjugated
Application:	ELISA, Immunohistochemistry (IHC)

Product Details

Immunogen:	A synthesized peptide derived from human KLKB1
Clone:	9F6
Isotype:	IgG
Cross-Reactivity:	Human
Purification:	Affinity-chromatography

Target Details

Target:	KLKB1
Alternative Name:	KLKB1 (KLKB1 Products)
Background:	Background: The enzyme cleaves Lys-Arg and Arg-Ser bonds. It activates, in a reciprocal

Target Details

reaction, factor XII after its binding to a negatively charged surface. It also releases bradykinin from HMW kininogen and may also play a role in the renin-angiotensin system by converting prorenin into renin.

Aliases: Plasma kallikrein (EC 3.4.21.34) (Fletcher factor) (Kininogenin) (Plasma prekallikrein) (PKK) [Cleaved into: Plasma kallikrein heavy chain, Plasma kallikrein light chain], KLKB1, KLK3

UniProt: [P03952](#)

Pathways: [Complement System](#), [Brown Fat Cell Differentiation](#)

Application Details

Application Notes: Recommended dilution: IHC:1:50-1:200,

Restrictions: For Research Use only

Handling

Format: Liquid

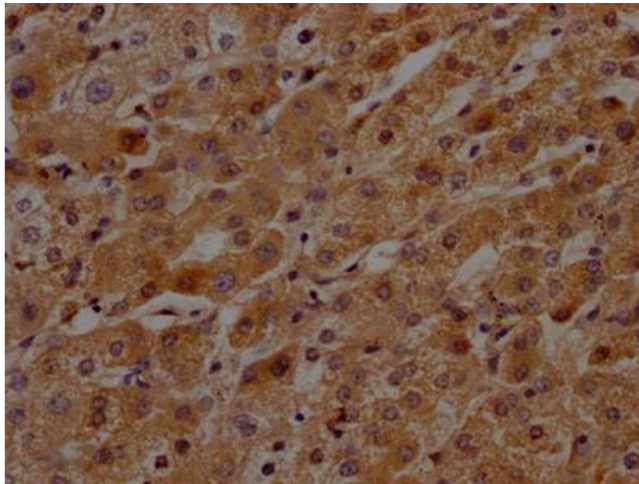
Buffer: Rabbit IgG in phosphate buffered saline, pH 7.4, 150 mM NaCl, 0.02 % sodium azide and 50 % glycerol.

Preservative: Sodium azide

Precaution of Use: This product contains Sodium azide: a POISONOUS AND HAZARDOUS SUBSTANCE which should be handled by trained staff only.

Storage: -20 °C, -80 °C

Storage Comment: Upon receipt, store at -20°C or -80°C. Avoid repeated freeze.



Immunohistochemistry

Image 1. IHC image of ABIN7127592 diluted at 1:100 and staining in paraffin-embedded human liver tissue performed on a Leica Bond™ system. After dewaxing and hydration, antigen retrieval was mediated by high pressure in a citrate buffer (pH 6.0). Section was blocked with 10 % normal goat serum 30 min at RT. Then primary antibody (1 % BSA) was incubated at 4 °C overnight. The primary is detected by a Goat anti-rabbit IgG polymer labeled by HRP and visualized using 0.05 % DAB.