

Datasheet for ABIN7127600

Recombinant anti-LGR5 antibody**2** Images[Go to Product page](#)

Overview

Quantity:	100 µL
Target:	LGR5
Reactivity:	Human
Host:	Rabbit
Antibody Type:	Recombinant Antibody
Clonality:	Monoclonal
Conjugate:	This LGR5 antibody is un-conjugated
Application:	Western Blotting (WB), Flow Cytometry (FACS), ELISA

Product Details

Immunogen:	A synthesized peptide derived from human LGR5/GPR49
Clone:	4H8
Isotype:	IgG
Cross-Reactivity:	Human, Rat
Purification:	Affinity-chromatography

Target Details

Target:	LGR5
Alternative Name:	LGR5 (LGR5 Products)
Background:	Background: Receptor for R-spondins that potentiates the canonical Wnt signaling pathway and

Target Details

acts as a stem cell marker of the intestinal epithelium and the hair follicle. Upon binding to R-spondins (RSP01, RSP02, RSP03 or RSP04), associates with phosphorylated LRP6 and frizzled receptors that are activated by extracellular Wnt receptors, triggering the canonical Wnt signaling pathway to increase expression of target genes. In contrast to classical G-protein coupled receptors, does not activate heterotrimeric G-proteins to transduce the signal. Involved in the development and/or maintenance of the adult intestinal stem cells during postembryonic development.

Aliases: Leucine-rich repeat-containing G-protein coupled receptor 5 (G-protein coupled receptor 49) (G-protein coupled receptor 67) (G-protein coupled receptor HG38), LGR5, GPR49 GPR67

UniProt: [075473](#)

Pathways: [WNT Signaling](#)

Application Details

Application Notes: Recommended dilution: WB:1:500-1:5000, FC:1:20-1:200,

Restrictions: For Research Use only

Handling

Format: Liquid

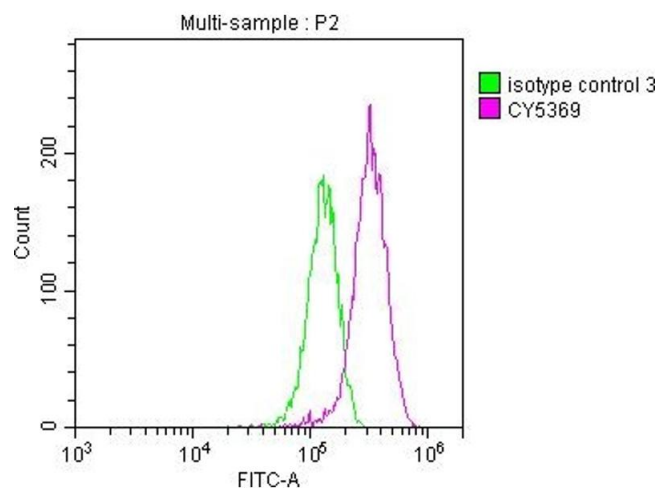
Buffer: Rabbit IgG in phosphate buffered saline, pH 7.4, 150 mM NaCl, 0.02 % sodium azide and 50 % glycerol.

Preservative: Sodium azide

Precaution of Use: This product contains Sodium azide: a POISONOUS AND HAZARDOUS SUBSTANCE which should be handled by trained staff only.

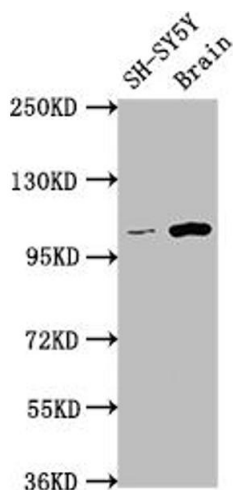
Storage: -20 °C,-80 °C

Storage Comment: Upon receipt, store at -20°C or -80°C. Avoid repeated freeze.



Flow Cytometry

Image 1. Overlay histogram showing HepG2 cells stained with ABIN7127600 (red line) at 1:50. The cells were incubated in 10 % normal goat serum to block non-specific protein-protein interactions followed by the antibody (1 μ g/1*10⁶cells) for 1 h at 4 °C. The secondary antibody used was FITC-conjugated goat anti-rabbit IgG (H+L) at 1/200 dilution for 30 min at 4 °C. Control antibody (green line) was Rabbit IgG (1 μ g/1*10⁶cells) used under the same conditions. Acquisition of >10,000 events was performed.



Western Blotting

Image 2. Western Blot Positive WB detected in: SH-SY5Y whole cell lysate, Rat brain tissue All lanes: LGR5 antibody at 1:1500 Secondary Goat polyclonal to rabbit IgG at 1/50000 dilution Predicted band size: 100, 98, 93 kDa Observed band size: 100 kDa