

Datasheet for ABIN7127603

**Recombinant anti-LRG1 antibody**[Go to Product page](#)**2** Images

## Overview

Quantity:	100 µL
Target:	LRG1
Reactivity:	Human
Host:	Rabbit
Antibody Type:	Recombinant Antibody
Clonality:	Monoclonal
Conjugate:	This LRG1 antibody is un-conjugated
Application:	Western Blotting (WB), Immunohistochemistry (IHC), ELISA

## Product Details

Immunogen:	A synthesized peptide derived from human LRG1
Clone:	7A1
Isotype:	IgG
Cross-Reactivity:	Human
Purification:	Affinity-chromatography

## Target Details

Target:	LRG1
Alternative Name:	LRG1 ( <a href="#">LRG1 Products</a> )
Background:	Background: extracellular exosome, extracellular region, extracellular space, ficolin-1-rich

## Target Details

granule lumen, intracellular membrane-bounded organelle, membrane, specific granule lumen, tertiary granule lumen, neutrophil degranulation

Aliases: Leucine-rich alpha-2-glycoprotein (LRG), LRG1, LRG

UniProt: [P02750](#)

Pathways: [Brown Fat Cell Differentiation](#)

## Application Details

Application Notes: Recommended dilution: WB:1:500-1:5000, IHC:1:50-1:200,

Restrictions: For Research Use only

## Handling

Format: Liquid

Buffer: Rabbit IgG in phosphate buffered saline, pH 7.4, 150 mM NaCl, 0.02 % sodium azide and 50 % glycerol.

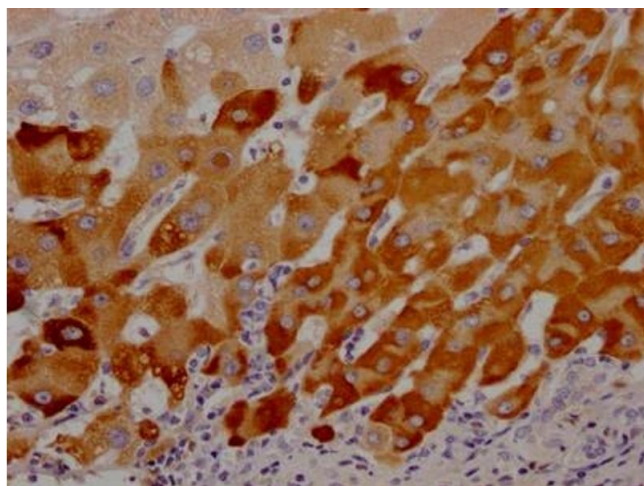
Preservative: Sodium azide

Precaution of Use: This product contains Sodium azide: a POISONOUS AND HAZARDOUS SUBSTANCE which should be handled by trained staff only.

Storage: -20 °C,-80 °C

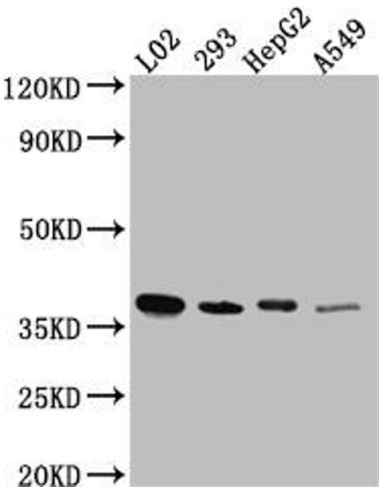
Storage Comment: Upon receipt, store at -20°C or -80°C. Avoid repeated freeze.

## Images



### Immunohistochemistry

**Image 1.** IHC image of ABIN7127603 diluted at 1:100 and staining in paraffin-embedded human liver cancer performed on a Leica Bond™ system. After dewaxing and hydration, antigen retrieval was mediated by high pressure in a citrate buffer (pH 6.0). Section was blocked with 10 % normal goat serum 30 min at RT. Then primary antibody (1 % BSA) was incubated at 4 °C overnight. The primary is detected by a Goat anti-rabbit IgG polymer labeled by HRP and visualized using 0.05 % DAB.



Western Blotting

**Image 2.** Western Blot Positive WB detected in: L02 whole cell lysate, HEK293 whole cell lysate, HepG2 whole cell lysate, A549 whole cell lysate All lanes: LRG1 antibody at 1:1000 Secondary Goat polyclonal to rabbit IgG at 1/50000 dilution Predicted band size: 39 kDa Observed band size: 39 kDa