

Datasheet for ABIN7127614

Recombinant anti-Menin antibody[Go to Product page](#)**1** Image

Overview

Quantity:	100 µL
Target:	Menin (MEN1)
Reactivity:	Human
Host:	Rabbit
Antibody Type:	Recombinant Antibody
Clonality:	Monoclonal
Conjugate:	This Menin antibody is un-conjugated
Application:	Western Blotting (WB), ELISA

Product Details

Immunogen:	A synthesized peptide derived from human Menin
Clone:	8G11
Isotype:	IgG
Cross-Reactivity:	Human
Purification:	Affinity-chromatography

Target Details

Target:	Menin (MEN1)
Alternative Name:	MEN1 (MEN1 Products)
Background:	Background: Essential component of a MLL/SET1 histone methyltransferase (HMT) complex, a

Target Details

complex that specifically methylates 'Lys-4' of histone H3 (H3K4). Functions as a transcriptional regulator. Binds to the TERT promoter and represses telomerase expression. Plays a role in TGFB1-mediated inhibition of cell-proliferation, possibly regulating SMAD3 transcriptional activity. Represses JUND-mediated transcriptional activation on AP1 sites, as well as that mediated by NFkB subunit RELA. Positively regulates HOXC8 and HOXC6 gene expression. May be involved in normal hematopoiesis through the activation of HOXA9 expression (By similarity). May be involved in DNA repair.

Aliases: Menin, MEN1, SCG2

UniProt: [O00255](#)

Pathways: [Chromatin Binding](#), [Positive Regulation of Endopeptidase Activity](#)

Application Details

Application Notes: Recommended dilution: WB:1:500-1:5000,

Restrictions: For Research Use only

Handling

Format: Liquid

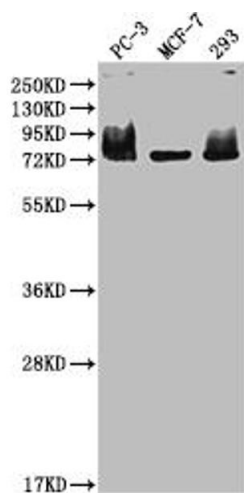
Buffer: Rabbit IgG in phosphate buffered saline, pH 7.4, 150 mM NaCl, 0.02 % sodium azide and 50 % glycerol.

Preservative: Sodium azide

Precaution of Use: This product contains Sodium azide: a POISONOUS AND HAZARDOUS SUBSTANCE which should be handled by trained staff only.

Storage: -20 °C, -80 °C

Storage Comment: Upon receipt, store at -20°C or -80°C. Avoid repeated freeze.



Western Blotting

Image 1. Western Blot Positive WB detected in: PC-3 whole cell lysate, MCF-7 whole cell lysate, 293 whole cell lysate
All lanes: MEN1 antibody at 1:2000 Secondary Goat polyclonal to rabbit IgG at 1/50000 dilution Predicted band size: 69, 68, 64 kDa Observed band size: 75 kDa