

Datasheet for ABIN7127617

Recombinant anti-METAP2 antibody[Go to Product page](#)**1** Image

Overview

Quantity:	100 µL
Target:	METAP2
Reactivity:	Human
Host:	Rabbit
Antibody Type:	Recombinant Antibody
Clonality:	Monoclonal
Conjugate:	This METAP2 antibody is un-conjugated
Application:	ELISA, Immunohistochemistry (IHC)

Product Details

Immunogen:	A synthesized peptide derived from human Methionine Aminopeptidase 2
Clone:	8F2
Isotype:	IgG
Cross-Reactivity:	Human
Purification:	Affinity-chromatography

Target Details

Target:	METAP2
Alternative Name:	METAP2 (METAP2 Products)
Background:	Background: Cotranslationally removes the N-terminal methionine from nascent proteins. The

Target Details

N-terminal methionine is often cleaved when the second residue in the primary sequence is small and uncharged (Met-Ala-, Cys, Gly, Pro, Ser, Thr, or Val). The catalytic activity of human METAP2 toward Met-Val peptides is consistently two orders of magnitude higher than that of METAP1, suggesting that it is responsible for processing proteins containing N-terminal Met-Val and Met-Thr sequences in vivo.

Aliases: Methionine aminopeptidase 2 (MAP 2) (MetAP 2) (EC 3.4.11.18) (Initiation factor 2-associated 67 kDa glycoprotein) (p67) (p67eIF2) (Peptidase M), METAP2, MNPEP P67EIF2

UniProt: [P50579](#)

Pathways: [Regulation of G-Protein Coupled Receptor Protein Signaling](#)

Application Details

Application Notes: Recommended dilution: IHC:1:50-1:200,

Restrictions: For Research Use only

Handling

Format: Liquid

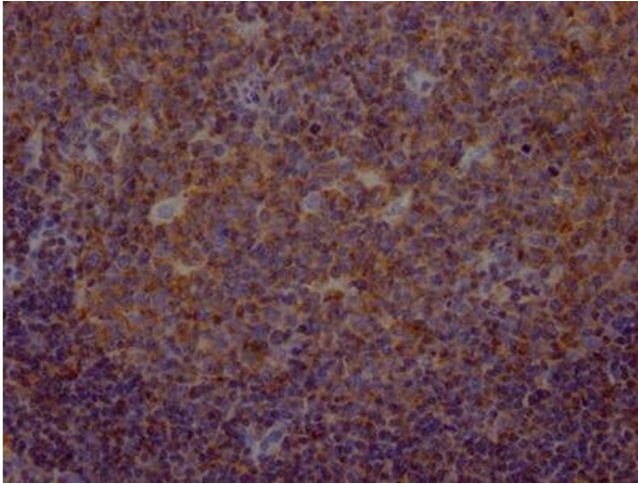
Buffer: Rabbit IgG in phosphate buffered saline, pH 7.4, 150 mM NaCl, 0.02 % sodium azide and 50 % glycerol.

Preservative: Sodium azide

Precaution of Use: This product contains Sodium azide: a POISONOUS AND HAZARDOUS SUBSTANCE which should be handled by trained staff only.

Storage: -20 °C,-80 °C

Storage Comment: Upon receipt, store at -20°C or -80°C. Avoid repeated freeze.



Immunohistochemistry

Image 1. IHC image of ABIN7127617 diluted at 1:100 and staining in paraffin-embedded human tonsil tissue performed on a Leica Bond™ system. After dewaxing and hydration, antigen retrieval was mediated by high pressure in a citrate buffer (pH 6.0). Section was blocked with 10 % normal goat serum 30 min at RT. Then primary antibody (1 % BSA) was incubated at 4 °C overnight. The primary is detected by a Goat anti-rabbit IgG polymer labeled by HRP and visualized using 0.05 % DAB.