

Datasheet for ABIN7127620

Recombinant anti-Midkine antibody[Go to Product page](#)**1** Image

Overview

Quantity:	100 µL
Target:	Midkine (MDK)
Reactivity:	Human
Host:	Rabbit
Antibody Type:	Recombinant Antibody
Clonality:	Monoclonal
Conjugate:	This Midkine antibody is un-conjugated
Application:	ELISA, Immunohistochemistry (IHC)

Product Details

Immunogen:	A synthesized peptide derived from human Midkine
Clone:	2G3
Isotype:	IgG
Cross-Reactivity:	Human
Purification:	Affinity-chromatography

Target Details

Target:	Midkine (MDK)
Alternative Name:	MDK (MDK Products)
Background:	Background: Developmentally regulated, secreted growth factor homologous to pleiotrophin

Target Details

(PTN), which has heparin binding activity. Binds anaplastic lymphoma kinase (ALK) which induces ALK activation and subsequent phosphorylation of the insulin receptor substrate (IRS1), followed by the activation of mitogen-activated protein kinase (MAPK) and PI3-kinase, and the induction of cell proliferation. Involved in neointima formation after arterial injury, possibly by mediating leukocyte recruitment. Also involved in early fetal adrenal gland development (By similarity).

Aliases: Midkine (MK) (Amphiregulin-associated protein) (ARAP) (Midgestation and kidney protein) (Neurite outgrowth-promoting factor 2) (Neurite outgrowth-promoting protein), MDK, MK1 NEGF2

UniProt: [P21741](#)

Pathways: [RTK Signaling](#), [M Phase](#), [Skeletal Muscle Fiber Development](#)

Application Details

Application Notes: Recommended dilution: IHC:1:50-1:200,

Restrictions: For Research Use only

Handling

Format: Liquid

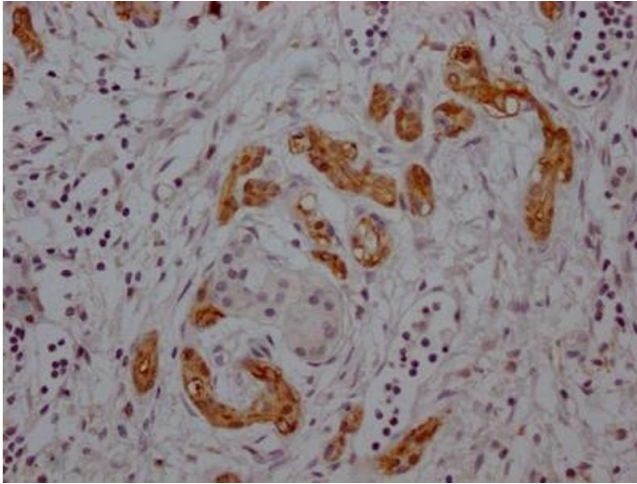
Buffer: Rabbit IgG in phosphate buffered saline, pH 7.4, 150 mM NaCl, 0.02 % sodium azide and 50 % glycerol.

Preservative: Sodium azide

Precaution of Use: This product contains Sodium azide: a POISONOUS AND HAZARDOUS SUBSTANCE which should be handled by trained staff only.

Storage: -20 °C,-80 °C

Storage Comment: Upon receipt, store at -20°C or -80°C. Avoid repeated freeze.



Immunohistochemistry

Image 1. IHC image of ABIN7127620 diluted at 1:100 and staining in paraffin-embedded human pancreatic cancer performed on a Leica Bond™ system. After dewaxing and hydration, antigen retrieval was mediated by high pressure in a citrate buffer (pH 6.0). Section was blocked with 10 % normal goat serum 30 min at RT. Then primary antibody (1 % BSA) was incubated at 4 °C overnight. The primary is detected by a Goat anti-rabbit IgG polymer labeled by HRP and visualized using 0.05 % DAB.