



[Go to Product page](#)

Datasheet for ABIN7127621

Recombinant anti-MIF antibody

1 Image

Overview

Quantity:	100 µL
Target:	MIF
Reactivity:	Human
Host:	Rabbit
Antibody Type:	Recombinant Antibody
Clonality:	Monoclonal
Conjugate:	This MIF antibody is un-conjugated
Application:	Western Blotting (WB), ELISA

Product Details

Immunogen:	A synthesized peptide derived from human MIF
Clone:	7A9
Isotype:	IgG
Cross-Reactivity:	Human
Purification:	Affinity-chromatography

Target Details

Target:	MIF
Alternative Name:	MIF (MIF Products)
Background:	Background: Pro-inflammatory cytokine. Involved in the innate immune response to bacterial

Target Details

pathogens. The expression of MIF at sites of inflammation suggests a role as mediator in regulating the function of macrophages in host defense. Counteracts the anti-inflammatory activity of glucocorticoids. Has phenylpyruvate tautomerase and dopachrome tautomerase activity (in vitro), but the physiological substrate is not known. It is not clear whether the tautomerase activity has any physiological relevance, and whether it is important for cytokine activity.

Aliases: Macrophage migration inhibitory factor (MIF) (EC 5.3.2.1) (Glycosylation-inhibiting factor) (GIF) (L-dopachrome isomerase) (L-dopachrome tautomerase) (EC 5.3.3.12) (Phenylpyruvate tautomerase), MIF, GLIF MMIF

UniProt: [P14174](#)

Pathways: [Regulation of Systemic Arterial Blood Pressure by Hormones](#), [Positive Regulation of Immune Effector Process](#), [Production of Molecular Mediator of Immune Response](#), [Regulation of Carbohydrate Metabolic Process](#), [Feeding Behaviour](#), [Smooth Muscle Cell Migration](#), [Negative Regulation of intrinsic apoptotic Signaling](#)

Application Details

Application Notes: Recommended dilution: WB:1:500-1:5000,

Restrictions: For Research Use only

Handling

Format: Liquid

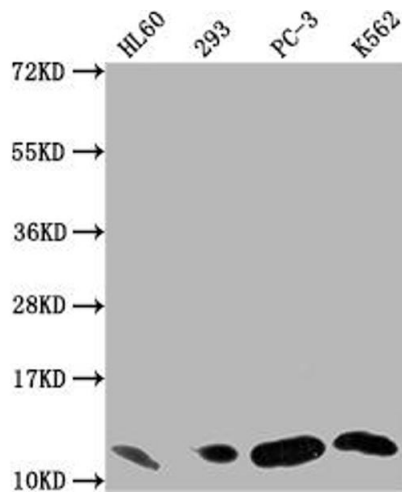
Buffer: Rabbit IgG in phosphate buffered saline, pH 7.4, 150 mM NaCl, 0.02 % sodium azide and 50 % glycerol.

Preservative: Sodium azide

Precaution of Use: This product contains Sodium azide: a POISONOUS AND HAZARDOUS SUBSTANCE which should be handled by trained staff only.

Storage: -20 °C,-80 °C

Storage Comment: Upon receipt, store at -20°C or -80°C. Avoid repeated freeze.



Western Blotting

Image 1. Western Blot Positive WB detected in: HL60 whole cell lysate, 293 whole cell lysate, PC-3 whole cell lysate, K562 whole cell lysate All lanes: MIF antibody at 1:1500 Secondary Goat polyclonal to rabbit IgG at 1/50000 dilution Predicted band size: 13 kDa Observed band size: 13 kDa