

Datasheet for ABIN7127624

**Recombinant anti-MMP12 antibody****2** Images[Go to Product page](#)

## Overview

Quantity:	100 µL
Target:	MMP12
Reactivity:	Human
Host:	Rabbit
Antibody Type:	Recombinant Antibody
Clonality:	Monoclonal
Conjugate:	This MMP12 antibody is un-conjugated
Application:	Western Blotting (WB), Immunohistochemistry (IHC), ELISA

## Product Details

Immunogen:	A synthesized peptide derived from human MMP12
Clone:	2G3
Isotype:	IgG
Cross-Reactivity:	Human
Purification:	Affinity-chromatography

## Target Details

Target:	MMP12
Alternative Name:	MMP12 ( <a href="#">MMP12 Products</a> )
Background:	Background: May be involved in tissue injury and remodeling. Has significant elastolytic activity.

## Target Details

Can accept large and small amino acids at the P1' site, but has a preference for leucine.  
Aromatic or hydrophobic residues are preferred at the P1 site, with small hydrophobic residues (preferably alanine) occupying P3.  
Aliases: Macrophage metalloelastase (MME) (EC 3.4.24.65) (Macrophage elastase) (ME) (hME) (Matrix metalloproteinase-12) (MMP-12), MMP12, HME

UniProt: [P39900](#)

## Application Details

Application Notes: Recommended dilution: WB:1:500-1:5000, IHC:1:50-1:200,

Restrictions: For Research Use only

## Handling

Format: Liquid

Buffer: Rabbit IgG in phosphate buffered saline, pH 7.4, 150 mM NaCl, 0.02 % sodium azide and 50 % glycerol.

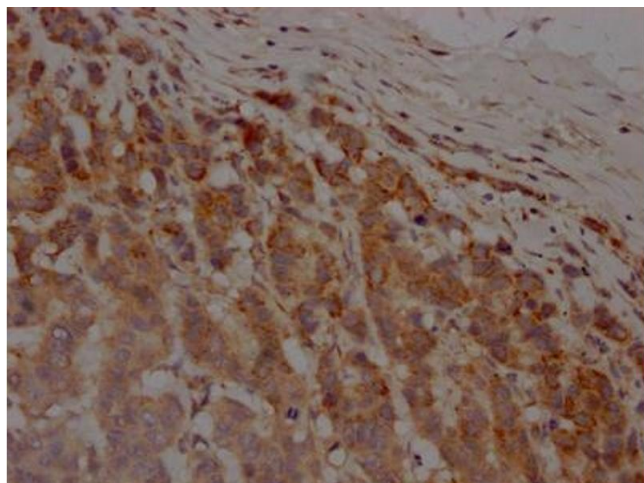
Preservative: Sodium azide

Precaution of Use: This product contains Sodium azide: a POISONOUS AND HAZARDOUS SUBSTANCE which should be handled by trained staff only.

Storage: -20 °C, -80 °C

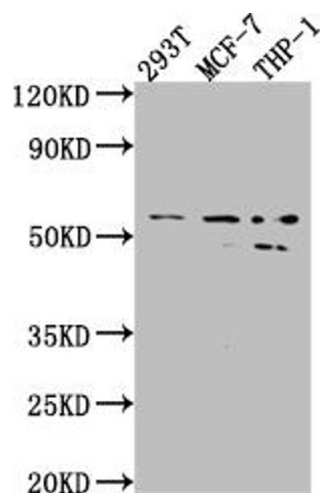
Storage Comment: Upon receipt, store at -20°C or -80°C. Avoid repeated freeze.

## Images



### Immunohistochemistry

**Image 1.** IHC image of ABIN7127624 diluted at 1:100 and staining in paraffin-embedded human breast cancer performed on a Leica Bond™ system. After dewaxing and hydration, antigen retrieval was mediated by high pressure in a citrate buffer (pH 6.0). Section was blocked with 10 % normal goat serum 30 min at RT. Then primary antibody (1 % BSA) was incubated at 4 °C overnight. The primary is detected by a Goat anti-rabbit IgG polymer labeled by HRP



and visualized using 0.05 % DAB.

Western Blotting

**Image 2.** Western Blot Positive WB detected in: 293T whole cell lysate, MCF-7 whole cell lysate, THP-1 whole cell lysate All lanes: MMP12 antibody at 1:1000 Secondary Goat polyclonal to rabbit IgG at 1/50000 dilution Predicted band size: 55 kDa Observed band size: 54, 45 kDa