

Datasheet for ABIN7127640

Recombinant anti-ELANE antibody[Go to Product page](#)**2** Images

Overview

Quantity:	100 µL
Target:	ELANE
Reactivity:	Human
Host:	Rabbit
Antibody Type:	Recombinant Antibody
Clonality:	Monoclonal
Conjugate:	This ELANE antibody is un-conjugated
Application:	ELISA, Immunohistochemistry (IHC), Flow Cytometry (FACS)

Product Details

Immunogen:	A synthesized peptide derived from human Neutrophil Elastase
Clone:	2H12
Isotype:	IgG
Cross-Reactivity:	Human
Purification:	Affinity-chromatography

Target Details

Target:	ELANE
Alternative Name:	ELANE (ELANE Products)
Background:	Background: Modifies the functions of natural killer cells, monocytes and granulocytes. Inhibits

Target Details

C5a-dependent neutrophil enzyme release and chemotaxis.

Aliases: Neutrophil elastase (EC 3.4.21.37) (Bone marrow serine protease) (Elastase-2) (Human leukocyte elastase) (HLE) (Medullasin) (PMN elastase), ELANE, ELA2

UniProt: [P08246](#)

Application Details

Application Notes: Recommended dilution: IHC:1:50-1:200, FC:1:20-1:200,

Restrictions: For Research Use only

Handling

Format: Liquid

Buffer: Rabbit IgG in phosphate buffered saline, pH 7.4, 150 mM NaCl, 0.02 % sodium azide and 50 % glycerol.

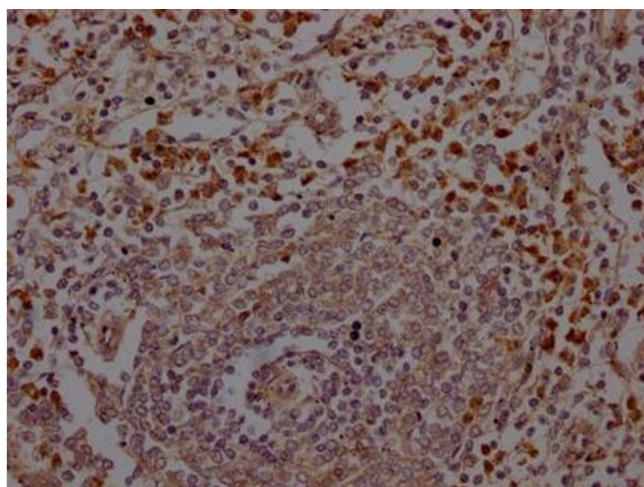
Preservative: Sodium azide

Precaution of Use: This product contains Sodium azide: a POISONOUS AND HAZARDOUS SUBSTANCE which should be handled by trained staff only.

Storage: -20 °C,-80 °C

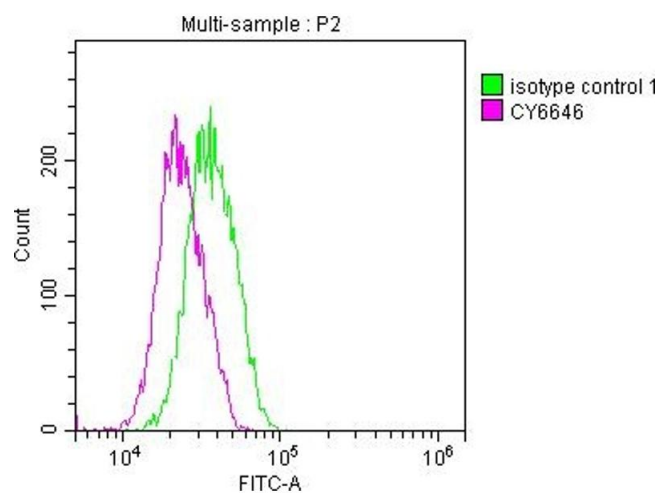
Storage Comment: Upon receipt, store at -20°C or -80°C. Avoid repeated freeze.

Images



Immunohistochemistry

Image 1. IHC image of ABIN7127640 diluted at 1:100 and staining in paraffin-embedded human spleen tissue performed on a Leica Bond™ system. After dewaxing and hydration, antigen retrieval was mediated by high pressure in a citrate buffer (pH 6.0). Section was blocked with 10 % normal goat serum 30 min at RT. Then primary antibody (1 % BSA) was incubated at 4 °C overnight. The primary is detected by a Goat anti-rabbit IgG polymer labeled by HRP and visualized using 0.05 % DAB.



Flow Cytometry

Image 2. Overlay histogram showing Jurkat cells stained with ABIN7127640 (red line) at 1:50. The cells were fixed with 70 % Ethylalcohol (18h) and then incubated in 10 % normal goat serum to block non-specific protein-protein interactions followed by the antibody (1 μ g/ 1×10^6 cells) for 1 h at 4 °C. The secondary antibody used was FITC-conjugated goat anti-rabbit IgG (H+L) at 1/200 dilution for 30 min at 4 °C. Control antibody (green line) was Rabbit IgG (1 μ g/ 1×10^6 cells) used under the same conditions. Acquisition of >10,000 events was performed.