



[Go to Product page](#)

Datasheet for ABIN7127648

Recombinant anti-NUDC antibody

1 Image

Overview

Quantity:	100 µL
Target:	NUDC
Reactivity:	Human
Host:	Rabbit
Antibody Type:	Recombinant Antibody
Clonality:	Monoclonal
Conjugate:	This NUDC antibody is un-conjugated
Application:	Western Blotting (WB), ELISA

Product Details

Immunogen:	A synthesized peptide derived from human NUDC
Clone:	6C3
Isotype:	IgG
Cross-Reactivity:	Human, Mouse, Rat
Purification:	Affinity-chromatography

Target Details

Target:	NUDC
Abstract:	NUDC Products
Background:	Background: Plays a role in neurogenesis and neuronal migration (By similarity). Necessary for

Target Details

correct formation of mitotic spindles and chromosome separation during mitosis. Necessary for cytokinesis and cell proliferation.

Aliases: Nuclear migration protein nudC (Nuclear distribution protein C homolog), NUDC

UniProt: [Q9Y266](#)

Application Details

Application Notes: Recommended dilution: WB:1:500-1:5000,

Restrictions: For Research Use only

Handling

Format: Liquid

Buffer: Rabbit IgG in phosphate buffered saline, pH 7.4, 150 mM NaCl, 0.02 % sodium azide and 50 % glycerol.

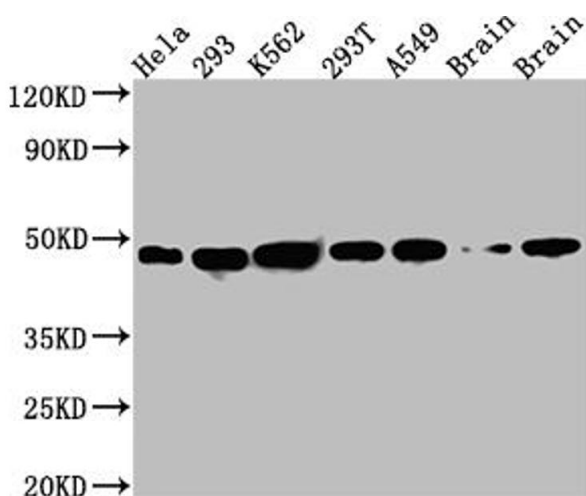
Preservative: Sodium azide

Precaution of Use: This product contains Sodium azide: a POISONOUS AND HAZARDOUS SUBSTANCE which should be handled by trained staff only.

Storage: -20 °C,-80 °C

Storage Comment: Upon receipt, store at -20°C or -80°C. Avoid repeated freeze.

Images



Western Blotting

Image 1. Western Blot Positive WB detected in: HeLa whole cell lysate, 293 whole cell lysate, K562 whole cell lysate, 293T whole cell lysate, A549 whole cell lysate, Rat Brain whole cell lysate, Mouse Brain whole cell lysate All lanes: NUDC antibody at 1:1000 Secondary Goat polyclonal to rabbit IgG at 1/50000 dilution Predicted band size: 39 kDa Observed band size: 45 kDa