

Datasheet for ABIN7127681

**Recombinant anti-BRAF antibody (pThr401)**[Go to Product page](#)**2** Images

## Overview

Quantity:	100 µL
Target:	BRAF
Binding Specificity:	pThr401
Reactivity:	Human
Host:	Rabbit
Antibody Type:	Recombinant Antibody
Clonality:	Monoclonal
Conjugate:	This BRAF antibody is un-conjugated
Application:	Western Blotting (WB), ELISA, Immunofluorescence (IF)

## Product Details

Immunogen:	A synthesized peptide derived from human Phospho-BRAF (T401)
Clone:	4B9
Isotype:	IgG
Cross-Reactivity:	Human
Purification:	Affinity-chromatography

## Target Details

Target:	BRAF
Alternative Name:	BRAF ( <a href="#">BRAF Products</a> )

## Target Details

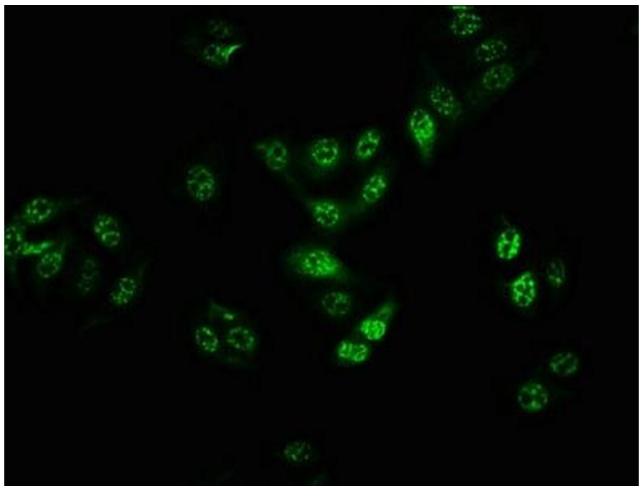
Background:	Background: Protein kinase involved in the transduction of mitogenic signals from the cell membrane to the nucleus. May play a role in the postsynaptic responses of hippocampal neuron. Phosphorylates MAP2K1, and thereby contributes to the MAP kinase signal transduction pathway.  Aliases: Serine/threonine-protein kinase B-raf, Proto-oncogene B-Raf, p94, v-Raf murine sarcoma viral oncogene homolog B1, BRAF, BRAF1, RAFB1
UniProt:	<a href="#">P15056</a>
Pathways:	<a href="#">MAPK Signaling</a> , <a href="#">RTK Signaling</a> , <a href="#">Neurotrophin Signaling Pathway</a> , <a href="#">Ribonucleoprotein Complex Subunit Organization</a> , <a href="#">Hepatitis C</a> , <a href="#">Autophagy</a>

## Application Details

Application Notes:	Recommended dilution: WB:1:500-1:5000, IF:1:20-1:200,
Restrictions:	For Research Use only

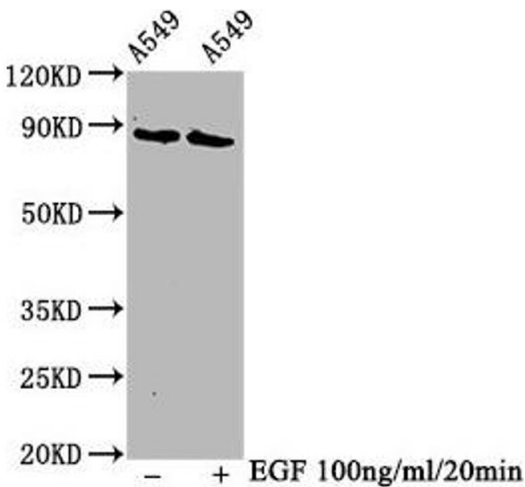
## Handling

Format:	Liquid
Buffer:	Rabbit IgG in phosphate buffered saline , pH 7.4, 150 mM NaCl, 0.02 % sodium azide and 50 % glycerol.
Preservative:	Sodium azide
Precaution of Use:	This product contains Sodium azide: a POISONOUS AND HAZARDOUS SUBSTANCE which should be handled by trained staff only.
Storage:	-20 °C,-80 °C
Storage Comment:	Upon receipt, store at -20°C or -80°C. Avoid repeated freeze.



### Immunofluorescence

**Image 1.** Immunofluorescence staining of HepG2 cells with ABIN7127681 at 1:100, counter-stained with DAPI. The cells were fixed in 4 % formaldehyde, permeabilized using 0.2 % Triton X-100 and blocked in 10 % normal Goat Serum. The cells were then incubated with the antibody overnight at 4 °C. The secondary antibody was Alexa Fluor 488-conjugated AffiniPure Goat Anti-Rabbit IgG (H+L).



### Western Blotting

**Image 2.** Western Blot Positive WB detected in A549 whole cell lysate (treated with EGF or not). All lanes Phospho-BRAF antibody at 1.3 µg/mL. Secondary Goat polyclonal to rabbit IgG at 1/50000 dilution. Predicted band size: 85 KDa. Observed band size: 85 KDa.