

Datasheet for ABIN7127685

Recombinant anti-CREB1 antibody (pSer133)[Go to Product page](#)

4 Images

Overview

Quantity:	100 µL
Target:	CREB1
Binding Specificity:	pSer133
Reactivity:	Human
Host:	Rabbit
Antibody Type:	Recombinant Antibody
Clonality:	Monoclonal
Conjugate:	This CREB1 antibody is un-conjugated
Application:	Western Blotting (WB), Immunohistochemistry (IHC), ELISA, Immunofluorescence (IF)

Product Details

Immunogen:	A synthesized peptide derived from human Phospho-CREB1 (S133)
Clone:	3C11
Isotype:	IgG
Cross-Reactivity:	Human
Purification:	Affinity-chromatography

Target Details

Target:	CREB1
Alternative Name:	CREB1 (CREB1 Products)

Target Details

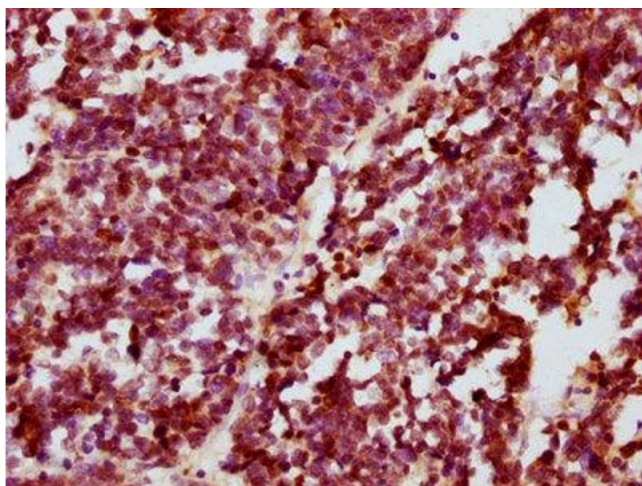
Background:	<p>Background: Phosphorylation-dependent transcription factor that stimulates transcription upon binding to the DNA cAMP response element (CRE), a sequence present in many viral and cellular promoters. Transcription activation is enhanced by the TORC coactivators which act independently of Ser-133 phosphorylation. Involved in different cellular processes including the synchronization of circadian rhythmicity and the differentiation of adipose cells.</p> <p>Aliases: Cyclic AMP-responsive element-binding protein 1, CREB-1, cAMP-responsive element-binding protein 1, CREB1</p>
UniProt:	P16220
Pathways:	TLR Signaling , Fc-epsilon Receptor Signaling Pathway , EGFR Signaling Pathway , Neurotrophin Signaling Pathway , Thyroid Hormone Synthesis , Activation of Innate immune Response , Myometrial Relaxation and Contraction , Regulation of Cell Size , Toll-Like Receptors Cascades , G-protein mediated Events , Interaction of EGFR with phospholipase C-gamma , Positive Regulation of fat Cell Differentiation

Application Details

Application Notes:	Recommended dilution: WB:1:500-1:5000, IHC:1:50-1:200, IF:1:20-1:200,
Restrictions:	For Research Use only

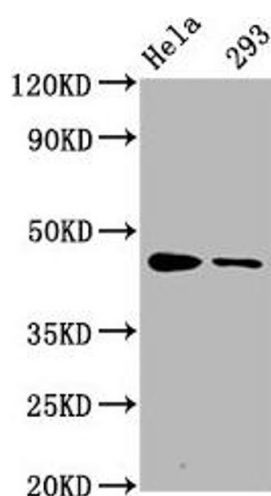
Handling

Format:	Liquid
Buffer:	Rabbit IgG in phosphate buffered saline , pH 7.4, 150 mM NaCl, 0.02 % sodium azide and 50 % glycerol.
Preservative:	Sodium azide
Precaution of Use:	This product contains Sodium azide: a POISONOUS AND HAZARDOUS SUBSTANCE which should be handled by trained staff only.
Storage:	-20 °C,-80 °C
Storage Comment:	Upon receipt, store at -20°C or -80°C. Avoid repeated freeze.



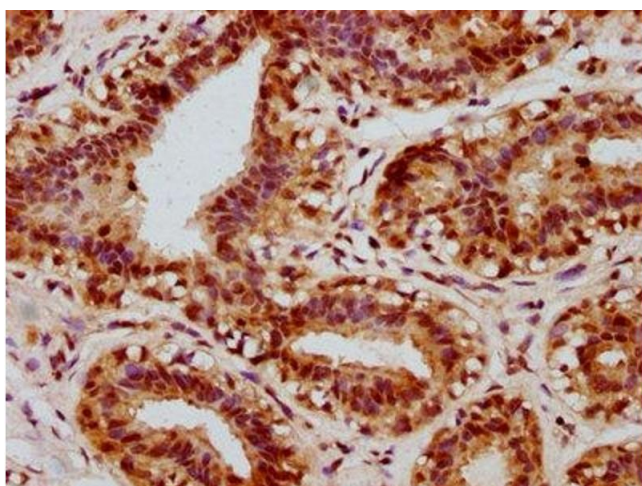
Immunohistochemistry

Image 1. IHC image of ABIN7127685 diluted at 1:100 and staining in paraffin-embedded human lung cancer performed on a Leica Bond™ system. After dewaxing and hydration, antigen retrieval was mediated by high pressure in a citrate buffer (pH 6.0). Section was blocked with 10 % normal goat serum 30 min at RT. Then primary antibody (1 % BSA) was incubated at 4 °C overnight. The primary is detected by a biotinylated secondary antibody and visualized using an HRP conjugated SP system.



Western Blotting

Image 2. Western Blot Positive WB detected in HeLa whole cell lysate, 293 whole cell lysate. All lanes Phospho-CREB1 antibody at 1.65 µg/mL. Secondary Goat polyclonal to rabbit IgG at 1/50000 dilution. Predicted band size: 46 kDa. Observed band size: 46 kDa.



Immunohistochemistry

Image 3. IHC image of ABIN7127685 diluted at 1:100 and staining in paraffin-embedded human breast cancer performed on a Leica Bond™ system. After dewaxing and hydration, antigen retrieval was mediated by high pressure in a citrate buffer (pH 6.0). Section was blocked with 10 % normal goat serum 30 min at RT. Then primary antibody (1 % BSA) was incubated at 4 °C overnight. The primary is detected by a biotinylated secondary antibody and visualized using an HRP conjugated SP system.

Please check the [product details page](#) for more images. Overall 4 images are available for ABIN7127685.