

Datasheet for ABIN7127691

Recombinant anti-EIF4E antibody (pSer209)[Go to Product page](#)**2** Images

Overview

| | |
|----------------------|--|
| Quantity: | 100 µL |
| Target: | EIF4E |
| Binding Specificity: | pSer209 |
| Reactivity: | Human |
| Host: | Rabbit |
| Antibody Type: | Recombinant Antibody |
| Clonality: | Monoclonal |
| Conjugate: | This EIF4E antibody is un-conjugated |
| Application: | Western Blotting (WB), Immunohistochemistry (IHC), ELISA |

Product Details

| | |
|-------------------|---|
| Immunogen: | A synthesized peptide derived from human Phospho-EIF4E (S209) |
| Clone: | 1F3 |
| Isotype: | IgG |
| Cross-Reactivity: | Human |
| Purification: | Affinity-chromatography |

Target Details

| | |
|-------------------|--|
| Target: | EIF4E |
| Alternative Name: | EIF4E (EIF4E Products) |

Target Details

Background: Background: Recognizes and binds the 7-methylguanosine-containing mRNA cap during an early step in the initiation of protein synthesis and facilitates ribosome binding by inducing the unwinding of the mRNAs secondary structures. Component of the CYFIP1-EIF4E-FMR1 complex which binds to the mRNA cap and mediates translational repression. In the CYFIP1-EIF4E-FMR1 complex this subunit mediates the binding to the mRNA cap.

Aliases: Eukaryotic translation initiation factor 4E, eIF-4E, eIF4E, eIF-4F 25 kDa subunit, mRNA cap-binding protein, EIF4E, EIF4EL1, EIF4F

UniProt: [P06730](#)

Pathways: [BCR Signaling](#)

Application Details

Application Notes: Recommended dilution: WB:1:500-1:5000, IHC:1:50-1:200,

Restrictions: For Research Use only

Handling

Format: Liquid

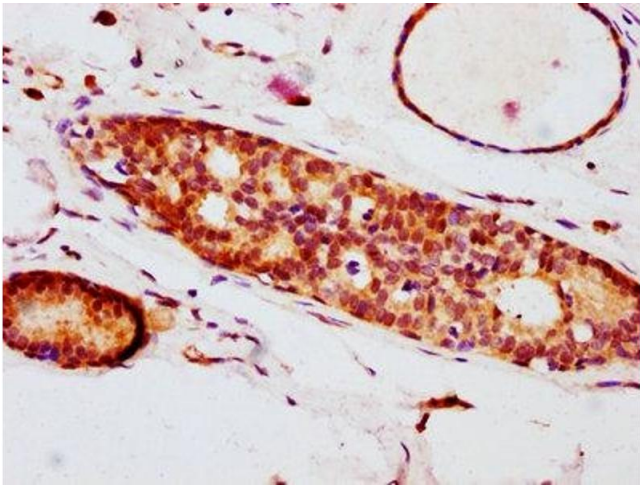
Buffer: Rabbit IgG in phosphate buffered saline , pH 7.4, 150 mM NaCl, 0.02 % sodium azide and 50 % glycerol.

Preservative: Sodium azide

Precaution of Use: This product contains Sodium azide: a POISONOUS AND HAZARDOUS SUBSTANCE which should be handled by trained staff only.

Storage: -20 °C,-80 °C

Storage Comment: Upon receipt, store at -20°C or -80°C. Avoid repeated freeze.



Immunohistochemistry

Image 1. IHC image of ABIN7127691 diluted at 1:100 and staining in paraffin-embedded human breast cancer performed on a Leica Bond™ system. After dewaxing and hydration, antigen retrieval was mediated by high pressure in a citrate buffer (pH 6.0). Section was blocked with 10 % normal goat serum 30 min at RT. Then primary antibody (1 % BSA) was incubated at 4 °C overnight. The primary is detected by a biotinylated secondary antibody and visualized using an HRP conjugated SP system.

Western Blotting

Image 2. Western Blot Positive WB detected in 293 whole cell lysate, HepG2 whole cell lysate (treated with Calyculin A or not). All lanes Phospho-EIF4E antibody at 1.2 µg/mL. Secondary Goat polyclonal to rabbit IgG at 1/50000 dilution. Predicted band size: 25 kDa. Observed band size: 25 kDa.

