

Datasheet for ABIN7127692

Recombinant anti-ERN1 antibody (pSer724)**2** Images[Go to Product page](#)

Overview

Quantity:	100 µL
Target:	ERN1
Binding Specificity:	pSer724
Reactivity:	Human
Host:	Rabbit
Antibody Type:	Recombinant Antibody
Clonality:	Monoclonal
Conjugate:	This ERN1 antibody is un-conjugated
Application:	Western Blotting (WB), ELISA, Immunofluorescence (IF)

Product Details

Immunogen:	A synthesized peptide derived from human Phospho-ERN1 (S724)
Clone:	1F12
Isotype:	IgG
Cross-Reactivity:	Human
Purification:	Affinity-chromatography

Target Details

Target:	ERN1
Alternative Name:	ERN1 (ERN1 Products)

Target Details

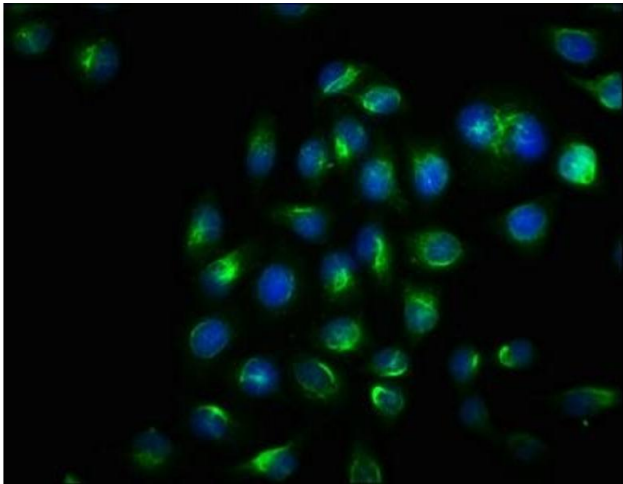
Background:	<p>Background: Senses unfolded proteins in the lumen of the endoplasmic reticulum via its N-terminal domain which leads to enzyme auto-activation (PubMed:9637683, PubMed:11175748, PubMed:12637535). The active endoribonuclease domain splices XBP1 mRNA to generate a new C-terminus, converting it into a potent unfolded-protein response transcriptional activator and triggering growth arrest and apoptosis (PubMed:24508390).</p> <p>Aliases: Serine/threonine-protein kinase/endoribonuclease IRE1, Endoplasmic reticulum-to-nucleus signaling 1, hIRE1p, Ire1-alpha, IRE1a, Serine/threonine-protein kinase, Endoribonuclease, ERN1</p>
UniProt:	O75460
Pathways:	ER-Nucleus Signaling , Unfolded Protein Response

Application Details

Application Notes:	Recommended dilution: WB:1:500-1:5000, IF:1:20-1:200,
Restrictions:	For Research Use only

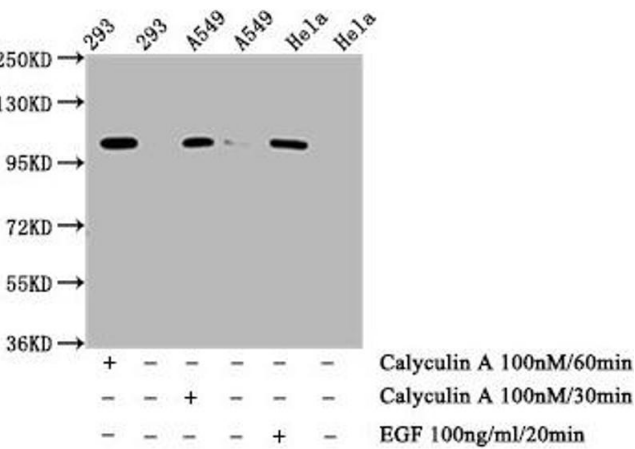
Handling

Format:	Liquid
Buffer:	Rabbit IgG in phosphate buffered saline , pH 7.4, 150 mM NaCl, 0.02 % sodium azide and 50 % glycerol.
Preservative:	Sodium azide
Precaution of Use:	This product contains Sodium azide: a POISONOUS AND HAZARDOUS SUBSTANCE which should be handled by trained staff only.
Storage:	-20 °C,-80 °C
Storage Comment:	Upon receipt, store at -20°C or -80°C. Avoid repeated freeze.



Immunofluorescence

Image 1. Immunofluorescence staining of HeLa cells with ABIN7127692 at 1:100, counter-stained with DAPI. The cells were fixed in 4% formaldehyde, permeabilized using 0.2% Triton X-100 and blocked in 10% normal Goat Serum. The cells were then incubated with the antibody overnight at 4°C. The secondary antibody was Alexa Fluor 488-conjugated AffiniPure Goat Anti-Rabbit IgG(H+L).



Western Blotting

Image 2. Western Blot Positive WB detected in: 293 whole cell lysate, A549 whole cell lysate, HeLa whole cell lysate (treated with Calyculin A or EGF) All lanes: Phospho-ERN1 antibody at 0.75µg/ml Secondary Goat polyclonal to rabbit IgG at 1/50000 dilution Predicted band size: 110 kDa Observed band size: 110 kDa