

Datasheet for ABIN7127698

Recombinant anti-Glycogen Synthase 1 antibody (pSer641)[Go to Product page](#)**2** Images

Overview

Quantity:	100 µL
Target:	Glycogen Synthase 1 (GYS1)
Binding Specificity:	pSer641
Reactivity:	Human
Host:	Rabbit
Antibody Type:	Recombinant Antibody
Clonality:	Monoclonal
Conjugate:	This Glycogen Synthase 1 antibody is un-conjugated
Application:	Western Blotting (WB), ELISA, Immunofluorescence (IF)

Product Details

Immunogen:	A synthesized peptide derived from human Phospho-GYS1 (S641)
Clone:	1D1
Isotype:	IgG
Cross-Reactivity:	Human
Purification:	Affinity-chromatography

Target Details

Target:	Glycogen Synthase 1 (GYS1)
Alternative Name:	GYS1 (GYS1 Products)

Target Details

Background:	Background: Transfers the glycosyl residue from UDP-Glc to the non-reducing end of alpha-1,4-glucan. Aliases: Glycogen [starch] synthase, muscle, GYS1, GYS
UniProt:	P13807
Pathways:	PI3K-Akt Signaling , AMPK Signaling , Cellular Glucan Metabolic Process

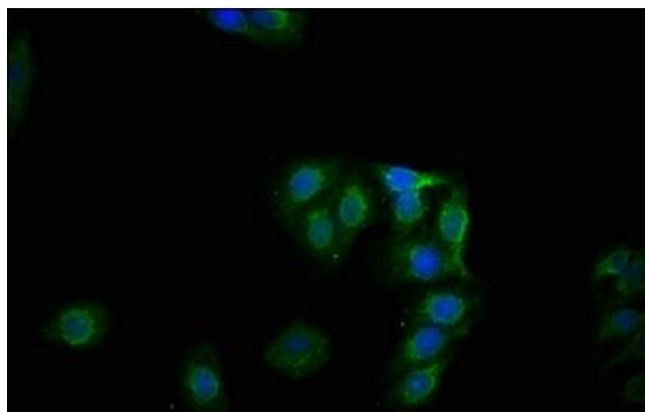
Application Details

Application Notes:	Recommended dilution: WB:1:500-1:5000, IF:1:20-1:200,
Restrictions:	For Research Use only

Handling

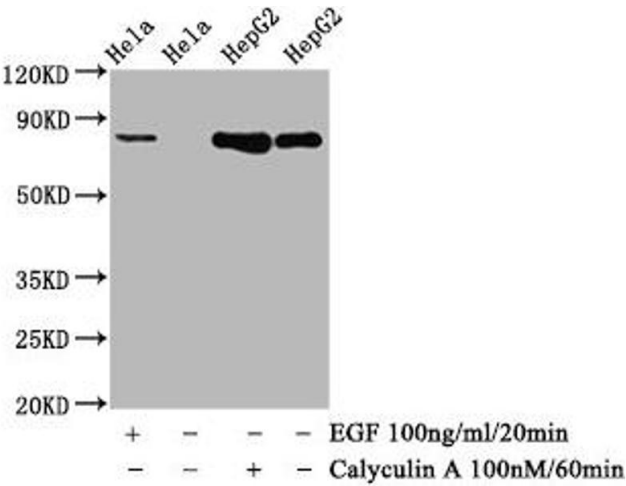
Format:	Liquid
Buffer:	Rabbit IgG in phosphate buffered saline , pH 7.4, 150 mM NaCl, 0.02 % sodium azide and 50 % glycerol.
Preservative:	Sodium azide
Precaution of Use:	This product contains Sodium azide: a POISONOUS AND HAZARDOUS SUBSTANCE which should be handled by trained staff only.
Storage:	-20 °C,-80 °C
Storage Comment:	Upon receipt, store at -20°C or -80°C. Avoid repeated freeze.

Images



Immunofluorescence

Image 1. Immunofluorescence staining of HepG2 cells with ABIN7127698 at 1:100, counter-stained with DAPI. The cells were fixed in 4 % formaldehyde, permeabilized using 0.2 % Triton X-100 and blocked in 10 % normal Goat Serum. The cells were then incubated with the antibody overnight at 4 °C. The secondary antibody was Alexa Fluor 488-conjugated AffiniPure Goat Anti-Rabbit IgG (H+L).



Western Blotting

Image 2. Western Blot Positive WB detected in HeLa whole cell lysate, HepG2 whole cell lysate (treated with Calyculin A or EGF). All lanes: Phospho-GYS1 antibody at 1.12 µg/mL. Secondary Goat polyclonal to rabbit IgG at 1/50000 dilution. Predicted band size: 85 KDa. Observed band size: 85 KDa.