

Datasheet for ABIN7127705

Recombinant anti-LAT antibody (pTyr191)

5 Images

[Go to Product page](#)

Overview

Quantity:	100 µL
Target:	LAT
Binding Specificity:	pTyr191
Reactivity:	Human
Host:	Rabbit
Antibody Type:	Recombinant Antibody
Clonality:	Monoclonal
Conjugate:	This LAT antibody is un-conjugated
Application:	Western Blotting (WB), ELISA, Immunohistochemistry (IHC), Immunoprecipitation (IP), Immunofluorescence (IF)

Product Details

Immunogen:	A synthesized peptide derived from human Phospho-LAT (Y191)
Clone:	2E4
Isotype:	IgG
Cross-Reactivity:	Human
Purification:	Affinity-chromatography

Target Details

Target:	LAT
---------	-----

Target Details

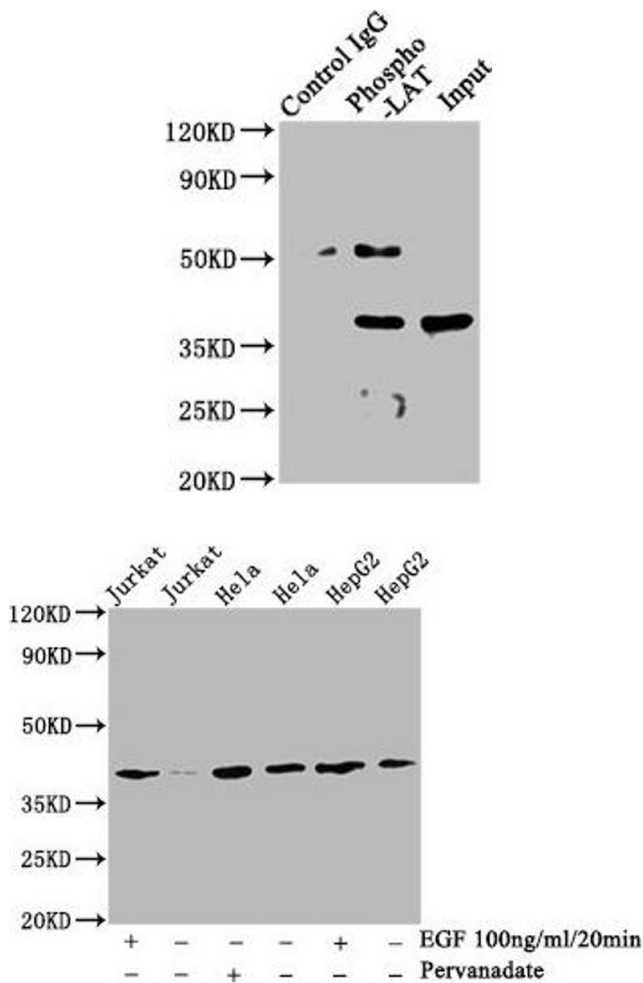
Alternative Name:	LAT (LAT Products)
Background:	<p>Background: Required for TCR (T-cell antigen receptor)- and pre-TCR-mediated signaling, both in mature T-cells and during their development. Involved in FCGR3 (low affinity immunoglobulin gamma Fc region receptor III)-mediated signaling in natural killer cells and FCER1 (high affinity immunoglobulin epsilon receptor)-mediated signaling in mast cells. Couples activation of these receptors and their associated kinases with distal intracellular events such as mobilization of intracellular calcium stores, PKC activation, MAPK activation or cytoskeletal reorganization through the recruitment of PLCG1, GRB2, GRAP2, and other signaling molecules.</p> <p>Aliases: Linker for activation of T-cells family member 1, 36 kDa phospho-tyrosine adapter protein, pp36, p36-38, LAT</p>
UniProt:	O43561
Pathways:	TCR Signaling , Fc-epsilon Receptor Signaling Pathway

Application Details

Application Notes:	Recommended dilution: WB:1:500-1:5000, IHC:1:50-1:200, IF:1:20-1:200, IP:1:200-1:1000,
Restrictions:	For Research Use only

Handling

Format:	Liquid
Buffer:	Rabbit IgG in phosphate buffered saline , pH 7.4, 150 mM NaCl, 0.02 % sodium azide and 50 % glycerol.
Preservative:	Sodium azide
Precaution of Use:	This product contains Sodium azide: a POISONOUS AND HAZARDOUS SUBSTANCE which should be handled by trained staff only.
Storage:	-20 °C,-80 °C
Storage Comment:	Upon receipt, store at -20°C or -80°C. Avoid repeated freeze.

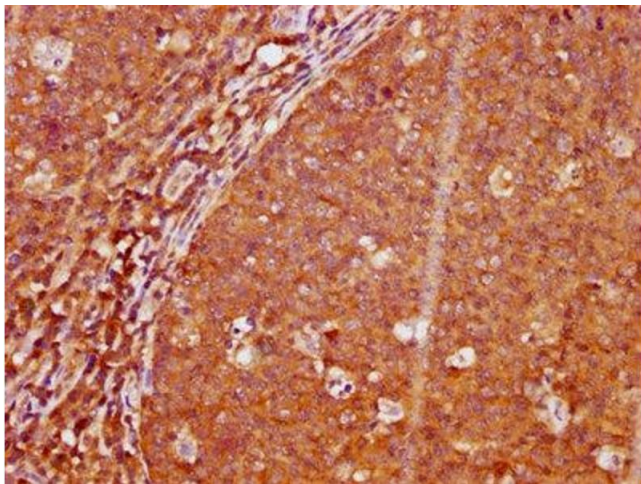


Western Blotting

Image 1. Immunoprecipitating Phospho-LAT in A549 whole cell lysate Lane 1: Rabbit control IgG(1µg)instead of ABIN7127705 in A549 whole cell lysate. For western blotting,a HRP-conjugated Protein G antibody was used as the secondary antibody (1/2000) Lane 2: ABIN7127705(3µg)+ A549 whole cell lysate(1mg) Lane 3: A549 whole cell lysate (20µg)

Western Blotting

Image 2. Western Blot Positive WB detected in:Jurkat whole cell lysate, HeLa whole cell lysate, HepG2 whole cell lysate(treated with EGF or Pervanadate) All lanes: Phospho-LAT antibody at 2.9µg/ml Secondary Goat polyclonal to rabbit IgG at 1/50000 dilution Predicted band size: 38 KDa Observed band size: 38 KDa



Immunohistochemistry

Image 3. IHC image of ABIN7127705 diluted at 1:100 and staining in paraffin-embedded human tonsil tissue performed on a Leica Bond™ system. After dewaxing and hydration, antigen retrieval was mediated by high pressure in a citrate buffer (pH 6.0). Section was blocked with 10% normal goat serum 30min at RT. Then primary antibody (1% BSA) was incubated at 4°C overnight. The primary is detected by a biotinylated secondary antibody and visualized using an HRP conjugated SP system.

Please check the [product details page](#) for more images. Overall 5 images are available for ABIN7127705.