

Datasheet for ABIN7127720

Recombinant anti-NRF2 antibody (pSer40)**3** Images[Go to Product page](#)

Overview

Quantity:	100 µL
Target:	NRF2 (NFE2L2)
Binding Specificity:	pSer40
Reactivity:	Human
Host:	Rabbit
Antibody Type:	Recombinant Antibody
Clonality:	Monoclonal
Conjugate:	This NRF2 antibody is un-conjugated
Application:	Western Blotting (WB), ELISA, Immunohistochemistry (IHC), Immunofluorescence (IF)

Product Details

Immunogen:	A synthesized peptide derived from human Phospho-NFE2L2 (S40)
Clone:	2E6
Isotype:	IgG
Cross-Reactivity:	Human
Purification:	Affinity-chromatography

Target Details

Target:	NRF2 (NFE2L2)
Alternative Name:	NFE2L2 (NFE2L2 Products)

Target Details

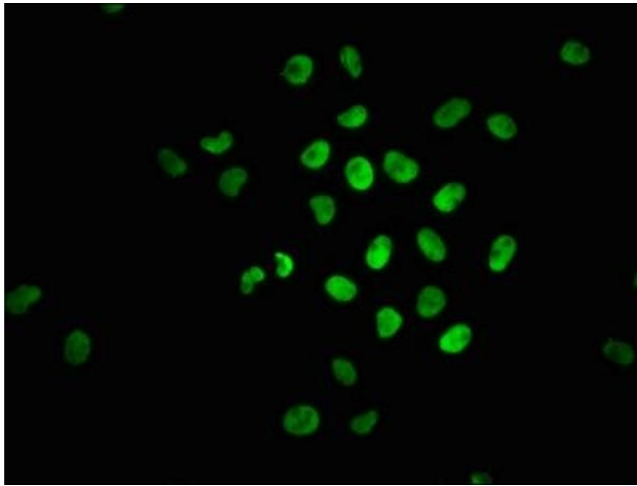
Background:	<p>Background: Transcription activator that binds to antioxidant response (ARE) elements in the promoter regions of target genes. Important for the coordinated up-regulation of genes in response to oxidative stress. May be involved in the transcriptional activation of genes of the beta-globin cluster by mediating enhancer activity of hypersensitive site 2 of the beta-globin locus control region.</p> <p>Aliases: Nuclear factor erythroid 2-related factor 2, NF-E2-related factor 2, NFE2-related factor 2, HEBP1, Nuclear factor, erythroid derived 2, like 2, NFE2L2, NRF2</p>
UniProt:	Q16236
Pathways:	ER-Nucleus Signaling , Negative Regulation of intrinsic apoptotic Signaling

Application Details

Application Notes:	Recommended dilution: WB:1:500-1:5000, IHC:1:50-1:200, IF:1:20-1:200,
Restrictions:	For Research Use only

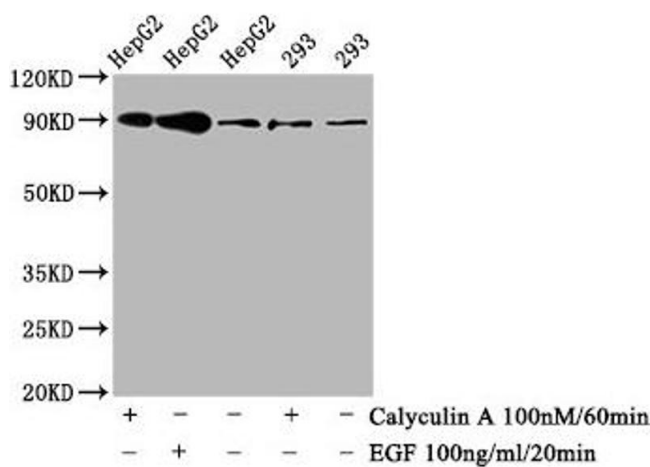
Handling

Format:	Liquid
Buffer:	Rabbit IgG in phosphate buffered saline , pH 7.4, 150 mM NaCl, 0.02 % sodium azide and 50 % glycerol.
Preservative:	Sodium azide
Precaution of Use:	This product contains Sodium azide: a POISONOUS AND HAZARDOUS SUBSTANCE which should be handled by trained staff only.
Storage:	-20 °C,-80 °C
Storage Comment:	Upon receipt, store at -20°C or -80°C. Avoid repeated freeze.



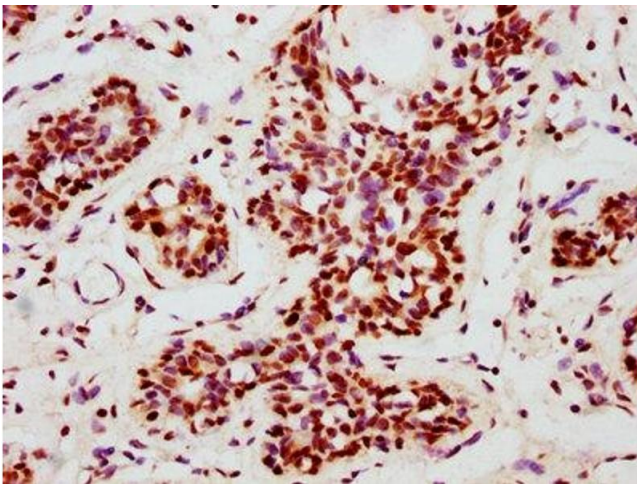
Immunofluorescence

Image 1. Immunofluorescence staining of HeLa cells with ABIN7127720 at 1:100, counter-stained with DAPI. The cells were fixed in 4 % formaldehyde, permeabilized using 0.2 % Triton X-100 and blocked in 10 % normal Goat Serum. The cells were then incubated with the antibody overnight at 4 °C. The secondary antibody was Alexa Fluor 488-conjugated AffiniPure Goat Anti-Rabbit IgG (H+L).



Western Blotting

Image 2. Western Blot Positive WB detected in HepG2 whole cell lysate, 293 whole cell lysate (treated with Calyculin A or EGF). All lanes Phospho-NFE2L2 antibody at 0.8 µg/mL. Secondary Goat polyclonal to rabbit IgG at 1/50000 dilution. Predicted band size: 90 KDa. Observed band size: 90 KDa.



Immunohistochemistry

Image 3. IHC image of ABIN7127694 diluted at 1:100 and staining in paraffin-embedded human breast cancer performed on a Leica Bond™ system. After dewaxing and hydration, antigen retrieval was mediated by high pressure in a citrate buffer (pH 6.0). Section was blocked with 10 % normal goat serum 30 min at RT. Then primary antibody (1 % BSA) was incubated at 4 °C overnight. The primary is detected by a biotinylated secondary antibody and visualized using an HRP conjugated SP system.