

Datasheet for ABIN7127727

**Recombinant anti-PPP2CA antibody (pTyr307)**[Go to Product page](#)**1** Image

## Overview

Quantity:	100 µL
Target:	PPP2CA
Binding Specificity:	pTyr307
Reactivity:	Human
Host:	Rabbit
Antibody Type:	Recombinant Antibody
Clonality:	Monoclonal
Conjugate:	This PPP2CA antibody is un-conjugated
Application:	Western Blotting (WB), ELISA

## Product Details

Immunogen:	A synthesized peptide derived from human Phospho-PPP2CA (Y307)
Clone:	3F11
Isotype:	IgG
Cross-Reactivity:	Human
Purification:	Affinity-chromatography

## Target Details

Target:	PPP2CA
Alternative Name:	PPP2CA ( <a href="#">PPP2CA Products</a> )

## Target Details

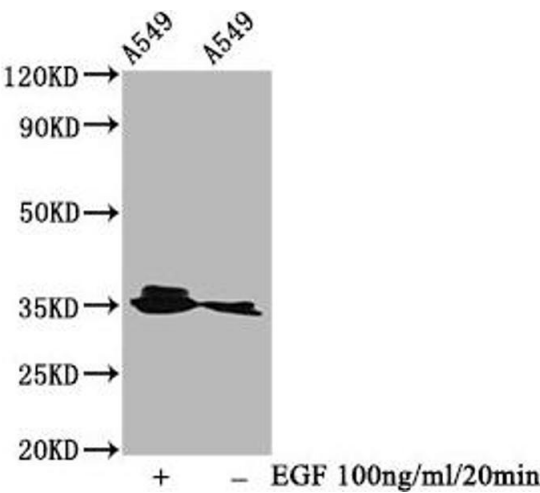
Background:	<p>Background: PP2A is the major phosphatase for microtubule-associated proteins (MAPs). PP2A can modulate the activity of phosphorylase B kinase casein kinase 2, mitogen-stimulated S6 kinase, and MAP-2 kinase. Cooperates with SGO2 to protect centromeric cohesin from separase-mediated cleavage in oocytes specifically during meiosis I (By similarity). Can dephosphorylate SV40 large T antigen and p53/TP53. Activates RAF1 by dephosphorylating it at 'Ser-259'.</p> <p>Aliases: Serine/threonine-protein phosphatase 2A catalytic subunit alpha isoform, PP2A-alpha, Replication protein C, RP-C, PPP2CA</p>
UniProt:	<a href="#">P67775</a>
Pathways:	<a href="#">PI3K-Akt Signaling</a> , <a href="#">Mitotic G1-G1/S Phases</a> , <a href="#">Hepatitis C</a> , <a href="#">Toll-Like Receptors Cascades</a>

## Application Details

Application Notes:	Recommended dilution: WB:1:500-1:5000,
Restrictions:	For Research Use only

## Handling

Format:	Liquid
Buffer:	Rabbit IgG in phosphate buffered saline , pH 7.4, 150 mM NaCl, 0.02 % sodium azide and 50 % glycerol.
Preservative:	Sodium azide
Precaution of Use:	This product contains Sodium azide: a POISONOUS AND HAZARDOUS SUBSTANCE which should be handled by trained staff only.
Storage:	-20 °C,-80 °C
Storage Comment:	Upon receipt, store at -20°C or -80°C. Avoid repeated freeze.



Western Blotting

**Image 1.** Western Blot Positive WB detected in A549 whole cell lysate(treated with EGF or not) All lanes Phospho-PPP2CA antibody at 0.95 µg/mL Secondary Goat polyclonal to rabbit IgG at 1/50000 dilution Predicted band size: 35 KDa Observed band size: 35 KDa