

Datasheet for ABIN7127769

**Recombinant anti-PKM antibody****5** Images[Go to Product page](#)

## Overview

|                |  |
|----------------|--|
| Quantity:      | 100 µL   |
| Target:        | PKM  |
| Reactivity:    | Human  |
| Host:          | Rabbit   |
| Antibody Type: | Recombinant Antibody   |
| Clonality:     | Monoclonal   |
| Conjugate:     | This PKM antibody is un-conjugated   |
| Application:   | ELISA, Western Blotting (WB), Immunohistochemistry (IHC), Immunofluorescence (IF), Immunoprecipitation (IP), Flow Cytometry (FACS) |

## Product Details

|                   |   |
|-------------------|---|
| Immunogen:        | A synthesized peptide derived from human PKM2 |
| Clone:            | 7B2   |
| Isotype:          | IgG   |
| Cross-Reactivity: | Human, Mouse                                  |
| Purification:     | Affinity-chromatography                       |

## Target Details

|                   |                                      |
|-------------------|--------------------------------------|
| Target:           | PKM                                  |
| Alternative Name: | PKM ( <a href="#">PKM Products</a> ) |

## Target Details

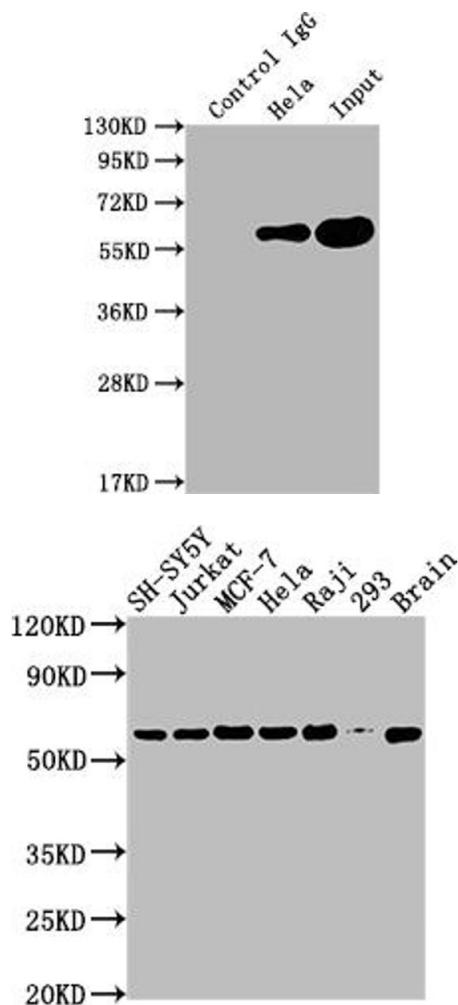
|             |   |
|-------------|---|
| Background: | <p>Background: Glycolytic enzyme that catalyzes the transfer of a phosphoryl group from phosphoenolpyruvate (PEP) to ADP, generating ATP. Stimulates POU5F1-mediated transcriptional activation. Plays a general role in caspase independent cell death of tumor cells. The ratio between the highly active tetrameric form and nearly inactive dimeric form determines whether glucose carbons are channeled to biosynthetic processes or used for glycolytic ATP production. The transition between the 2 forms contributes to the control of glycolysis and is important for tumor cell proliferation and survival.</p> <p>Aliases: Pyruvate kinase PKM (EC 2.7.1.40) (Cytosolic thyroid hormone-binding protein) (CTHBP) (Opa-interacting protein 3) (OIP-3) (Pyruvate kinase 2/3) (Pyruvate kinase muscle isozyme) (Thyroid hormone-binding protein 1) (THBP1) (Tumor M2-PK) (p58), PKM, OIP3 PK2 PK3 PKM2</p> |
| UniProt:    | <a href="#">P14618</a>  |
| Pathways:   | <a href="#">Warburg Effect</a>  |

## Application Details

|                    |   |
|--------------------|---|
| Application Notes: | Recommended dilution: WB:1:500-1:5000, IHC:1:50-1:200, IF:1:20-1:200, FC:1:20-1:200, IP:1:200-1:1000, |
| Restrictions:      | For Research Use only   |

## Handling

|                    |  |
|--------------------|--|
| Format:            | Liquid   |
| Buffer:            | Rabbit IgG in phosphate buffered saline, pH 7.4, 150 mM NaCl, 0.02 % sodium azide and 50 % glycerol.                   |
| Preservative:      | Sodium azide   |
| Precaution of Use: | This product contains Sodium azide: a POISONOUS AND HAZARDOUS SUBSTANCE which should be handled by trained staff only. |
| Storage:           | -20 °C,-80 °C  |
| Storage Comment:   | Upon receipt, store at -20°C or -80°C. Avoid repeated freeze.  |

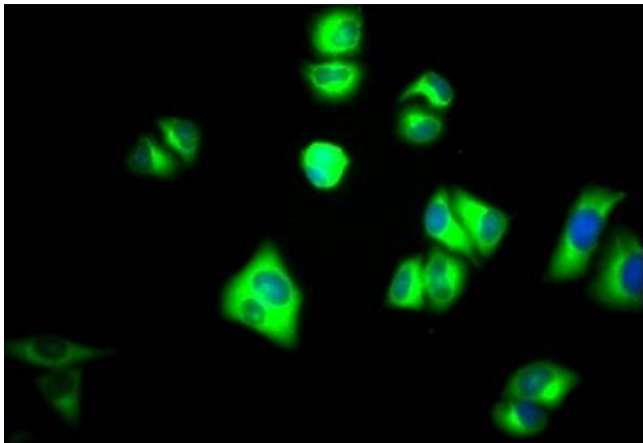


### Western Blotting

**Image 1.** Immunoprecipitating PKM in Hela whole cell lysate Lane 1: Rabbit control IgG instead of ABIN7127769 in Hela whole cell lysate. For western blotting, a HRP-conjugated Protein G antibody was used as the secondary antibody (1/2000) Lane 2: ABIN7127769(2 µg)+ Hela whole cell lysate(500 µg) Lane 3: Hela whole cell lysate (10 µg)

### Western Blotting

**Image 2.** Western Blot Positive WB detected in: SH-SY5Y whole cell lysate, Jurkat whole cell lysate, MCF-7 whole cell lysate, Hela whole cell lysate, Raji whole cell lysate, 293 whole cell lysate, Mouse brain tissue All lanes: PKM antibody at 1:2000 Secondary Goat polyclonal to rabbit IgG at 1/50000 dilution Predicted band size: 58, 59, 57 kDa Observed band size: 58 kDa



### Immunofluorescence

**Image 3.** Immunofluorescence staining of Hela Cells with ABIN7127769 at 1:50, counter-stained with DAPI. The cells were fixed in 4 % formaldehyde, permeated by 0.2 % TritonX-100, and blocked in 10 % normal Goat Serum. The cells were then incubated with the antibody overnight at 4 °C. Nuclear DNA was labeled in blue with DAPI. The secondary antibody was FITC-conjugated AffiniPure Goat Anti-Rabbit IgG (H+L).

Please check the [product details page](#) for more images. Overall 5 images are available for ABIN7127769.