



[Go to Product page](#)

Datasheet for ABIN7127784

## Recombinant anti-PTPN1 antibody

### 3 Images

#### Overview

Quantity:	100 µL
Target:	PTPN1
Reactivity:	Human
Host:	Rabbit
Antibody Type:	Recombinant Antibody
Clonality:	Monoclonal
Conjugate:	This PTPN1 antibody is un-conjugated
Application:	Western Blotting (WB), ELISA, Immunohistochemistry (IHC)

#### Product Details

Immunogen:	A synthesized peptide derived from human PTP1B
Clone:	1G3
Isotype:	IgG
Cross-Reactivity:	Human
Purification:	Affinity-chromatography

#### Target Details

Target:	PTPN1
Alternative Name:	PTPN1 ( <a href="#">PTPN1 Products</a> )
Background:	Background: Tyrosine-protein phosphatase which acts as a regulator of endoplasmic reticulum

## Target Details

---

unfolded protein response. Mediates dephosphorylation of EIF2AK3/PERK, inactivating the protein kinase activity of EIF2AK3/PERK. May play an important role in CKII- and p60c-src-induced signal transduction cascades. May regulate the EFNA5-EPHA3 signaling pathway which modulates cell reorganization and cell-cell repulsion. May also regulate the hepatocyte growth factor receptor signaling pathway through dephosphorylation of MET.

Aliases: Tyrosine-protein phosphatase non-receptor type 1 (EC 3.1.3.48) (Protein-tyrosine phosphatase 1B) (PTP-1B), PTPN1, PTP1B

---

UniProt: [P18031](#)

---

Pathways: [TLR Signaling](#), [Response to Growth Hormone Stimulus](#), [ER-Nucleus Signaling](#), [Platelet-derived growth Factor Receptor Signaling](#)

## Application Details

---

Application Notes: Recommended dilution: WB:1:500-1:5000, IHC:1:50-1:200,

---

Restrictions: For Research Use only

## Handling

---

Format: Liquid

---

Buffer: Rabbit IgG in phosphate buffered saline, pH 7.4, 150 mM NaCl, 0.02 % sodium azide and 50 % glycerol.

---

Preservative: Sodium azide

---

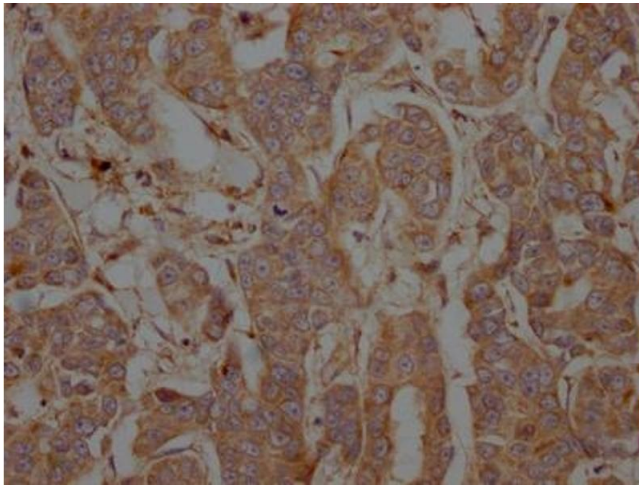
Precaution of Use: This product contains Sodium azide: a POISONOUS AND HAZARDOUS SUBSTANCE which should be handled by trained staff only.

---

Storage: -20 °C,-80 °C

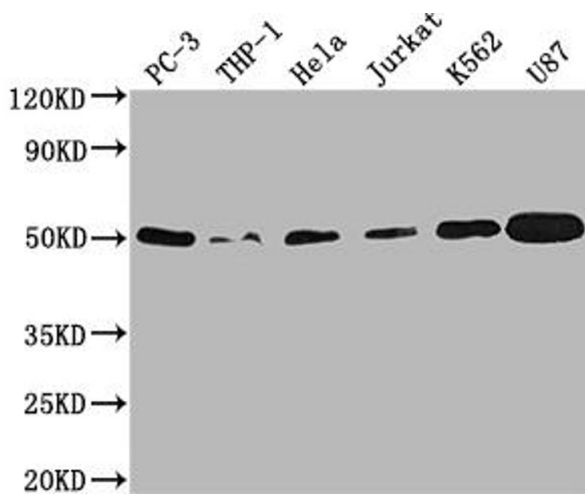
---

Storage Comment: Upon receipt, store at -20°C or -80°C. Avoid repeated freeze.



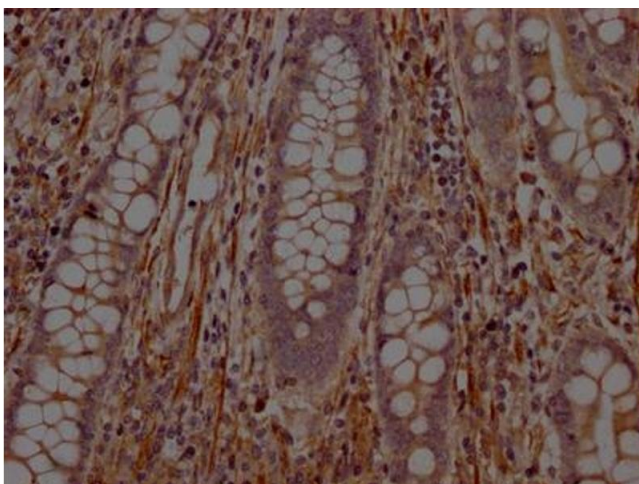
### Immunohistochemistry

**Image 1.** IHC image of ABIN7127784 diluted at 1:100 and staining in paraffin-embedded human breast cancer performed on a Leica Bond™ system. After dewaxing and hydration, antigen retrieval was mediated by high pressure in a citrate buffer (pH 6.0). Section was blocked with 10 % normal goat serum 30 min at RT. Then primary antibody (1 % BSA) was incubated at 4 °C overnight. The primary is detected by a Goat anti-rabbit IgG polymer labeled by HRP and visualized using 0.05 % DAB.



### Western Blotting

**Image 2.** Western Blot Positive WB detected in: PC-3 whole cell lysate, THP-1 whole cell lysate, HeLa whole cell lysate, Jurkat whole cell lysate, K562 whole cell lysate, U87 whole cell lysate All lanes: PTPN1 antibody at 1:2000 Secondary Goat polyclonal to rabbit IgG at 1/50000 dilution Predicted band size: 50 kDa Observed band size: 50 kDa



### Immunohistochemistry

**Image 3.** IHC image of ABIN7127784 diluted at 1:100 and staining in paraffin-embedded human colon cancer performed on a Leica Bond™ system. After dewaxing and hydration, antigen retrieval was mediated by high pressure in a citrate buffer (pH 6.0). Section was blocked with 10 % normal goat serum 30 min at RT. Then primary antibody (1 % BSA) was incubated at 4 °C overnight. The primary is detected by a Goat anti-rabbit IgG polymer labeled by HRP and visualized using 0.05 % DAB.