

Datasheet for ABIN7127792

Recombinant anti-RHEB antibody[Go to Product page](#)**1** Image

Overview

Quantity:	100 µL
Target:	RHEB
Reactivity:	Human
Host:	Rabbit
Antibody Type:	Recombinant Antibody
Clonality:	Monoclonal
Conjugate:	This RHEB antibody is un-conjugated
Application:	ELISA, Immunofluorescence (IF)

Product Details

Immunogen:	A synthesized peptide derived from human RHEB
Clone:	7G7
Isotype:	IgG
Cross-Reactivity:	Human
Purification:	Affinity-chromatography

Target Details

Target:	RHEB
Alternative Name:	RHEB (RHEB Products)
Background:	Background: Activates the protein kinase activity of mTORC1, and thereby plays a role in the

Target Details

regulation of apoptosis. Stimulates the phosphorylation of S6K1 and EIF4EBP1 through activation of mTORC1 signaling. Has low intrinsic GTPase activity.

Aliases: GTP-binding protein Rheb (Ras homolog enriched in brain), RHEB, RHEB2

UniProt: [Q15382](#)

Pathways: [RTK Signaling](#)

Application Details

Application Notes: Recommended dilution: IF:1:20-1:200,

Restrictions: For Research Use only

Handling

Format: Liquid

Buffer: Rabbit IgG in phosphate buffered saline, pH 7.4, 150 mM NaCl, 0.02 % sodium azide and 50 % glycerol.

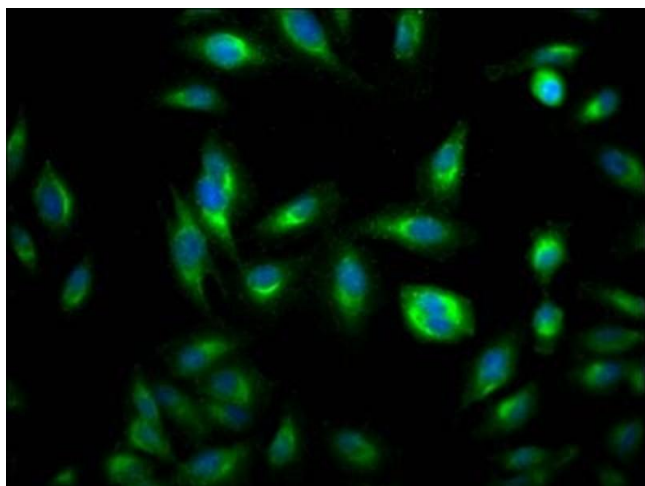
Preservative: Sodium azide

Precaution of Use: This product contains Sodium azide: a POISONOUS AND HAZARDOUS SUBSTANCE which should be handled by trained staff only.

Storage: -20 °C,-80 °C

Storage Comment: Upon receipt, store at -20°C or -80°C. Avoid repeated freeze.

Images



Immunofluorescence

Image 1. Immunofluorescence staining of HeLa Cells with ABIN7127792 at 1:50, counter-stained with DAPI. The cells were fixed in 4 % formaldehyde, permeated by 0.2 % TritonX-100, and blocked in 10 % normal Goat Serum. The cells were then incubated with the antibody overnight at 4 °C. Nuclear DNA was labeled in blue with DAPI. The secondary antibody was FITC-conjugated AffiniPure Goat Anti-Rabbit IgG (H+L).