

Datasheet for ABIN7127801

**Recombinant anti-STAG2 antibody****2** Images[Go to Product page](#)

## Overview

Quantity:	100 µL
Target:	STAG2
Reactivity:	Human
Host:	Rabbit
Antibody Type:	Recombinant Antibody
Clonality:	Monoclonal
Conjugate:	This STAG2 antibody is un-conjugated
Application:	Western Blotting (WB), ELISA, Immunofluorescence (IF)

## Product Details

Immunogen:	A synthesized peptide derived from human SA2
Clone:	3H4
Isotype:	IgG
Cross-Reactivity:	Human
Purification:	Affinity-chromatography

## Target Details

Target:	STAG2
Alternative Name:	STAG2 ( <a href="#">STAG2 Products</a> )
Background:	Background: Component of cohesin complex, a complex required for the cohesion of sister

## Target Details

---

chromatids after DNA replication. The cohesin complex apparently forms a large proteinaceous ring within which sister chromatids can be trapped. At anaphase, the complex is cleaved and dissociates from chromatin, allowing sister chromatids to segregate. The cohesin complex may also play a role in spindle pole assembly during mitosis.

Aliases: Cohesin subunit SA-2 (SCC3 homolog 2) (Stromal antigen 2), STAG2, SA2

---

UniProt: [Q8N3U4](#)

---

Pathways: [Stem Cell Maintenance](#)

## Application Details

---

Application Notes: Recommended dilution: WB:1:500-1:5000, IF:1:20-1:200,

---

Restrictions: For Research Use only

## Handling

---

Format: Liquid

---

Buffer: Rabbit IgG in phosphate buffered saline, pH 7.4, 150 mM NaCl, 0.02 % sodium azide and 50 % glycerol.

---

Preservative: Sodium azide

---

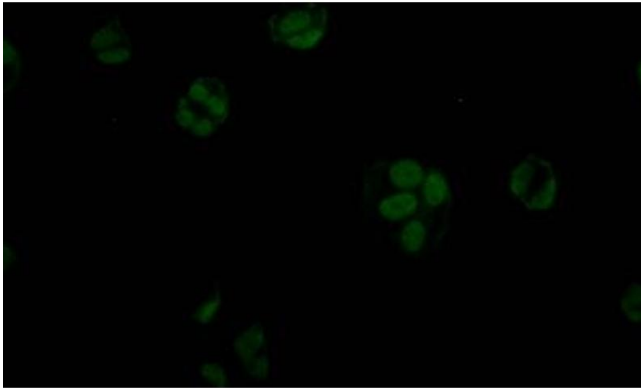
Precaution of Use: This product contains Sodium azide: a POISONOUS AND HAZARDOUS SUBSTANCE which should be handled by trained staff only.

---

Storage: -20 °C,-80 °C

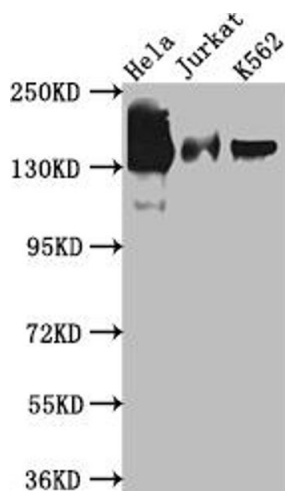
---

Storage Comment: Upon receipt, store at -20°C or -80°C. Avoid repeated freeze.



### Immunofluorescence

**Image 1.** Immunofluorescence staining of MCF7 Cells with ABIN7127801 at 1:50, counter-stained with DAPI. The cells were fixed in 4 % formaldehyde, permeated by 0.2 % TritonX-100, and blocked in 10 % normal Goat Serum. The cells were then incubated with the antibody overnight at 4 °C. Nuclear DNA was labeled in blue with DAPI. The secondary antibody was FITC-conjugated AffiniPure Goat Anti-Rabbit IgG (H+L).



### Western Blotting

**Image 2.** Western Blot Positive WB detected in: HeLa whole cell lysate, Jurkat whole cell lysate, K562 whole cell lysate. All lanes: SA2 antibody at 1:1000 Secondary Goat polyclonal to rabbit IgG at 1/50000 dilution Predicted band size: 142, 146 kDa Observed band size: 142 kDa