

Datasheet for ABIN7127820

**Recombinant anti-SSTR2 antibody**[Go to Product page](#)**1** Image

## Overview

|                |                                      |
|----------------|--------------------------------------|
| Quantity:      | 100 µL                               |
| Target:        | SSTR2                                |
| Reactivity:    | Human                                |
| Host:          | Rabbit                               |
| Antibody Type: | Recombinant Antibody                 |
| Clonality:     | Monoclonal                           |
| Conjugate:     | This SSTR2 antibody is un-conjugated |
| Application:   | Immunohistochemistry (IHC), ELISA    |

## Product Details

|                   |                                                                  |
|-------------------|------------------------------------------------------------------|
| Immunogen:        | A synthesized peptide derived from human Somatostatin Receptor 2 |
| Clone:            | 1C3                                                              |
| Isotype:          | IgG                                                              |
| Cross-Reactivity: | Human                                                            |
| Purification:     | Affinity-chromatography                                          |

## Target Details

|                   |                                                                                                |
|-------------------|------------------------------------------------------------------------------------------------|
| Target:           | SSTR2                                                                                          |
| Alternative Name: | SSTR2 ( <a href="#">SSTR2 Products</a> )                                                       |
| Background:       | Background: Receptor for somatostatin-14 and -28. This receptor is coupled via pertussis toxin |

## Target Details

sensitive G proteins to inhibition of adenylyl cyclase. In addition it stimulates phosphotyrosine phosphatase and PLC via pertussis toxin insensitive as well as sensitive G proteins. Inhibits calcium entry by suppressing voltage-dependent calcium channels. Acts as the functionally dominant somatostatin receptor in pancreatic alpha- and beta-cells where it mediates the inhibitory effect of somatostatin-14 on hormone secretion. Inhibits cell growth through enhancement of MAPK1 and MAPK2 phosphorylation and subsequent up-regulation of CDKN1B. Stimulates neuronal migration and axon outgrowth and may participate in neuron development and maturation during brain development. Mediates negative regulation of insulin receptor signaling through PTPN6. Inactivates SSTR3 receptor function following heterodimerization.

Aliases: Somatostatin receptor type 2 (SS-2-R) (SS2-R) (SS2R) (SRIF-1), SSTR2

UniProt: [P30874](#)

## Application Details

Application Notes: Recommended dilution: IHC:1:50-1:200,

Restrictions: For Research Use only

## Handling

Format: Liquid

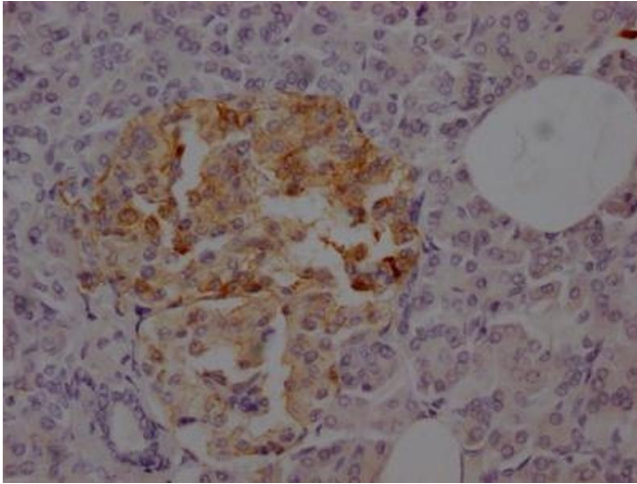
Buffer: Rabbit IgG in phosphate buffered saline, pH 7.4, 150 mM NaCl, 0.02 % sodium azide and 50 % glycerol.

Preservative: Sodium azide

Precaution of Use: This product contains Sodium azide: a POISONOUS AND HAZARDOUS SUBSTANCE which should be handled by trained staff only.

Storage: -20 °C,-80 °C

Storage Comment: Upon receipt, store at -20°C or -80°C. Avoid repeated freeze.



#### Immunohistochemistry

**Image 1.** IHC image of ABIN7127820 diluted at 1:100 and staining in paraffin-embedded human pancreatic tissue performed on a Leica Bond™ system. After dewaxing and hydration, antigen retrieval was mediated by high pressure in a citrate buffer (pH 6.0). Section was blocked with 10 % normal goat serum 30 min at RT. Then primary antibody (1 % BSA) was incubated at 4 °C overnight. The primary is detected by a Goat anti-rabbit IgG polymer labeled by HRP and visualized using 0.05 % DAB.