



[Go to Product page](#)

Datasheet for ABIN7127829

Recombinant anti-STIP1 antibody

1 Image

Overview

Quantity:	100 µL
Target:	STIP1
Reactivity:	Human
Host:	Rabbit
Antibody Type:	Recombinant Antibody
Clonality:	Monoclonal
Conjugate:	This STIP1 antibody is un-conjugated
Application:	Western Blotting (WB), ELISA

Product Details

Immunogen:	A synthesized peptide derived from human STIP1
Clone:	3E4
Isotype:	IgG
Cross-Reactivity:	Human
Purification:	Affinity-chromatography

Target Details

Target:	STIP1
Alternative Name:	STIP1 (STIP1 Products)
Background:	Background: Acts as a co-chaperone for HSP90AA1 (PubMed:27353360). Mediates the

Target Details

association of the molecular chaperones HSPA8/HSC70 and HSP90 (By similarity).

Aliases: Stress-induced-phosphoprotein 1, STI1, Hsc70/Hsp90-organizing protein, Hop, Renal carcinoma antigen NY-REN-11, Transformation-sensitive protein IEF SSP 3521, STIP1

UniProt: [P31948](#)

Application Details

Application Notes: Recommended dilution: WB:1:500-1:5000,

Restrictions: For Research Use only

Handling

Format: Liquid

Buffer: Rabbit IgG in phosphate buffered saline , pH 7.4, 150 mM NaCl, 0.02 % sodium azide and 50 % glycerol.

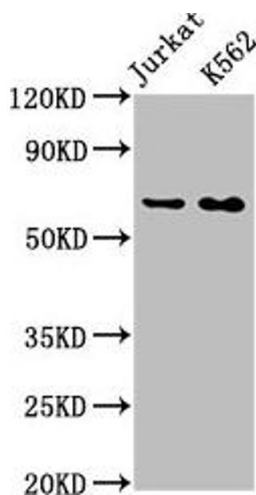
Preservative: Sodium azide

Precaution of Use: This product contains Sodium azide: a POISONOUS AND HAZARDOUS SUBSTANCE which should be handled by trained staff only.

Storage: -20 °C,-80 °C

Storage Comment: Upon receipt, store at -20°C or -80°C. Avoid repeated freeze.

Images



Western Blotting

Image 1. Western Blot Positive WB detected in: Jurkat whole cell lysate, K562 whole cell lysate All lanes: STIP1 antibody at 0.9 µg/mL Secondary Goat polyclonal to rabbit IgG at 1/50000 dilution Predicted band size: 63, 69, 60 KDa Observed band size: 63 KDa