



[Go to Product page](#)

Datasheet for ABIN7127832

## Recombinant anti-SUZ12 antibody

### 3 Images

#### Overview

Quantity:	100 µL
Target:	SUZ12
Reactivity:	Human
Host:	Rabbit
Antibody Type:	Recombinant Antibody
Clonality:	Monoclonal
Conjugate:	This SUZ12 antibody is un-conjugated
Application:	Western Blotting (WB), ELISA, Immunohistochemistry (IHC), Immunoprecipitation (IP)

#### Product Details

Immunogen:	A synthesized peptide derived from human SUZ12
Clone:	1B10
Isotype:	IgG
Cross-Reactivity:	Human
Purification:	Affinity-chromatography

#### Target Details

Target:	SUZ12
Alternative Name:	SUZ12 ( <a href="#">SUZ12 Products</a> )
Background:	Background: Polycomb group (PcG) protein. Component of the PRC2/EED-EZH2 complex,

## Target Details

---

which methylates 'Lys-9' (H3K9me) and 'Lys-27' (H3K27me) of histone H3, leading to transcriptional repression of the affected target gene. The PRC2/EED-EZH2 complex may also serve as a recruiting platform for DNA methyltransferases, thereby linking two epigenetic repression systems. Genes repressed by the PRC2/EED-EZH2 complex include HOXC8, HOXA9, MYT1 and CDKN2A.

Aliases: Polycomb protein SUZ12 (Chromatin precipitated E2F target 9 protein) (ChET 9 protein) (Joined to JAZF1 protein) (Suppressor of zeste 12 protein homolog), SUZ12, CHET9 JJAZ1 KIAA0160

---

UniProt: [Q15022](#)

## Application Details

---

Application Notes: Recommended dilution: WB:1:500-1:5000, IHC:1:50-1:200, IP:1:200-1:1000,

Restrictions: For Research Use only

## Handling

---

Format: Liquid

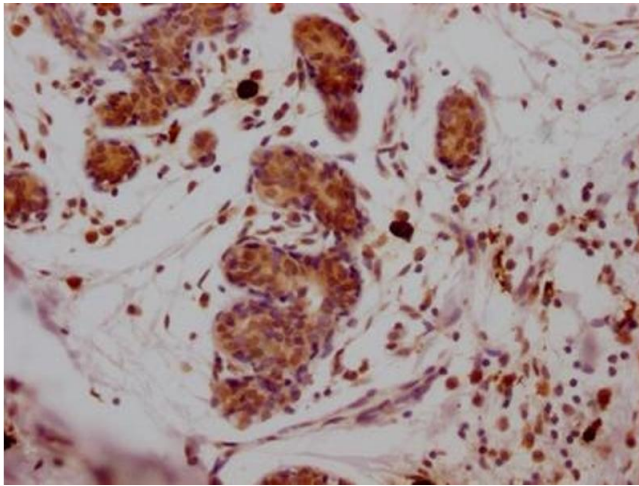
Buffer: Rabbit IgG in phosphate buffered saline, pH 7.4, 150 mM NaCl, 0.02 % sodium azide and 50 % glycerol.

Preservative: Sodium azide

Precaution of Use: This product contains Sodium azide: a POISONOUS AND HAZARDOUS SUBSTANCE which should be handled by trained staff only.

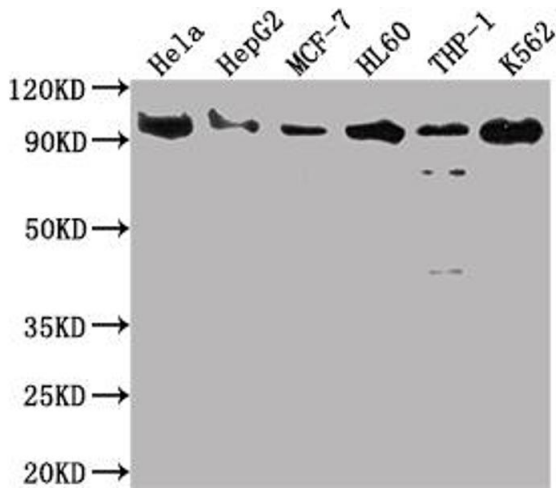
Storage: -20 °C,-80 °C

Storage Comment: Upon receipt, store at -20°C or -80°C. Avoid repeated freeze.



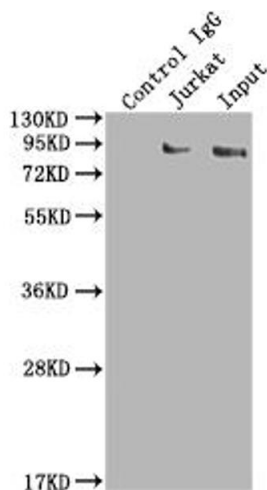
### Immunohistochemistry

**Image 1.** IHC image of ABIN7127832 diluted at 1:100 and staining in paraffin-embedded human breast cancer performed on a Leica Bond™ system. After dewaxing and hydration, antigen retrieval was mediated by high pressure in a citrate buffer (pH 6.0). Section was blocked with 10 % normal goat serum 30 min at RT. Then primary antibody (1 % BSA) was incubated at 4 °C overnight. The primary is detected by a Goat anti-rabbit IgG polymer labeled by HRP and visualized using 0.05 % DAB.



### Western Blotting

**Image 2.** Western Blot Positive WB detected in: HeLa whole cell lysate, HepG2 whole cell lysate, MCF-7 whole cell lysate, HL60 whole cell lysate, THP-1 whole cell lysate, K562 whole cell lysate All lanes: SUZ12 antibody at 1:2000 Secondary Goat polyclonal to rabbit IgG at 1/50000 dilution Predicted band size: 84 kDa Observed band size: 90 kDa



### Western Blotting

**Image 3.** Immunoprecipitating SUZ12 in K562 whole cell lysate Lane 1: Rabbit control IgG instead of ABIN7127832 in K562 whole cell lysate. For western blotting, a HRP-conjugated Protein G antibody was used as the secondary antibody (1/2000) Lane 2: ABIN7127832(2 µg)+ K562 whole cell lysate(500 µg) Lane 3: K562 whole cell lysate (10 µg)