

Datasheet for ABIN7127838

Recombinant anti-TPT1 antibody

4 Images

[Go to Product page](#)

Overview

Quantity:	100 µL
Target:	TPT1
Reactivity:	Human
Host:	Rabbit
Antibody Type:	Recombinant Antibody
Clonality:	Monoclonal
Conjugate:	This TPT1 antibody is un-conjugated
Application:	Western Blotting (WB), ELISA, Immunohistochemistry (IHC), Immunofluorescence (IF), Immunoprecipitation (IP)

Product Details

Immunogen:	A synthesized peptide derived from human TCTP
Clone:	10A9
Isotype:	IgG
Cross-Reactivity:	Human, Mouse
Purification:	Affinity-chromatography

Target Details

Target:	TPT1
Alternative Name:	TPT1 (TPT1 Products)

Target Details

Background: Background: Involved in calcium binding and microtubule stabilization.
Aliases: Translationally-controlled tumor protein (TCTP) (Fortilin) (Histamine-releasing factor) (HRF) (p23), TPT1

UniProt: [P13693](#)

Pathways: [Response to Water Deprivation](#), [Regulation of Cell Size](#), [Negative Regulation of intrinsic apoptotic Signaling](#)

Application Details

Application Notes: Recommended dilution: WB:1:500-1:5000, IHC:1:50-1:200, IF:1:20-1:200, IP:1:200-1:1000,

Restrictions: For Research Use only

Handling

Format: Liquid

Buffer: Rabbit IgG in phosphate buffered saline, pH 7.4, 150 mM NaCl, 0.02 % sodium azide and 50 % glycerol.

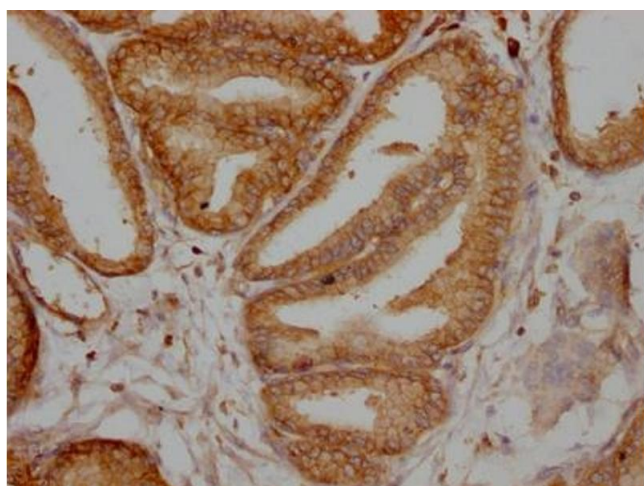
Preservative: Sodium azide

Precaution of Use: This product contains Sodium azide: a POISONOUS AND HAZARDOUS SUBSTANCE which should be handled by trained staff only.

Storage: -20 °C,-80 °C

Storage Comment: Upon receipt, store at -20°C or -80°C. Avoid repeated freeze.

Images



Immunohistochemistry

Image 1. IHC image of ABIN7127838 diluted at 1:100 and staining in paraffin-embedded human prostate tissue performed on a Leica Bond™ system. After dewaxing and hydration, antigen retrieval was mediated by high pressure in a citrate buffer (pH 6.0). Section was blocked with 10 % normal goat serum 30 min at RT. Then primary antibody (1 % BSA) was incubated at 4 °C overnight. The primary is detected by a Goat anti-rabbit IgG polymer labeled by HRP

and visualized using 0.05 % DAB.

Western Blotting

Image 2. Western Blot Positive WB detected in: HeLa whole cell lysate, Jurkat whole cell lysate, MCF-7 whole cell lysate, RAW264.7 whole cell lysate, HepG2 whole cell lysate, PC-3 whole cell lysate, Raji whole cell lysate, 293 whole cell lysate, Mouse liver tissue All lanes: TPT1 antibody at 1:2000 Secondary Goat polyclonal to rabbit IgG at 1/50000 dilution Predicted band size: 20, 16 kDa Observed band size: 25 kDa

Immunofluorescence

Image 3. Immunofluorescence staining of SY5Y Cells with ABIN7127838 at 1:50, counter-stained with DAPI. The cells were fixed in 4 % formaldehyde, permeated by 0.2 % TritonX-100, and blocked in 10 % normal Goat Serum. The cells were then incubated with the antibody overnight at 4 °C. Nuclear DNA was labeled in blue with DAPI. The secondary antibody was FITC-conjugated AffiniPure Goat Anti-Rabbit IgG (H+L).

Please check the [product details page](#) for more images. Overall 4 images are available for ABIN7127838.