

Datasheet for ABIN7127858

**Recombinant anti-TSPO antibody**[Go to Product page](#)**6** Images

## Overview

Quantity:	100 µL
Target:	TSPO
Reactivity:	Human
Host:	Rabbit
Antibody Type:	Recombinant Antibody
Clonality:	Monoclonal
Conjugate:	This TSPO antibody is un-conjugated
Application:	Western Blotting (WB), ELISA, Immunohistochemistry (IHC), Immunoprecipitation (IP), Immunofluorescence (IF), Flow Cytometry (FACS)

## Product Details

Immunogen:	A synthesized peptide derived from human TSPO
Clone:	23G2
Isotype:	IgG
Cross-Reactivity:	Human, Mouse
Purification:	Affinity-chromatography

## Target Details

Target:	TSPO
Alternative Name:	TSPO ( <a href="#">TSPO Products</a> )

## Target Details

Background:	<p>Background: Can bind protoporphyrin IX and may play a role in the transport of porphyrins and heme (By similarity). Promotes the transport of cholesterol across mitochondrial membranes and may play a role in lipid metabolism (PubMed:24814875), but its precise physiological role is controversial. It is apparently not required for steroid hormone biosynthesis. Was initially identified as peripheral-type benzodiazepine receptor, can also bind isoquinoline carboxamides (PubMed:1847678).</p> <p>Aliases: Translocator protein, Mitochondrial benzodiazepine receptor, PKBS, Peripheral-type benzodiazepine receptor, PBR, TSPO, BZRP, MBR</p>
-------------	---

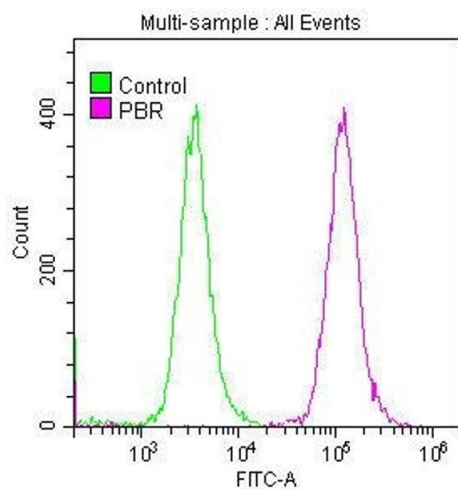
UniProt:	<a href="#">P30536</a>
Pathways:	<a href="#">Cellular Response to Molecule of Bacterial Origin</a>

## Application Details

Application Notes:	Recommended dilution: WB:1:500-1:5000, IHC:1:50-1:200, IF:1:20-1:200, IP:1:200-1:1000,
Restrictions:	For Research Use only

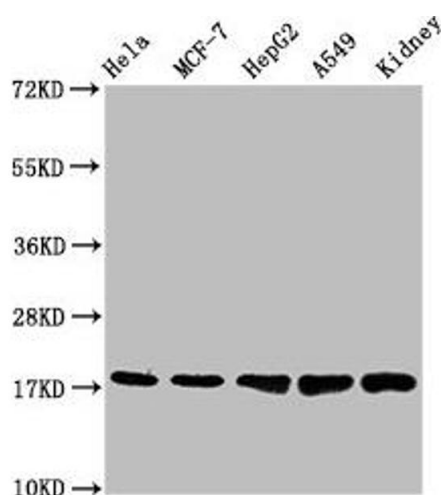
## Handling

Format:	Liquid
Buffer:	Rabbit IgG in phosphate buffered saline , pH 7.4, 150 mM NaCl, 0.02 % sodium azide and 50 % glycerol.
Preservative:	Sodium azide
Precaution of Use:	This product contains Sodium azide: a POISONOUS AND HAZARDOUS SUBSTANCE which should be handled by trained staff only.
Storage:	-20 °C,-80 °C
Storage Comment:	Upon receipt, store at -20°C or -80°C. Avoid repeated freeze.



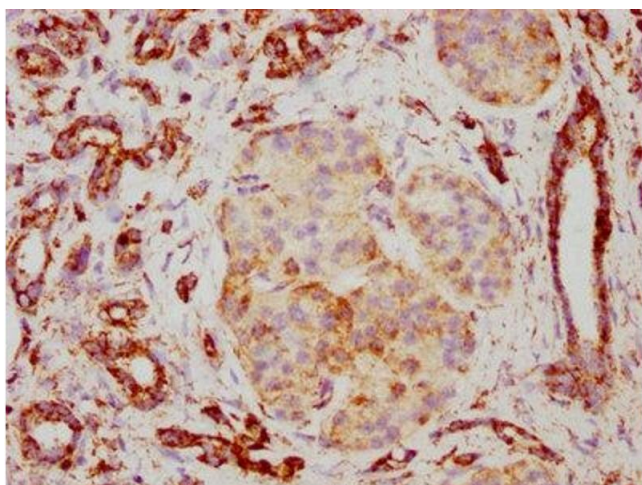
### Flow Cytometry

**Image 1.** Overlay histogram showing HepG2 cells stained with ABIN7127858 (red line) at 1:50. The cells were fixed with 70 % Ethylalcohol (18h) and then permeabilized with 0.3 % Triton X-100 for 2 min. The cells were then incubated in 1x PBS /10 % normal goat serum to block non-specific protein-protein interactions followed by primary antibody for 1 h at 4 °C. The secondary antibody used was FITC goat anti-rabbit IgG (H+L) at 1/200 dilution for 1 h at 4 °C. Control antibody (green line) was used under the same conditions. Acquisition of >10,000 events was performed.



### Western Blotting

**Image 2.** Western Blot Positive WB detected in: HeLa whole cell lysate, MCF-7 whole cell lysate, HepG2 whole cell lysate, A549 whole cell lysate, Mouse kidney tissue. All lanes: PBR antibody at 1.2 µg/mL. Secondary Goat polyclonal to rabbit IgG at 1/50000 dilution. Predicted band size: 19, 11 KDa. Observed band size: 19 KDa.



### Immunohistochemistry

**Image 3.** IHC image of ABIN7127858 diluted at 1:117 and staining in paraffin-embedded human pancreatic cancer performed on a Leica Bond™ system. After dewaxing and hydration, antigen retrieval was mediated by high pressure in a citrate buffer (pH 6.0). Section was blocked with 10 % normal goat serum 30 min at RT. Then primary antibody (1 % BSA) was incubated at 4 °C overnight. The primary is detected by a biotinylated secondary antibody and visualized using an HRP conjugated SP system.

Please check the [product details page](#) for more images. Overall 6 images are available for ABIN7127858.