

Datasheet for ABIN7127859

Recombinant anti-NKX2-1 antibody



[Go to Product page](#)

4 Images

Overview

Quantity:	100 µL
Target:	NKX2-1
Reactivity:	Human
Host:	Rabbit
Antibody Type:	Recombinant Antibody
Clonality:	Monoclonal
Conjugate:	This NKX2-1 antibody is un-conjugated
Application:	Western Blotting (WB), Flow Cytometry (FACS), ELISA, Immunohistochemistry (IHC)

Product Details

Immunogen:	A synthesized peptide derived from human TTF1
Clone:	6C11
Isotype:	IgG
Cross-Reactivity:	Human
Purification:	Affinity-chromatography

Target Details

Target:	NKX2-1
Alternative Name:	NKX2-1 (NKX2-1 Products)
Background:	Background: Transcription factor that binds and activates the promoter of thyroid specific

Target Details

genes such as thyroglobulin, thyroperoxidase, and thyrotropin receptor. Crucial in the maintenance of the thyroid differentiation phenotype. May play a role in lung development and surfactant homeostasis. Forms a regulatory loop with GRHL2 that coordinates lung epithelial cell morphogenesis and differentiation. Activates the transcription of GNRHR and plays a role in enhancing the circadian oscillation of its gene expression. Represses the transcription of the circadian transcriptional repressor NR1D1 (By similarity).

Aliases: Homeobox protein Nkx-2.1 (Homeobox protein NK-2 homolog A) (Thyroid nuclear factor 1) (Thyroid transcription factor 1) (TTF-1) (Thyroid-specific enhancer-binding protein) (T/EBP), NKX2-1, NKX2A TITF1 TTF1

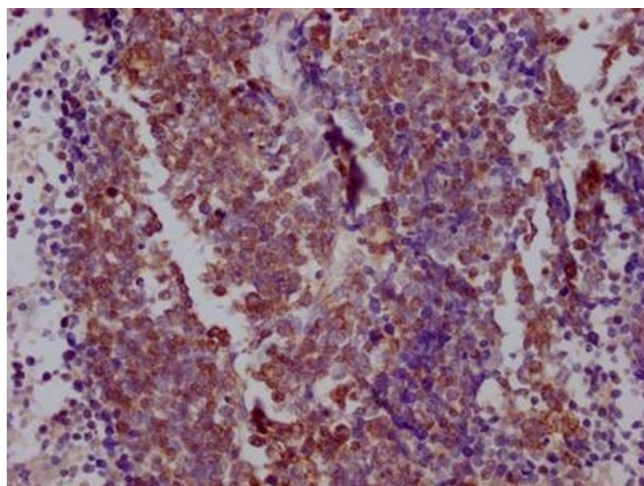
UniProt:	P43699
Pathways:	Intracellular Steroid Hormone Receptor Signaling Pathway , Regulation of Systemic Arterial Blood Pressure by Hormones , Cellular Glucan Metabolic Process , Feeding Behaviour

Application Details

Application Notes:	Recommended dilution: WB:1:500-1:5000, IHC:1:50-1:200, FC:1:20-1:200,
Restrictions:	For Research Use only

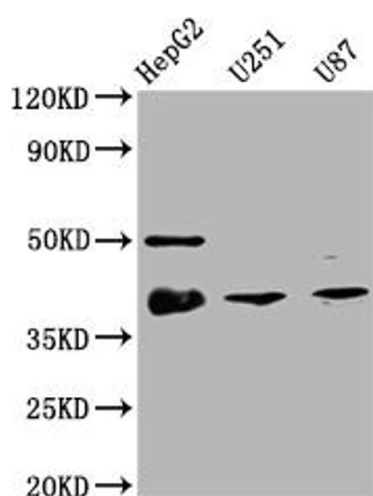
Handling

Format:	Liquid
Buffer:	Rabbit IgG in phosphate buffered saline, pH 7.4, 150 mM NaCl, 0.02 % sodium azide and 50 % glycerol.
Preservative:	Sodium azide
Precaution of Use:	This product contains Sodium azide: a POISONOUS AND HAZARDOUS SUBSTANCE which should be handled by trained staff only.
Storage:	-20 °C,-80 °C
Storage Comment:	Upon receipt, store at -20°C or -80°C. Avoid repeated freeze.



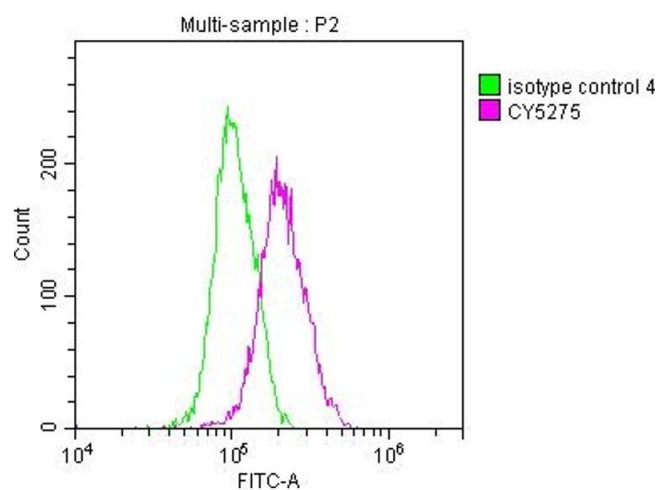
Immunohistochemistry

Image 1. IHC image of ABIN7127859 diluted at 1:100 and staining in paraffin-embedded human lung cancer performed on a Leica Bond™ system. After dewaxing and hydration, antigen retrieval was mediated by high pressure in a citrate buffer (pH 6.0). Section was blocked with 10 % normal goat serum 30 min at RT. Then primary antibody (1 % BSA) was incubated at 4 °C overnight. The primary is detected by a Goat anti-rabbit IgG polymer labeled by HRP and visualized using 0.05 % DAB.



Western Blotting

Image 2. Western Blot Positive WB detected in: HepG2 whole cell lysate, U251 whole cell lysate, U87 whole cell lysate. All lanes: TTF1 antibody at 1:2000. Secondary Goat polyclonal to rabbit IgG at 1/50000 dilution. Predicted band size: 39 kDa. Observed band size: 39 kDa.



Flow Cytometry

Image 3. Overlay histogram showing A549 cells stained with ABIN7127859 (red line) at 1:50. The cells were fixed with 70 % Ethylalcohol (18h) and then incubated in 10 % normal goat serum to block non-specific protein-protein interactions followed by the antibody (1 µg/1*10⁶ cells) for 1 h at 4 °C. The secondary antibody used was FITC-conjugated goat anti-rabbit IgG (H+L) at 1/200 dilution for 30 min at 4 °C. Control antibody (green line) was Rabbit IgG (1 µg/1*10⁶ cells) used under the same conditions. Acquisition of >10,000 events was performed.

Please check the [product details page](#) for more images. Overall 4 images are available for ABIN7127859.