



Datasheet for ABIN7127861  
**anti-TUBA1A antibody**



[Go to Product page](#)

6 Images

### Overview

Quantity:	100 µL
Target:	TUBA1A (Tuba1a)
Reactivity:	Human
Host:	Mouse
Clonality:	Monoclonal
Conjugate:	This TUBA1A antibody is un-conjugated
Application:	Western Blotting (WB), ELISA, Immunohistochemistry (IHC), Immunofluorescence (IF), Immunoprecipitation (IP), Flow Cytometry (FACS)

### Product Details

Immunogen:	A synthesized peptide derived from human Tubulin alpha-1A chain (297-309)
Clone:	7E5C12
Isotype:	IgG2a
Cross-Reactivity:	Human, Mouse, Rabbit, Rat
Purification:	Protein A purified

### Target Details

Target:	TUBA1A (Tuba1a)
Alternative Name:	TUBA1A ( <a href="#">Tuba1a Products</a> )
Background:	Background: Tubulin is the major constituent of microtubules. It binds two moles of GTP, one at

## Target Details

an exchangeable site on the beta chain and one at a non-exchangeable site on the alpha chain.

Aliases: Tubulin alpha-1A chain

UniProt: [Q71U36](#)

Pathways: [Microtubule Dynamics, M Phase](#)

## Application Details

Application Notes: Recommended dilution: WB: 1:20000-1:320000, IHC: 1:100-1:300, IF: 1:50-1:200, FC: 1:100-1:300, IP: 1 µg-5 µg,

Restrictions: For Research Use only

## Handling

Format: Liquid

Buffer: Preservative: 0.03 % Proclin 300  
Constituents: 50 % Glycerol, 0.01M PBS, PH 7.4

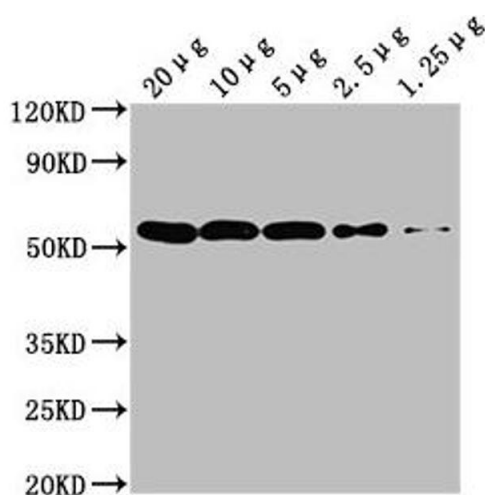
Preservative: ProClin

Precaution of Use: This product contains ProClin: a POISONOUS AND HAZARDOUS SUBSTANCE which should be handled by trained staff only.

Storage: -20 °C,-80 °C

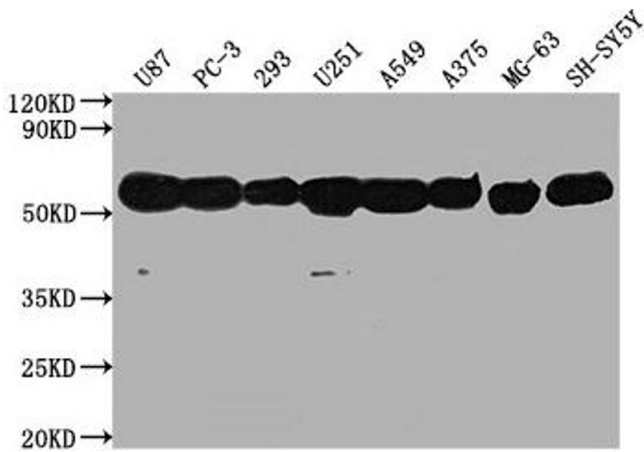
Storage Comment: Upon receipt, store at -20°C or -80°C. Avoid repeated freeze.

## Images



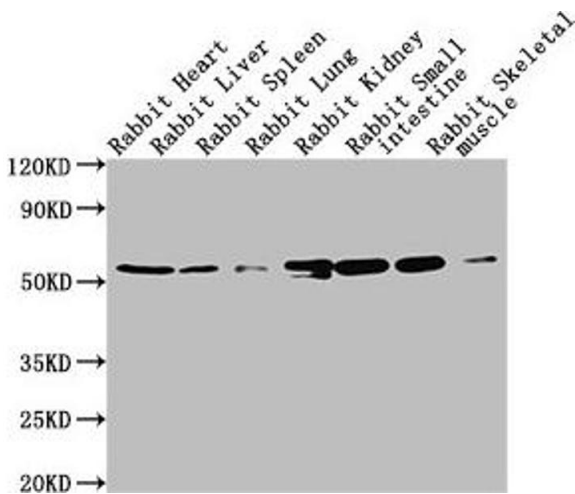
### Western Blotting

**Image 1.** Western Blot Positive WB detected in: HeLa whole cell lysate at 20 µg, 10 µg, 5 µg, 2.5 µg, 1.25 µg All lanes: TUBA1A antibody at 1:5000 Secondary Goat polyclonal to Mouse IgG at 1/10000 dilution Predicted band size: 52 kDa Observed band size: 52 kDa



### Western Blotting

**Image 2.** Western Blot Positive WB detected in: U87 whole cell lysate, PC-3 whole cell lysate, 293 whole cell lysate, U251 whole cell lysate, A549 whole cell lysate, A375 whole cell lysate, MG-63 whole cell lysate, SH-SY5Y whole cell lysate, All lanes: TUBA1A antibody at 1:5000 Secondary Goat polyclonal to Mouse IgG at 1/10000 dilution Predicted band size: 52 kDa Observed band size: 52 kDa



### Western Blotting

**Image 3.** Western Blot Positive WB detected in: Rabbit heart tissue, Rabbit liver tissue, Rabbit spleen tissue, Rabbit lung tissue, Rabbit kidney tissue, Rabbit small intestine tissue, Rabbit skeletal muscle tissue All lanes: TUBA1A antibody at 1:5000 Secondary Goat polyclonal to Mouse IgG at 1/10000 dilution Predicted band size: 52 kDa Observed band size: 52 kDa

Please check the [product details page](#) for more images. Overall 6 images are available for ABIN7127861.