

Datasheet for ABIN7127919

anti-Beta Lactoglobulin (LGB) antibody



[Go to Product page](#)

1 Image

Overview

Quantity:	100 µg
Target:	Beta Lactoglobulin (LGB)
Reactivity:	Cow
Host:	Rabbit
Clonality:	Polyclonal
Conjugate:	Un-conjugated
Application:	Western Blotting (WB), ELISA

Product Details

Immunogen:	Bovine milk Beta-lactoglobulin (Native Protein)
Isotype:	IgG
Cross-Reactivity:	Cow
Purification:	>95%, Protein G purified

Target Details

Target:	Beta Lactoglobulin (LGB)
Alternative Name:	LGB (LGB Products)
Background:	Beta lactoglobulin B antibody, Beta-lactoglobulin antibody, Beta-LG antibody, BLG antibody, LACB_BOVIN antibody, LGB antibody
UniProt:	P02754

Application Details

Application Notes: Recommended dilution: WB:1:1000-1:5000,

Restrictions: For Research Use only

Handling

Format: Liquid

Buffer: Preservative: 0.03 % Proclin 300
Constituents: 50 % Glycerol, 0.01M PBS, PH 7.4

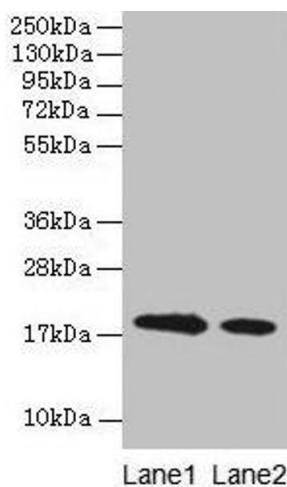
Preservative: ProClin

Precaution of Use: This product contains ProClin: a POISONOUS AND HAZARDOUS SUBSTANCE which should be handled by trained staff only.

Storage: -20 °C,-80 °C

Storage Comment: Upon receipt, store at -20°C or -80°C. Avoid repeated freeze.

Images



Western Blotting

Image 1. Western blot All lanes: Bovine milk Beta-lactoglobulin antibody at 2 µg/mL Lane 1: Bovine milk Beta-lactoglobulin at 0.1 mg/mL Lane 2: Bovine milk Beta-lactoglobulin at 10 µg/mL Secondary Goat polyclonal to rabbit IgG at 1/15000 dilution Predicted band size: 18 kDa Observed band size: 18 kDa