

Datasheet for ABIN7127958  
**anti-CENPM antibody**



[Go to Product page](#)

2 Images

Overview

Quantity:	100 µL
Target:	CENPM
Reactivity:	Human
Host:	Rabbit
Clonality:	Polyclonal
Conjugate:	This CENPM antibody is un-conjugated
Application:	ELISA, Immunohistochemistry (IHC)

Product Details

Immunogen:	Full length fusion protein
Isotype:	IgG
Cross-Reactivity:	Human
Purification:	Antigen affinity purification

Target Details

Target:	CENPM
Alternative Name:	CENPM ( <a href="#">CENPM Products</a> )
Background:	Background: The centromere is a specialized chromatin domain, present throughout the cell cycle, that acts as a platform on which the transient assembly of the kinetochore occurs during mitosis. All active centromeres are characterized by the presence of long arrays of nucleosomes in which CENPA (MIM 117139) replaces histone H3 (see MIM 601128). CENPM is

## Target Details

an additional factor required for centromere assembly (Foltz et al., 2006 [PubMed 16622419]).  
Aliases: CENPM antibody, C22orf18 antibody, ICEN39 antibody, PANE1Centromere protein M antibody, CENP-M antibody, Interphase centromere complex protein 39 antibody, Proliferation-associated nuclear element protein 1 antibody

UniProt: [Q9NSP4](#)

## Application Details

Application Notes: ELISA:1:2000-1:5000, IHC:1:25-1:100,

Restrictions: For Research Use only

## Handling

Format: Liquid

Buffer: -20 °C, pH 7.4 PBS, 0.05 % Sodium azide, 40 % Glycerol

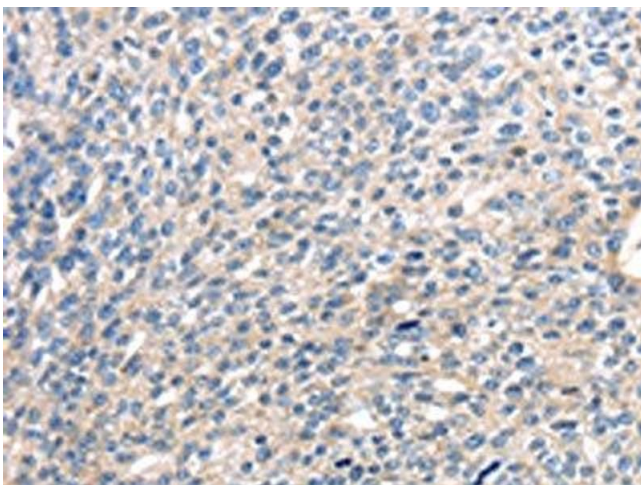
Preservative: Sodium azide

Precaution of Use: This product contains Sodium azide: a POISONOUS AND HAZARDOUS SUBSTANCE which should be handled by trained staff only.

Storage: -20 °C,-80 °C

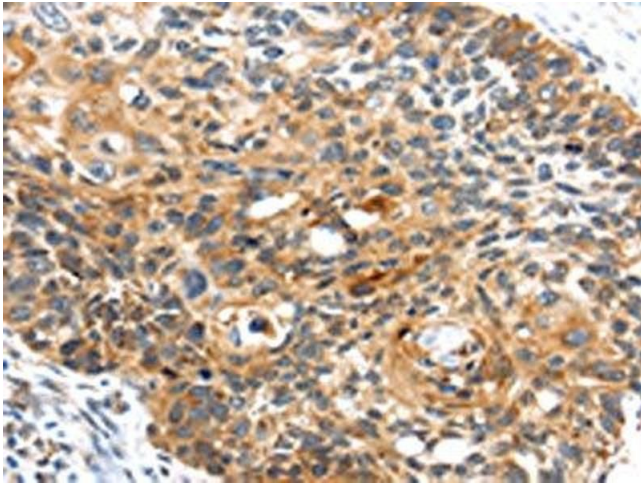
Storage Comment: Upon receipt, store at -20°C or -80°C. Avoid repeated freeze.

## Images



### Immunohistochemistry

**Image 1.** The image on the left is immunohistochemistry of paraffin-embedded Human breast cancer tissue using ABIN7127958(CENPM Antibody) at dilution 1/30, on the right is treated with fusion protein. (Original magnification: x200)



### Immunohistochemistry

**Image 2.** The image on the left is immunohistochemistry of paraffin-embedded Human esophagus cancer tissue using ABIN7127958(CENPM Antibody) at dilution 1/30, on the right is treated with fusion protein. (Original magnification: x200)