



Datasheet for ABIN7127988 anti-PPIL1 antibody



[Go to Product page](#)

2 Images

Overview

Quantity:	100 µL
Target:	PPIL1
Reactivity:	Human
Host:	Rabbit
Clonality:	Polyclonal
Conjugate:	This PPIL1 antibody is un-conjugated
Application:	ELISA, Immunohistochemistry (IHC)

Product Details

Immunogen:	Full length fusion protein
Isotype:	IgG
Cross-Reactivity:	Human, Mouse
Purification:	Antigen affinity purification

Target Details

Target:	PPIL1
Alternative Name:	PPIL1 (PPIL1 Products)
Background:	Background: This gene is a member of the cyclophilin family of peptidylprolyl isomerases (PPIases). The cyclophilins are a highly conserved, ubiquitous family, members of which play an important role in protein folding, immunosuppression by cyclosporin A, and infection of HIV-1 virions. Based on similarity to other PPIases, this protein could accelerate the folding of

Target Details

proteins and might catalyze the cis-trans isomerization of proline imidic peptide bonds in oligopeptides.

Aliases: CGI 124 antibody, CGI-124 antibody, CGI124 antibody, Cyclophilin related gene 1 antibody, cyclophilin-related gene 1 antibody, cyclophilinrelated gene 1 antibody, CYPL1 antibody, hCyPX antibody, MGC678 antibody, peptidyl-prolyl cis-trans isomerase antibody, Peptidyl-prolyl cis-trans isomerase-like 1 antibody, Peptidylprolyl isomerase (cyclophilin) like 1 antibody, peptidylprolyl isomerase (cyclophilin)-like 1 antibody, peptidylprolyl isomerase (cyclophilin)like 1 antibody, peptidylprolyl isomerase (cyclophilin)like1 antibody, peptidylprolyl isomerase like 1 antibody, PPlase antibody, PPIL1 antibody, PPIL1_HUMAN antibody, rotamase antibody, Rotamase PPIL1 antibody

UniProt: [Q9Y3C6](#)

Application Details

Application Notes: ELISA:1:2000-1:5000, IHC:1:25-1:100,

Restrictions: For Research Use only

Handling

Format: Liquid

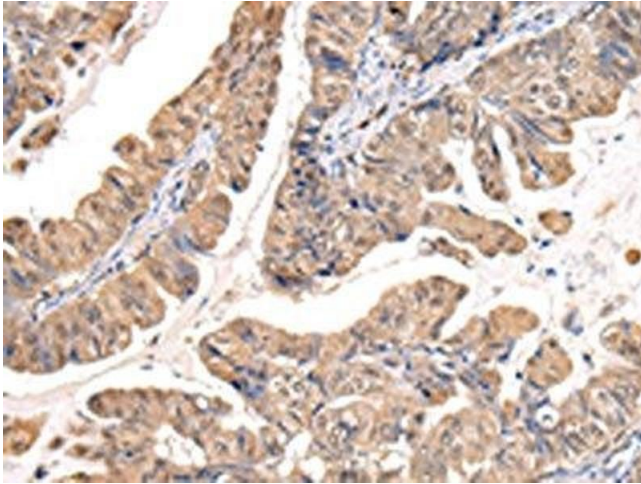
Buffer: -20 °C, pH 7.4 PBS, 0.05 % Sodium azide, 40 % Glycerol

Preservative: Sodium azide

Precaution of Use: This product contains Sodium azide: a POISONOUS AND HAZARDOUS SUBSTANCE which should be handled by trained staff only.

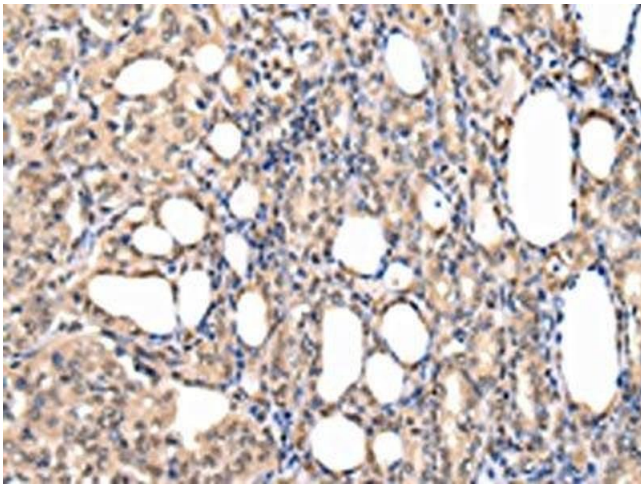
Storage: -20 °C,-80 °C

Storage Comment: Upon receipt, store at -20°C or -80°C. Avoid repeated freeze.



Immunohistochemistry

Image 1. The image on the left is immunohistochemistry of paraffin-embedded Human esophagus cancer tissue using ABIN7127988(PPIL1 Antibody) at dilution 1/30, on the right is treated with fusion protein. (Original magnification: x200)



Immunohistochemistry

Image 2. The image on the left is immunohistochemistry of paraffin-embedded Human thyroid cancer tissue using ABIN7127988(PPIL1 Antibody) at dilution 1/30, on the right is treated with fusion protein. (Original magnification: x200)