



[Go to Product page](#)

Datasheet for ABIN7128011
anti-SERPINA7 antibody

2 Images

Overview

Quantity:	100 µL
Target:	SERPINA7
Reactivity:	Human
Host:	Rabbit
Clonality:	Polyclonal
Conjugate:	This SERPINA7 antibody is un-conjugated
Application:	Immunohistochemistry (IHC), ELISA

Product Details

Immunogen:	Full length fusion protein
Isotype:	IgG
Cross-Reactivity:	Human
Purification:	Antigen affinity purification

Target Details

Target:	SERPINA7
Alternative Name:	SERPINA7 (SERPINA7 Products)
Background:	Background: There are three proteins including thyroxine-binding globulin (TBG), transthyretin and albumin responsible for carrying the thyroid hormones thyroxine (T4) and 3,5,3'-triiodothyronine (T3) in the bloodstream. This gene encodes the major thyroid hormone transport protein, TBG, in serum. It belongs to the serpin family in genomics, but the protein has

Target Details

no inhibitory function like many other members of the serpin family. Mutations in this gene result in TGB deficiency, which has been classified as partial deficiency, complete deficiency, and excess, based on the level of serum TBG. Alternatively spliced transcript variants encoding different isoforms have been found, but the full-length nature of these variants has not been determined.

Aliases: Serine (or cysteine) proteinase inhibitor clade A (alpha 1 antiproteinase antitrypsin) member 7 antibody, Serpin A7 antibody, Serpin peptidase inhibitor clade A (alpha 1 antiproteinase antitrypsin) member 7 antibody, Serpin peptidase inhibitor, clade A, member 7 antibody, Serpina7 antibody, T4 binding globulin antibody, TBG antibody, TBG, serum antibody, THBG_HUMAN antibody, Thyroxin binding globulin antibody, Thyroxine binding globulin antibody, Thyroxine-binding globulin antibody, Thyroxine-binding globulin od serum antibody

UniProt: [P05543](#)

Pathways: [Hormone Transport](#)

Application Details

Application Notes: ELISA:1:2000-1:5000, IHC:1:25-1:100,

Restrictions: For Research Use only

Handling

Format: Liquid

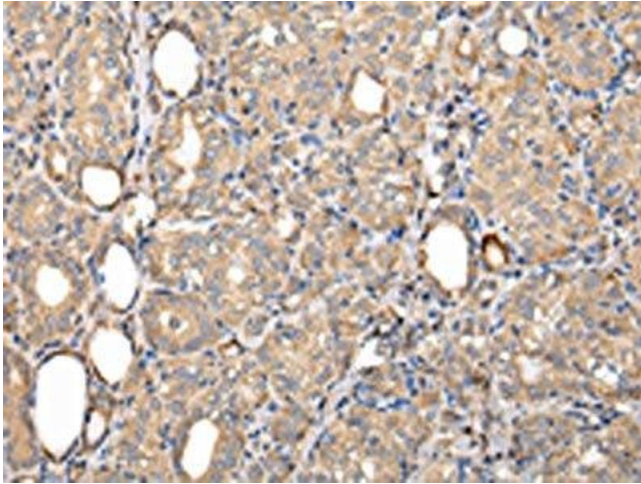
Buffer: -20 °C, pH 7.4 PBS, 0.05 % Sodium azide, 40 % Glycerol

Preservative: Sodium azide

Precaution of Use: This product contains Sodium azide: a POISONOUS AND HAZARDOUS SUBSTANCE which should be handled by trained staff only.

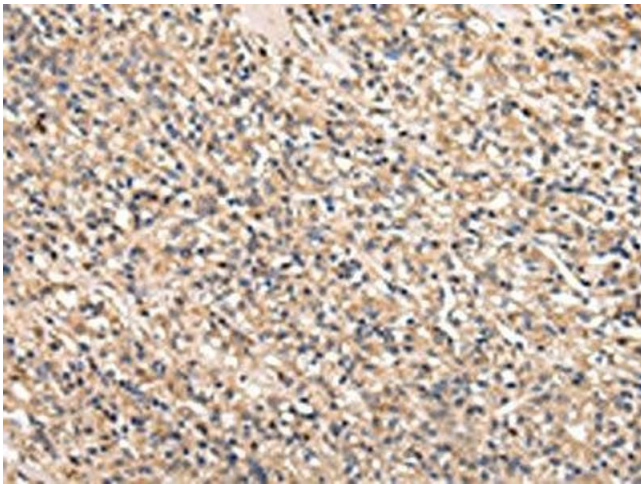
Storage: -20 °C,-80 °C

Storage Comment: Upon receipt, store at -20°C or -80°C. Avoid repeated freeze.



Immunohistochemistry

Image 1. The image on the left is immunohistochemistry of paraffin-embedded Human thyroid cancer tissue using ABIN7128011(SERPINA7 Antibody) at dilution 1/25, on the right is treated with fusion protein. (Original magnification: x200)



Immunohistochemistry

Image 2. The image on the left is immunohistochemistry of paraffin-embedded Human prostate cancer tissue using ABIN7128011(SERPINA7 Antibody) at dilution 1/25, on the right is treated with fusion protein. (Original magnification: x200)