



[Go to Product page](#)

Datasheet for ABIN7128031  
**anti-THAP2 antibody**

2 Images

Overview

Quantity:	100 µL
Target:	THAP2
Reactivity:	Human
Host:	Rabbit
Clonality:	Polyclonal
Conjugate:	This THAP2 antibody is un-conjugated
Application:	ELISA, Immunohistochemistry (IHC)

Product Details

Immunogen:	Full length fusion protein
Isotype:	IgG
Cross-Reactivity:	Human, Mouse
Purification:	Antigen affinity purification

Target Details

Target:	THAP2
Alternative Name:	THAP2 ( <a href="#">THAP2 Products</a> )
Background:	Background: THAP2, also named as THAP domain-containing protein 2, is a 228 amino acid protein, which contains one THAP-type zinc finger. Members of the THAP (thanatos-associated protein) family of proteins contain a well conserved DNA-binding domain known as the THAP-type zinc finger motif. Proteins containing the THAP-type zinc finger motif are commonly

## Target Details

involved in transcriptional regulation, cell-cycle control, apoptosis and chromatin modification

Aliases: THAP2 antibody, THAP domain-containing protein 2 antibody

UniProt: [Q9H0W7](#)

## Application Details

Application Notes: ELISA:1:2000-1:5000, IHC:1:25-1:100,

Restrictions: For Research Use only

## Handling

Format: Liquid

Buffer: -20 °C, pH 7.4 PBS, 0.05 % Sodium azide, 40 % Glycerol

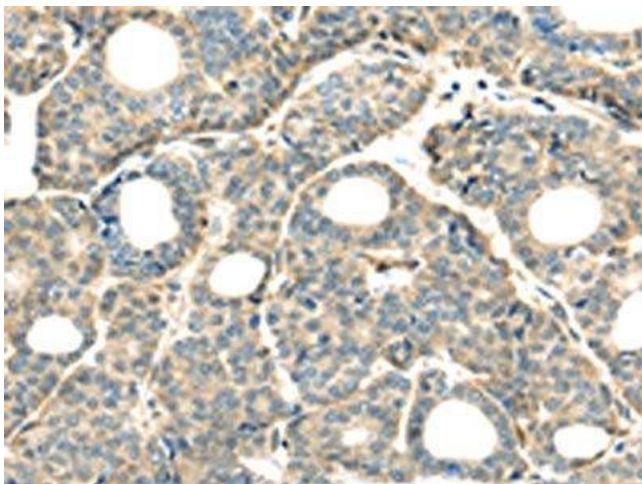
Preservative: Sodium azide

Precaution of Use: This product contains Sodium azide: a POISONOUS AND HAZARDOUS SUBSTANCE which should be handled by trained staff only.

Storage: -20 °C,-80 °C

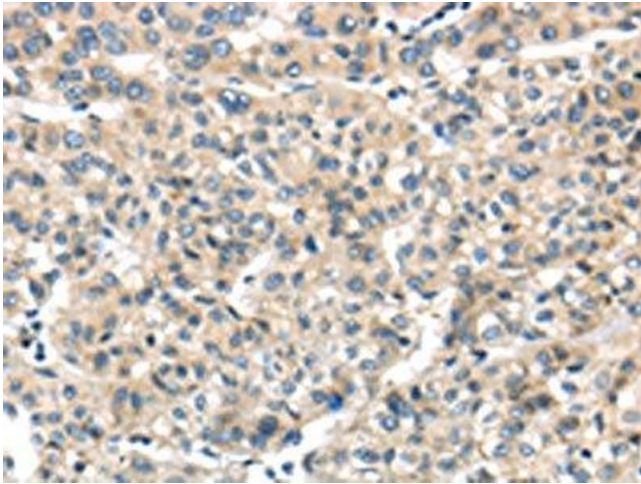
Storage Comment: Upon receipt, store at -20°C or -80°C. Avoid repeated freeze.

## Images



### Immunohistochemistry

**Image 1.** The image on the left is immunohistochemistry of paraffin-embedded Human thyroid cancer tissue using ABIN7128031 (THAP2 Antibody) at dilution 1/20, on the right is treated with fusion protein. (Original magnification: x200)



### Immunohistochemistry

**Image 2.** The image on the left is immunohistochemistry of paraffin-embedded Human liver cancer tissue using ABIN7128031 (THAP2 Antibody) at dilution 1/20, on the right is treated with fusion protein. (Original magnification: x200)