

Datasheet for ABIN7128053 **anti-TXNDC17 antibody**



[Go to Product page](#)

1 Image

Overview

| | |
|--------------|--|
| Quantity: | 100 µL |
| Target: | TXNDC17 |
| Reactivity: | Human |
| Host: | Rabbit |
| Clonality: | Polyclonal |
| Conjugate: | This TXNDC17 antibody is un-conjugated |
| Application: | ELISA, Immunohistochemistry (IHC) |

Product Details

| | |
|-------------------|-------------------------------|
| Immunogen: | Full length fusion protein |
| Isotype: | IgG |
| Cross-Reactivity: | Human, Mouse |
| Purification: | Antigen affinity purification |

Target Details

| | |
|-------------------|---|
| Target: | TXNDC17 |
| Alternative Name: | TXNDC17 (TXNDC17 Products) |
| Background: | Background: Disulfide reductase. May participate in various redox reactions through the reversible oxidation of its active center dithiol to a disulfide and catalyze dithiol-disulfide exchange reactions. Modulates TNF-alpha signaling and NF-kappa-B activation. Has peroxidase activity and may contribute to the elimination of cellular hydrogen peroxide. |

Target Details

Aliases: TXNDC17 antibody, TXNL5Thioredoxin domain-containing protein 17 antibody, 14 kDa thioredoxin-related protein antibody, TRP14 antibody, Protein 42-9-9 antibody, Thioredoxin-like protein 5 antibody

UniProt: [Q9BRA2](#)

Application Details

Application Notes: ELISA:1:2000-1:5000, IHC:1:25-1:100,

Restrictions: For Research Use only

Handling

Format: Liquid

Buffer: -20 °C, pH 7.4 PBS, 0.05 % Sodium azide, 40 % Glycerol

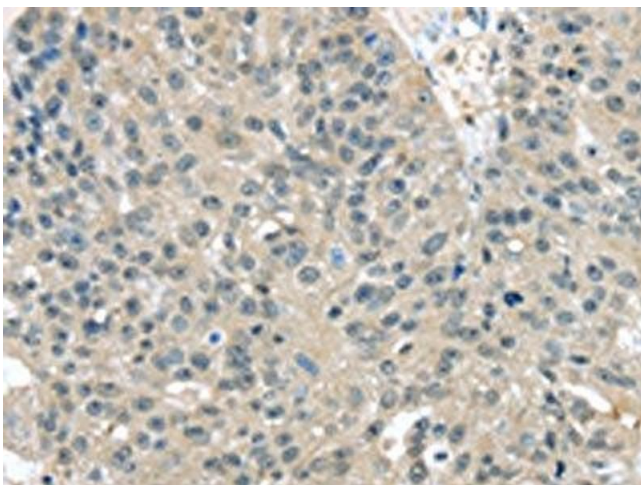
Preservative: Sodium azide

Precaution of Use: This product contains Sodium azide: a POISONOUS AND HAZARDOUS SUBSTANCE which should be handled by trained staff only.

Storage: -20 °C,-80 °C

Storage Comment: Upon receipt, store at -20°C or -80°C. Avoid repeated freeze.

Images



Immunohistochemistry

Image 1. The image on the left is immunohistochemistry of paraffin-embedded Human breast cancer tissue using ABIN7128053(TXNDC17 Antibody) at dilution 1/30, on the right is treated with fusion protein. (Original magnification: x200)