

Datasheet for ABIN7128055

anti-UBE2B antibody[Go to Product page](#)**1** Image

Overview

Quantity:	100 µL
Target:	UBE2B
Reactivity:	Human
Host:	Rabbit
Clonality:	Polyclonal
Conjugate:	This UBE2B antibody is un-conjugated
Application:	Immunohistochemistry (IHC), ELISA

Product Details

Immunogen:	Full length fusion protein
Isotype:	IgG
Cross-Reactivity:	Human, Mouse, Rat
Purification:	Antigen affinity purification

Target Details

Target:	UBE2B
Alternative Name:	UBE2B (UBE2B Products)
Target Type:	Viral Protein
Background:	Background: The modification of proteins with ubiquitin is an important cellular mechanism for targeting abnormal or short-lived proteins for degradation. Ubiquitination involves at least three

Target Details

classes of enzymes: ubiquitin-activating enzymes, or E1s, ubiquitin-conjugating enzymes, or E2s, and ubiquitin-protein ligases, or E3s. This gene encodes a member of the E2 ubiquitin-conjugating enzyme family. This enzyme is required for post-replicative DNA damage repair. Its protein sequence is 100 % identical to the mouse, rat, and rabbit homologs, which indicates that this enzyme is highly conserved in eukaryotic evolution.

Aliases: E2 17 kDa antibody, E2 protein antibody, hHR6B antibody, HR6B antibody, RAD6 homolog B antibody, RAD6B antibody, UBC2 antibody, UBE2B antibody, UBE2B_HUMAN antibody, Ubiquitin carrier protein B antibody, Ubiquitin conjugating enzyme E2 B antibody, Ubiquitin conjugating enzyme E2B (RAD6 homolog) antibody, Ubiquitin conjugating enzyme E2B antibody, Ubiquitin protein ligase B antibody, Ubiquitin-conjugating enzyme E2 17 kDa antibody, Ubiquitin-conjugating enzyme E2 B antibody, Ubiquitin-conjugating enzyme E2-17 kDa antibody, Ubiquitin-protein ligase B antibody

UniProt: [P63146](#)

Application Details

Application Notes: ELISA:1:2000-1:5000, IHC:1:25-1:100,

Restrictions: For Research Use only

Handling

Format: Liquid

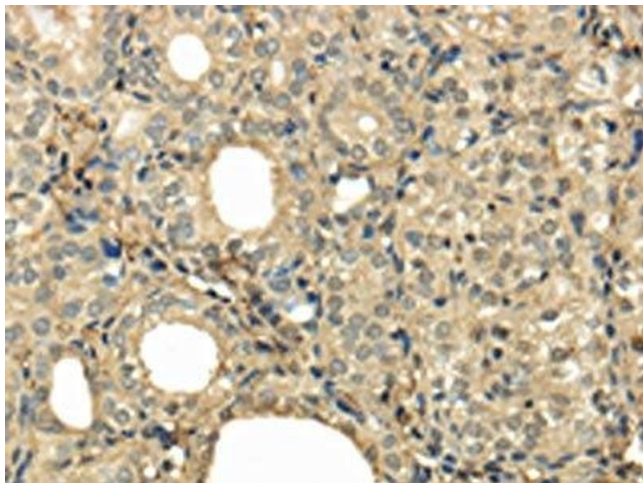
Buffer: -20 °C, pH 7.4 PBS, 0.05 % Sodium azide, 40 % Glycerol

Preservative: Sodium azide

Precaution of Use: This product contains Sodium azide: a POISONOUS AND HAZARDOUS SUBSTANCE which should be handled by trained staff only.

Storage: -20 °C, -80 °C

Storage Comment: Upon receipt, store at -20°C or -80°C. Avoid repeated freeze.



Immunohistochemistry

Image 1. The image on the left is immunohistochemistry of paraffin-embedded Human thyroid cancer tissue using ABIN7128055(UBE2B Antibody) at dilution 1/30, on the right is treated with fusion protein. (Original magnification: x200)