

Datasheet for ABIN7128060

anti-UBL4B antibody**2** Images[Go to Product page](#)

Overview

Quantity:	100 µL
Target:	UBL4B
Reactivity:	Human
Host:	Rabbit
Clonality:	Polyclonal
Conjugate:	This UBL4B antibody is un-conjugated
Application:	ELISA, Immunohistochemistry (IHC)

Product Details

Immunogen:	Full length fusion protein
Isotype:	IgG
Cross-Reactivity:	Human
Purification:	Antigen affinity purification

Target Details

Target:	UBL4B
Alternative Name:	UBL4B (UBL4B Products)
Background:	Background: Ubiquitin is a 77 amino acid protein that targets proteins for degradation by the 26S proteasome. Ubiquitin-like proteins are not directly involved in protein degradation, but appear to have many mechanistic similarities with the ubiquitin pathway. UBL4B (Ubiquitin-like protein 4B) is a 174 amino acid cytoplasmic protein that contains a ubiquitin-like domain.

Target Details

UBL4B likely arose by retroposition during mammalian evolution from UBL4A, an X-linked intron-bearing housekeeping gene. While UBL4A is highly conserved, UBL4B has undergone rapid evolution and may have evolved new functions. Expression of UBL4B is restricted to post-meiotic germ cells in testis and ovarian tissue, where it likely functions in post-translational protein modification.

Aliases: UBL4B antibody, Ubiquitin-like protein 4B antibody

UniProt: [Q8N7F7](#)

Application Details

Application Notes: ELISA:1:2000-1:5000, IHC:1:25-1:100,

Restrictions: For Research Use only

Handling

Format: Liquid

Buffer: -20 °C, pH 7.4 PBS, 0.05 % Sodium azide, 40 % Glycerol

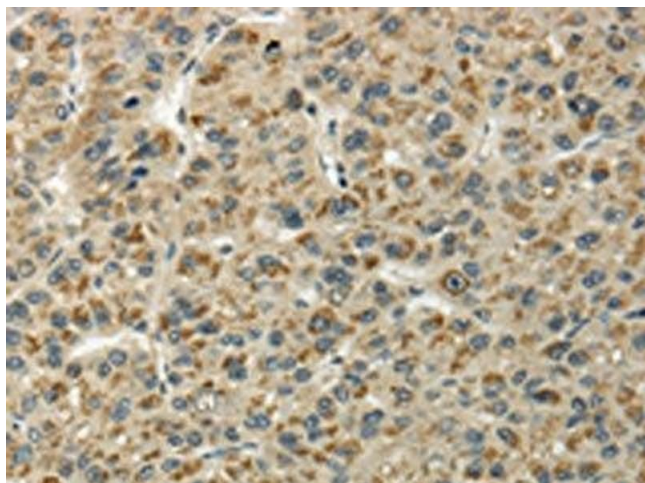
Preservative: Sodium azide

Precaution of Use: This product contains Sodium azide: a POISONOUS AND HAZARDOUS SUBSTANCE which should be handled by trained staff only.

Storage: -20 °C, -80 °C

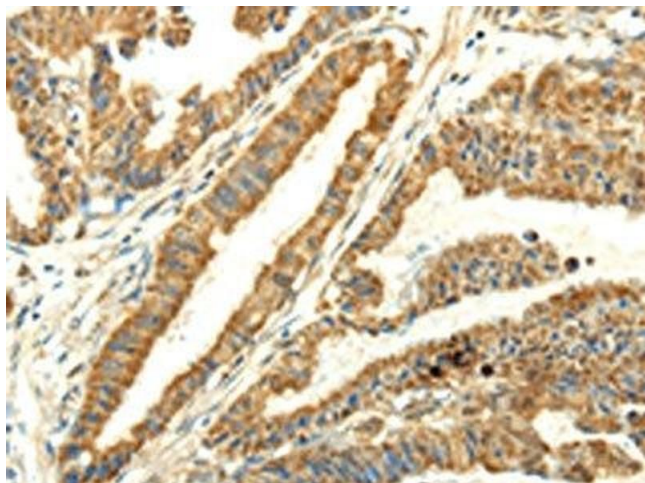
Storage Comment: Upon receipt, store at -20°C or -80°C. Avoid repeated freeze.

Images



Immunohistochemistry

Image 1. The image on the left is immunohistochemistry of paraffin-embedded Human liver cancer tissue using ABIN7128060(UBL4B Antibody) at dilution 1/25, on the right is treated with fusion protein. (Original magnification: x200)



Immunohistochemistry

Image 2. The image on the left is immunohistochemistry of paraffin-embedded Human esophagus cancer tissue using ABIN7128060(UBL4B Antibody) at dilution 1/25, on the right is treated with fusion protein. (Original magnification: x200)