

Datasheet for ABIN7128095

## anti-KIR2DL3 antibody (Internal Region)



[Go to Product page](#)

### 2 Images

#### Overview

Quantity:	100 µL
Target:	KIR2DL3
Binding Specificity:	Internal Region
Reactivity:	Human
Host:	Rabbit
Clonality:	Polyclonal
Conjugate:	This KIR2DL3 antibody is un-conjugated
Application:	ELISA, Immunohistochemistry (IHC)

#### Product Details

Immunogen:	Fusion protein corresponding to a region derived from internal residues of Human killer cell immunoglobulin-like receptor, two domains, long cytoplasmic tail, 3/1/4/ short cytoplasmic tail, 4
Isotype:	IgG
Cross-Reactivity:	Human, Mouse, Rat
Purification:	Antigen Affinity Purified

#### Target Details

Target:	KIR2DL3
Alternative Name:	KIR2DL3 ( <a href="#">KIR2DL3 Products</a> )

## Target Details

Background:	<p>Background: Killer cell immunoglobulin-like receptors (KIRs) are transmembrane glycoproteins expressed by natural killer cells and subsets of T cells. The KIR genes are polymorphic and highly homologous and they are found in a cluster on chromosome 19q13.4 within the 1 Mb leukocyte receptor complex (LRC). The gene content of the KIR gene cluster varies among haplotypes, although several framework" genes are found in all haplotypes (KIR3DL3, KIR3DP1, KIR3DL4, KIR3DL2). The KIR proteins are classified by the number of extracellular immunoglobulin domains (2D or 3D) and by whether they have a long (L) or short (S) cytoplasmic domain."</p> <p>Aliases: CD158 antigen like family member B2 antibody, CD158 antigen-like family member B2 antibody, CD158b antibody, CD158b2 antibody, GL183 antibody, KI2L3_HUMAN antibody, Killer cell immunoglobulin like receptor two domains long cytoplasmic tail 3 antibody, Killer cell immunoglobulin-like receptor 2DL3 antibody, Killer inhibitory receptor cl 2-3 antibody, Killer inhibitory receptor CL2 3 antibody, KIR 023GB antibody, KIR-023GB antibody, KIR-K7b antibody, KIR-K7c antibody, KIR023GB antibody, KIR2DL3 antibody, KIR2DS5 antibody, KIRCL23 antibody, MHC class I NK cell receptor antibody, Natural killer associated transcript 2 antibody, Natural killer cell inhibitory receptor KIR2DL3 antibody, Natural killer-associated transcript 2 antibody, NKAT antibody, NKAT-2 antibody, NKAT2 antibody, NKAT2a antibody, NKAT2b antibody, p58 antibody, p58 natural killer cell receptor clone CL 6 antibody, p58 natural killer cell receptor clone CL-6 antibody, p58 NK Receptor antibody, p58 NK receptor CL 6 antibody, p58 NK receptor CL-6 antibody, p58.2 MHC class I specific NK receptor antibody, p58.2 MHC class-I-specific NK receptor antibody</p>
-------------	--

UniProt:	<a href="#">P43628</a>
----------	------------------------

Pathways:	<a href="#">Cancer Immune Checkpoints</a>
-----------	---

## Application Details

Application Notes:	IHC:1:50-1:100,
Restrictions:	For Research Use only

## Handling

Format:	Liquid
Buffer:	Rabbit IgG in pH 7.3 PBS, 0.05 % Sodium azide, 50 % Glycerol.
Preservative:	Sodium azide
Precaution of Use:	This product contains Sodium azide: a POISONOUS AND HAZARDOUS SUBSTANCE which

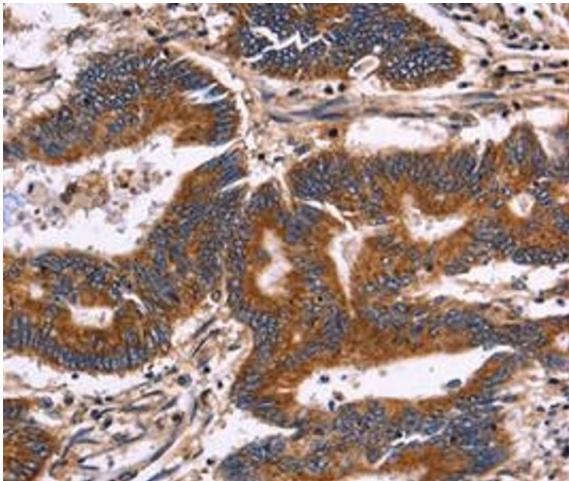
Handling

should be handled by trained staff only.

Storage: -20 °C,-80 °C

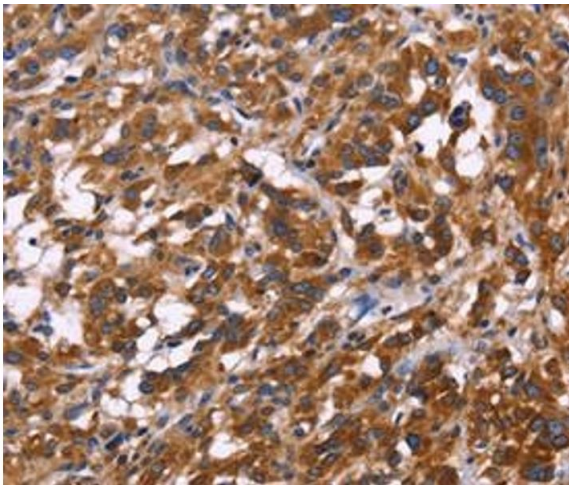
Storage Comment: Upon receipt, store at -20°C or -80°C. Avoid repeated freeze.

Images



Immunohistochemistry

**Image 1.** Immunohistochemical analysis of paraffin-embedded Human colon cancer tissue using at dilution 1/30.



Immunohistochemistry

**Image 2.** Immunohistochemical analysis of paraffin-embedded Human thyroid cancer tissue using at dilution 1/30.