

Datasheet for ABIN7128109  
**anti-AADACL2 antibody**



[Go to Product page](#)

2 Images

Overview

Quantity:	100 µL
Target:	AADACL2
Reactivity:	Human
Host:	Rabbit
Clonality:	Polyclonal
Conjugate:	This AADACL2 antibody is un-conjugated
Application:	ELISA, Immunohistochemistry (IHC)

Product Details

Immunogen:	Fusion protein of Human AADACL2
Isotype:	IgG
Cross-Reactivity:	Human
Purification:	Antigen affinity purification

Target Details

Target:	AADACL2
Alternative Name:	AADACL2 ( <a href="#">AADACL2 Products</a> )
Background:	Background: AADAC is a 45 kDa membrane-associated hydrolase highly expressed in the human liver that has been implicated in the hydrolysis of arylacetamide xenobiotics including flutamide and phenacetin.556-560AADAC is highly homologous to several related lipases, AADACL1, 2, and 4, the latter two of which remain completely unannotated. Overexpression of

## Target Details

AADAC in a rat hepatoma cell line produces changes in cellular TG levels, apolipoprotein B secretion, and fatty acid oxidation, but the mechanism for these effects remains unclear.<sup>561</sup> Candidate endogenous substrates, selective inhibitors, or knockout mice have not, to our knowledge, been described for AADAC or the related enzymes AADACL2 and AADACL4.

Aliases: AADACL2Arylacetylamide deacetylase-like 2 antibody, EC 3.1.1.- antibody

UniProt: [Q6P093](#)

## Application Details

Application Notes: ELISA:1:2000-1:5000, IHC:1:25-1:100,

Restrictions: For Research Use only

## Handling

Format: Liquid

Buffer: -20 °C, pH 7.4 PBS, 0.05 % Sodium azide, 40 % Glycerol

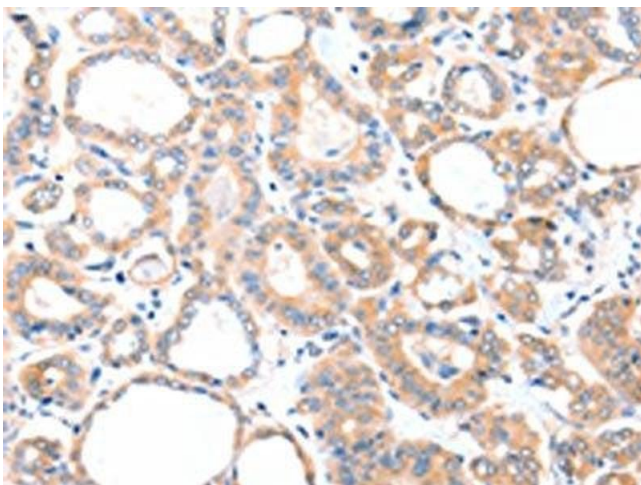
Preservative: Sodium azide

Precaution of Use: This product contains Sodium azide: a POISONOUS AND HAZARDOUS SUBSTANCE which should be handled by trained staff only.

Storage: -20 °C,-80 °C

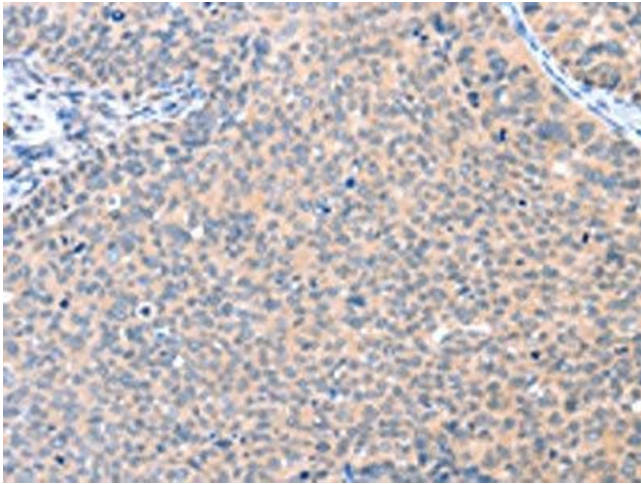
Storage Comment: Upon receipt, store at -20°C or -80°C. Avoid repeated freeze.

## Images



### Immunohistochemistry

**Image 1.** The image on the left is immunohistochemistry of paraffin-embedded Human thyroid cancer tissue using ABIN7128109(AADACL2 Antibody) at dilution 1/25, on the right is treated with fusion protein. (Original magnification: x200)



### Immunohistochemistry

**Image 2.** The image on the left is immunohistochemistry of paraffin-embedded Human cervical cancer tissue using ABIN7128109(AADA2L2 Antibody) at dilution 1/25, on the right is treated with fusion protein. (Original magnification: x200)