

Datasheet for ABIN7128119

anti-ABCB6 antibody

3 Images

[Go to Product page](#)

Overview

Quantity:	100 µL
Target:	ABCB6
Reactivity:	Human
Host:	Rabbit
Clonality:	Polyclonal
Conjugate:	This ABCB6 antibody is un-conjugated
Application:	Western Blotting (WB), ELISA, Immunohistochemistry (IHC)

Product Details

Immunogen:	Fusion protein of Human ABCB6
Isotype:	IgG
Cross-Reactivity:	Human, Mouse, Rat
Purification:	Antigen affinity purification

Target Details

Target:	ABCB6
Alternative Name:	ABCB6 (ABCB6 Products)
Background:	Background: The membrane-associated protein encoded by this gene is a member of the superfamily of ATP-binding cassette (ABC) transporters. ABC proteins transport various molecules across extra- and intra-cellular membranes. ABC genes are divided into seven distinct subfamilies (ABC1, MDR/TAP, MRP, ALD, OABP, GCN20, White). This protein is a

Target Details

member of the MDR/TAP subfamily. Members of the MDR/TAP subfamily are involved in multidrug resistance as well as antigen presentation. This half-transporter likely plays a role in mitochondrial function. Localized to 2q26, this gene is considered a candidate gene for lethal neonatal metabolic syndrome, a disorder of mitochondrial function.

Aliases: ABC antibody, ABC transporter umat antibody, ABC14 antibody, Abcb6 antibody, ABCB6_HUMAN antibody, ATP binding cassette sub family B member 6, mitochondrial precursor antibody, ATP binding cassette, sub family B (MDR/TAP), member 6 antibody, ATP-binding cassette half-transporter antibody, ATP-binding cassette sub-family B member 6 antibody, ATP-binding cassette sub-family B member 6, mitochondrial antibody, DUH3 antibody, LAN antibody, MCOPCB7 antibody, Mitochondrial ABC transporter 3 antibody, mitochondrial antibody, Mt ABC transporter 3 antibody, Mt-ABC transporter 3 antibody, MTABC3 antibody, P glycoprotein related protein antibody, P-glycoprotein-related protein antibody, PRP antibody, Ubiquitously expressed mammalian ABC half transporter antibody, Ubiquitously-expressed mammalian ABC half transporter antibody, UMAT antibody

UniProt: [Q9NP58](#)

Pathways: [Transition Metal Ion Homeostasis](#)

Application Details

Application Notes: ELISA:1:1000-1:2000, WB:1:200-1:1000, IHC:1:25-1:100,

Restrictions: For Research Use only

Handling

Format: Liquid

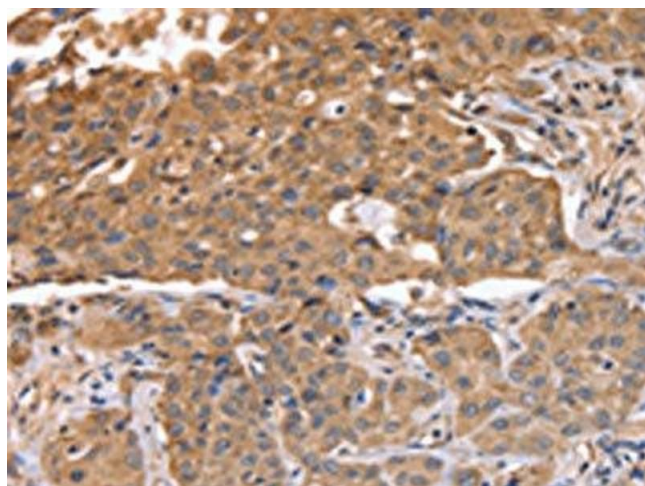
Buffer: -20 °C, pH 7.4 PBS, 0.05 % Sodium azide, 40 % Glycerol

Preservative: Sodium azide

Precaution of Use: This product contains Sodium azide: a POISONOUS AND HAZARDOUS SUBSTANCE which should be handled by trained staff only.

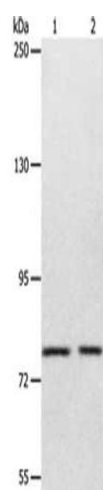
Storage: -20 °C,-80 °C

Storage Comment: Upon receipt, store at -20°C or -80°C. Avoid repeated freeze.



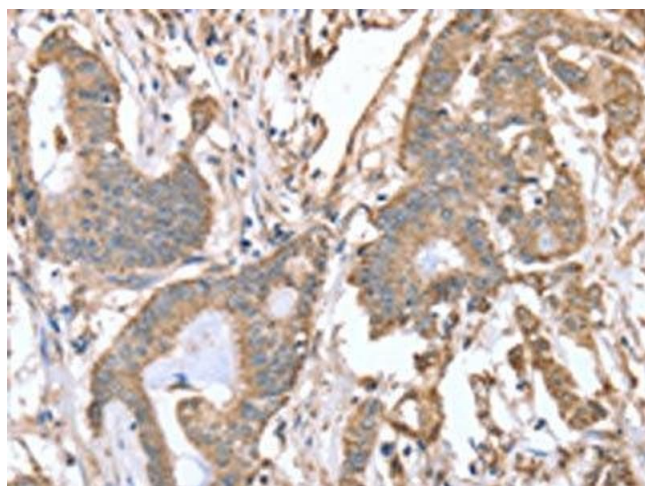
Immunohistochemistry

Image 1. The image on the left is immunohistochemistry of paraffin-embedded Human lung cancer tissue using ABIN7128119(ABCB6 Antibody) at dilution 1/15, on the right is treated with fusion protein. (Original magnification: x200)



Western Blotting

Image 2. Gel: 8 % SDS-PAGE, Lysate: 40 µg, Lane 1-2: Mouse liver tissue, SP20 cells, Primary antibody: ABIN7128119(ABCB6 Antibody) at dilution 1/320, Secondary antibody: Goat anti rabbit IgG at 1/8000 dilution, Exposure time: 1 minute



Immunohistochemistry

Image 3. The image on the left is immunohistochemistry of paraffin-embedded Human colon cancer tissue using ABIN7128119(ABCB6 Antibody) at dilution 1/15, on the right is treated with fusion protein. (Original magnification: x200)