

Datasheet for ABIN7128194  
**anti-Actin-Like 8 antibody**



[Go to Product page](#)

3 Images

## Overview

Quantity:	100 µL
Target:	Actin-Like 8 (ACTL8)
Reactivity:	Human
Host:	Rabbit
Clonality:	Polyclonal
Conjugate:	This Actin-Like 8 antibody is un-conjugated
Application:	Western Blotting (WB), ELISA, Immunohistochemistry (IHC)

## Product Details

Immunogen:	Fusion protein of Human ACTL8
Isotype:	IgG
Cross-Reactivity:	Human
Purification:	Antigen affinity purification

## Target Details

Target:	Actin-Like 8 (ACTL8)
Alternative Name:	ACTL8 ( <a href="#">ACTL8 Products</a> )
Background:	<p>Background: This protein belongs to the actin family. Actin-like 8 is a protein in humans that is encoded by the ACTL8 gene. The high levels expression in testis and pancreas and weak expression in placenta. The subcellular location of this protein in cytoplasm, cytoskeleton.</p> <p>Aliases: Actin like 8 antibody, Actin like protein 8 antibody, Actin like protein antibody, Actin-like</p>

## Target Details

protein 8 antibody, ACTL8 antibody, ACTL8\_HUMAN antibody, Cancer/testis antigen 57 antibody, CT57 antibody

UniProt: [Q9H568](#)

## Application Details

Application Notes: ELISA:1:2000-1:5000, WB:1:500-1:2000, IHC:1:15-1:50,

Restrictions: For Research Use only

## Handling

Format: Liquid

Buffer: -20 °C, pH 7.4 PBS, 0.05 % Sodium azide, 40 % Glycerol

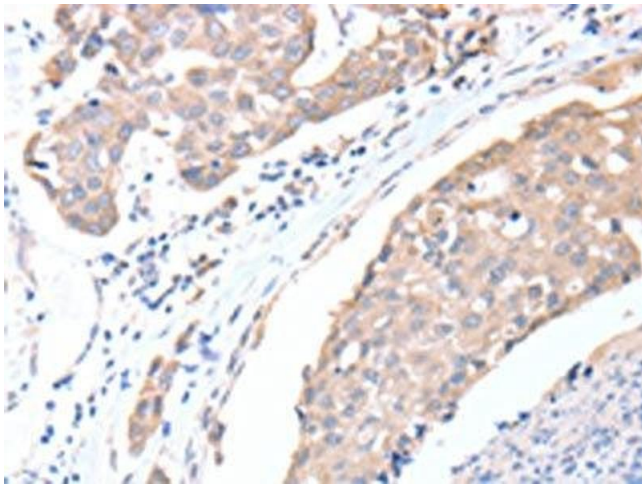
Preservative: Sodium azide

Precaution of Use: This product contains Sodium azide: a POISONOUS AND HAZARDOUS SUBSTANCE which should be handled by trained staff only.

Storage: -20 °C,-80 °C

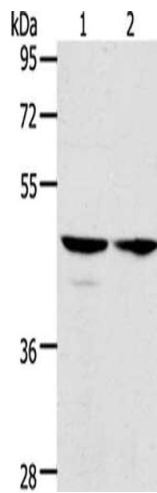
Storage Comment: Upon receipt, store at -20°C or -80°C. Avoid repeated freeze.

## Images



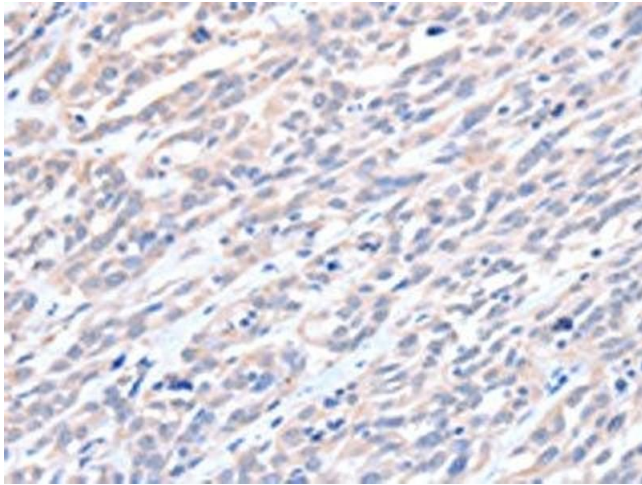
### Immunohistochemistry

**Image 1.** The image on the left is immunohistochemistry of paraffin-embedded Human breast cancer tissue using ABIN7128194(ACTL8 Antibody) at dilution 1/15, on the right is treated with fusion protein. (Original magnification: x200)



### Western Blotting

**Image 2.** Gel: 10 % SDS-PAGE, Lysate: 40 µg, Lane 1-2: HeLa cells, A549 cells, Primary antibody: ABIN7128194(CTL8 Antibody) at dilution 1/350, Secondary antibody: Goat anti rabbit IgG at 1/8000 dilution, Exposure time: 5 seconds



### Immunohistochemistry

**Image 3.** The image on the left is immunohistochemistry of paraffin-embedded Human esophagus cancer tissue using ABIN7128194(CTL8 Antibody) at dilution 1/15, on the right is treated with fusion protein. (Original magnification: x200)