

Datasheet for ABIN7128206
anti-ACTRT1 antibody



[Go to Product page](#)

1 Image

Overview

Quantity:	100 µL
Target:	ACTRT1
Reactivity:	Human
Host:	Rabbit
Clonality:	Polyclonal
Conjugate:	This ACTRT1 antibody is un-conjugated
Application:	ELISA, Western Blotting (WB)

Product Details

Immunogen:	Fusion protein of Human ACTRT1
Isotype:	IgG
Cross-Reactivity:	Human
Purification:	Antigen affinity purification

Target Details

Target:	ACTRT1
Alternative Name:	ACTRT1 (ACTRT1 Products)
Background:	Background: This gene encodes a protein related to the cytoskeletal protein beta-actin. This protein is a major component of the calyx in the perinuclear theca of mammalian sperm heads, and it therefore likely functions in spermatid formation. This gene is intronless and is similar to a related gene located on chromosome 1. A related pseudogene has also been identified

Target Details

approximately 75 kb downstream of this gene on chromosome X.
Aliases: ACTRT1 antibody, ARPT1 antibody, HSD27Actin-related protein T1 antibody, ARP-T1 antibody

UniProt: [Q8TDG2](#)

Application Details

Application Notes: ELISA:1:1000-1:2000, WB:1:200-1:1000,

Restrictions: For Research Use only

Handling

Format: Liquid

Buffer: -20 °C, pH 7.4 PBS, 0.05 % Sodium azide, 40 % Glycerol

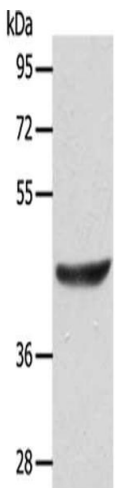
Preservative: Sodium azide

Precaution of Use: This product contains Sodium azide: a POISONOUS AND HAZARDOUS SUBSTANCE which should be handled by trained staff only.

Storage: -20 °C,-80 °C

Storage Comment: Upon receipt, store at -20°C or -80°C. Avoid repeated freeze.

Images



Western Blotting

Image 1. Gel: 10 % SDS-PAGE, Lysate: 40 µg, Lane: Jurkat cells, Primary antibody: ABIN7128206(ACTRT1 Antibody) at dilution 1/125, Secondary antibody: Goat anti rabbit IgG at 1/8000 dilution, Exposure time: 10 seconds