

Datasheet for ABIN7128229

anti-ADAM2 antibody

3 Images

[Go to Product page](#)

Overview

Quantity:	100 µL
Target:	ADAM2
Reactivity:	Human
Host:	Rabbit
Clonality:	Polyclonal
Conjugate:	This ADAM2 antibody is un-conjugated
Application:	Western Blotting (WB), ELISA, Immunohistochemistry (IHC)

Product Details

Immunogen:	Fusion protein of Human ADAM2
Isotype:	IgG
Cross-Reactivity:	Human
Purification:	Antigen affinity purification

Target Details

Target:	ADAM2
Alternative Name:	ADAM2 (ADAM2 Products)
Background:	Background: This gene encodes a member of the ADAM (a disintegrin and metalloprotease domain) family. Members of this family are membrane-anchored proteins structurally related to snake venom disintegrins, and have been implicated in a variety of biological processes involving cell-cell and cell-matrix interactions, including fertilization, muscle development, and

Target Details

neurogenesis. This member is a subunit of an integral sperm membrane glycoprotein called fertilin, which plays an important role in sperm-egg interactions.

Aliases: A disintegrin and metalloproteinase domain 2 antibody, ADAM 2 antibody, ADAM metallopeptidase domain 2 antibody, Adam2 antibody, ADAM2_HUMAN antibody, AI323749 antibody, Cancer/testis antigen 15 antibody, CRYN1 antibody, CRYN2 antibody, CT15 antibody, Disintegrin and metalloproteinase domain-containing protein 2 antibody, Fertilin beta antibody, Fertilin subunit beta antibody, Ftnb antibody, PH 30 antibody, PH 30b antibody, PH-30 antibody, PH30 antibody, Ph30 beta antibody, PH30-beta antibody

UniProt: [Q99965](#)

Application Details

Application Notes: ELISA:1:1000-1:2000, WB:1:200-1:1000, IHC:1:25-1:100,

Restrictions: For Research Use only

Handling

Format: Liquid

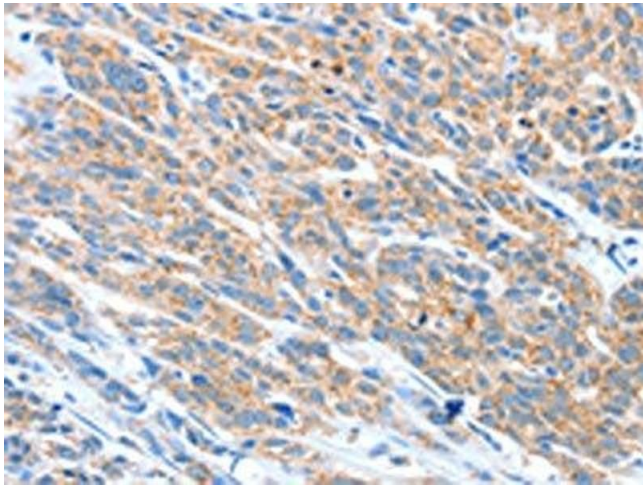
Buffer: -20 °C, pH 7.4 PBS, 0.05 % Sodium azide, 40 % Glycerol

Preservative: Sodium azide

Precaution of Use: This product contains Sodium azide: a POISONOUS AND HAZARDOUS SUBSTANCE which should be handled by trained staff only.

Storage: -20 °C, -80 °C

Storage Comment: Upon receipt, store at -20°C or -80°C. Avoid repeated freeze.



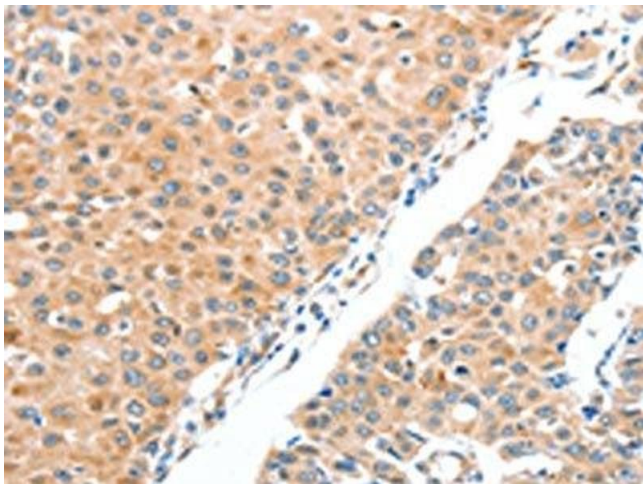
Immunohistochemistry

Image 1. The image on the left is immunohistochemistry of paraffin-embedded Human esophagus cancer tissue using ABIN7128229(ADAM2 Antibody) at dilution 1/20, on the right is treated with fusion protein. (Original magnification: x200)



Western Blotting

Image 2. Gel: 8 % SDS-PAGE, Lysate: 40 µg, Lane 1-2: 293T cells, hela cells, Primary antibody: ABIN7128229(ADAM2 Antibody) at dilution 1/300, Secondary antibody: Goat anti rabbit IgG at 1/8000 dilution, Exposure time: 15 seconds



Immunohistochemistry

Image 3. The image on the left is immunohistochemistry of paraffin-embedded Human breast cancer tissue using ABIN7128229(ADAM2 Antibody) at dilution 1/20, on the right is treated with fusion protein. (Original magnification: x200)