

Datasheet for ABIN7128233

anti-ADAM21 antibody**2** Images[Go to Product page](#)

Overview

Quantity:	100 µL
Target:	ADAM21
Reactivity:	Human
Host:	Rabbit
Clonality:	Polyclonal
Conjugate:	This ADAM21 antibody is un-conjugated
Application:	ELISA, Immunohistochemistry (IHC)

Product Details

Immunogen:	Fusion protein of Human ADAM21
Isotype:	IgG
Cross-Reactivity:	Human
Purification:	Antigen affinity purification

Target Details

Target:	ADAM21
Alternative Name:	ADAM21 (ADAM21 Products)
Background:	Background: This gene encodes a member of the ADAM (a disintegrin and metalloprotease domain) family. Members of this family are membrane-anchored proteins structurally related to snake venom disintegrins, and have been implicated in a variety of biological processes involving cell-cell and cell-matrix interactions, including fertilization, muscle development, and

Target Details

neurogenesis. The expression of this gene expression is testis-specific.

Aliases: ADAM21Disintegrin and metalloproteinase domain-containing protein 21 antibody, ADAM 21 antibody, EC 3.4.24.- antibody

UniProt: [Q9UKJ8](#)

Application Details

Application Notes: ELISA:1:1000-1:2000, IHC:1:15-1:50,

Restrictions: For Research Use only

Handling

Format: Liquid

Buffer: -20 °C, pH 7.4 PBS, 0.05 % Sodium azide, 40 % Glycerol

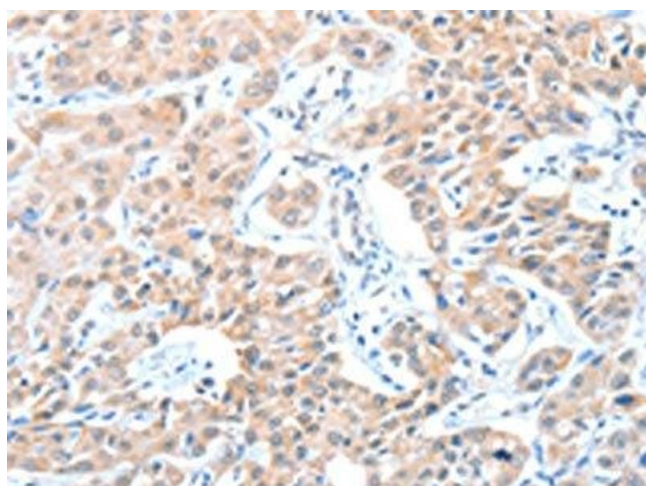
Preservative: Sodium azide

Precaution of Use: This product contains Sodium azide: a POISONOUS AND HAZARDOUS SUBSTANCE which should be handled by trained staff only.

Storage: -20 °C,-80 °C

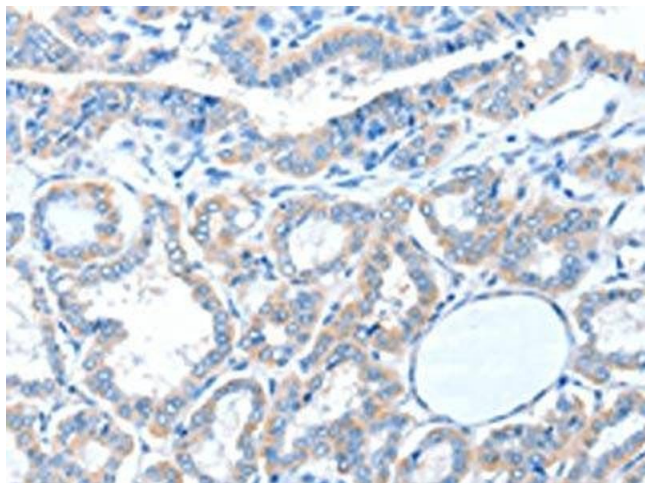
Storage Comment: Upon receipt, store at -20°C or -80°C. Avoid repeated freeze.

Images



Immunohistochemistry

Image 1. The image on the left is immunohistochemistry of paraffin-embedded Human lung cancer tissue using ABIN7128233(ADAM21 Antibody) at dilution 1/15, on the right is treated with fusion protein. (Original magnification: x200)



Immunohistochemistry

Image 2. The image on the left is immunohistochemistry of paraffin-embedded Human thyroid cancer tissue using ABIN7128233(ADAM21 Antibody) at dilution 1/15, on the right is treated with fusion protein. (Original magnification: x200)