

Datasheet for ABIN7128234 **anti-ADAM32 antibody**



[Go to Product page](#)

3 Images

Overview

Quantity:	100 µL
Target:	ADAM32
Reactivity:	Human
Host:	Rabbit
Clonality:	Polyclonal
Conjugate:	This ADAM32 antibody is un-conjugated
Application:	Western Blotting (WB), ELISA, Immunohistochemistry (IHC)

Product Details

Immunogen:	Fusion protein of Human ADAM32
Isotype:	IgG
Cross-Reactivity:	Human
Purification:	Antigen affinity purification

Target Details

Target:	ADAM32
Alternative Name:	ADAM32 (ADAM32 Products)
Background:	Background: A number of a disintegrin and metalloprotease (ADAM) family members are expressed in mammalian male reproductive organs such as testis and epididymis. The cDNA sequence of ADAM32 has an open reading frame which encodes 750 (mouse ADAM32) and 787 (human ADAM32) amino acids, sharing 69 % homology between the two species.

Target Details

Comparison of amino acid sequences showed that ADAM32 is highly homologous to ADAM2 and ADAM3, sperm surface proteins required for fertilization. We found that the ADAM32 gene is expressed predominantly in the testis.

Aliases: ADAM32 antibody, UNQ5982/PRO21340 antibody, Disintegrin and metalloproteinase domain-containing protein 32 antibody, ADAM 32 antibody

UniProt: [Q8TC27](#)

Application Details

Application Notes: ELISA:1:1000-1:2000, WB:1:200-1:1000, IHC:1:15-1:50,

Restrictions: For Research Use only

Handling

Format: Liquid

Buffer: -20 °C, pH 7.4 PBS, 0.05 % Sodium azide, 40 % Glycerol

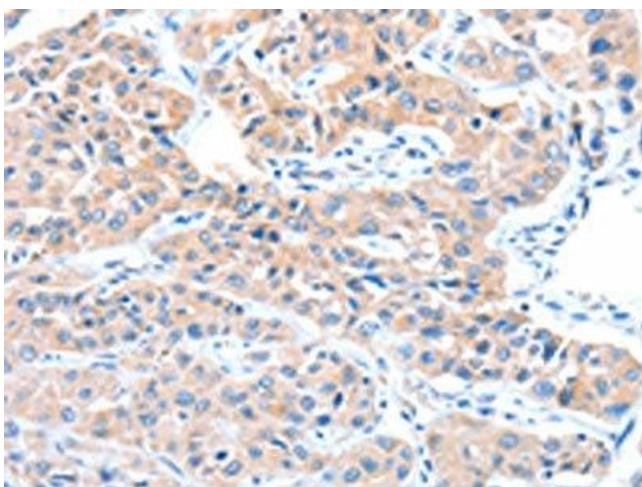
Preservative: Sodium azide

Precaution of Use: This product contains Sodium azide: a POISONOUS AND HAZARDOUS SUBSTANCE which should be handled by trained staff only.

Storage: -20 °C,-80 °C

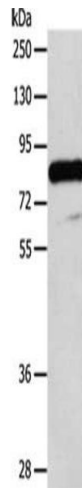
Storage Comment: Upon receipt, store at -20°C or -80°C. Avoid repeated freeze.

Images



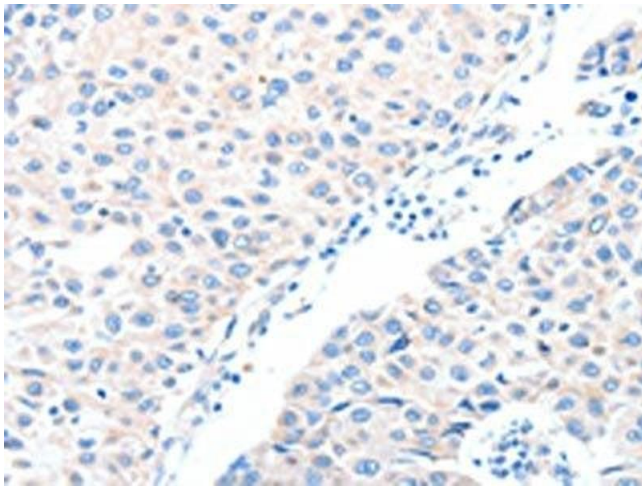
Immunohistochemistry

Image 1. The image on the left is immunohistochemistry of paraffin-embedded Human lung cancer tissue using ABIN7128234(ADAM32 Antibody) at dilution 1/15, on the right is treated with fusion protein. (Original magnification: x200)



Western Blotting

Image 2. Gel: 8 % SDS-PAGE, Lysate: 40 µg, Lane: Human testis tissue, Primary antibody: ABIN7128234(ADAM32 Antibody) at dilution 1/100, Secondary antibody: Goat anti rabbit IgG at 1/8000 dilution, Exposure time: 10 minutes



Immunohistochemistry

Image 3. The image on the left is immunohistochemistry of paraffin-embedded Human breast cancer tissue using ABIN7128234(ADAM32 Antibody) at dilution 1/15, on the right is treated with fusion protein. (Original magnification: x200)